



UK Office

Everest Biotech Ltd

Cherwell Innovation Centre
77 Heyford Park
Upper Heyford
Oxfordshire
OX25 5HD
UK

Enquiries:

info@everestbiotech.com

Sales:

sales@everestbiotech.com

Tech support:

support@everestbiotech.com

Tel: +44 (0)1869 238326

www.everestbiotech.com

**Research Use Only. Not for
diagnostic or therapeutic use.**

EB11984 - Goat Anti-sialin / SLC17A5 (aa85-99) Antibody

Size: 100µg specific antibody in 200µl



Target Protein

Principal Names: SLC17A5, solute carrier family 17 (anion/sugar transporter), member 5, AST, ISSD, NSD, SD, SIALIN, SIASD, SLD, membrane glycoprotein HP59, sialic acid storage disease, sialin, sodium/sialic acid cotransporter, solute carrier family 17 member 5, solute carrier family 17, member 5

Official Symbol: SLC17A5

Accession Number(s): NP_036566.1

Human GeneID(s): [26503](#)

Immunogen

Peptide with sequence C-EHSAPIKVHHNQTGK, from the internal region of the protein sequence according to NP_036566.1.

Please note the [peptide](#) is available for sale.

Purification and Storage

Purified from goat serum by ammonium sulphate precipitation followed by antigen affinity chromatography using the immunizing peptide.

Supplied at 0.5 mg/ml in Tris saline, 0.02% sodium azide, pH7.3 with 0.5% bovine serum albumin.

Aliquot and store at -20°C. Minimize freezing and thawing.

Applications Tested

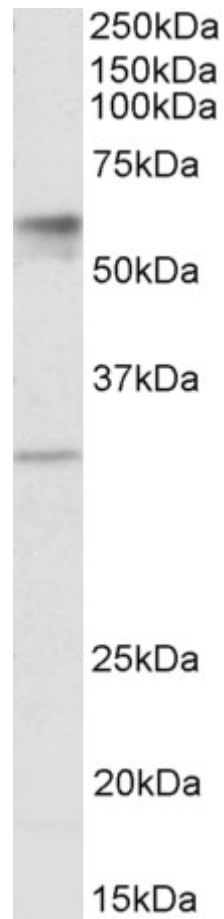
Peptide ELISA: antibody detection limit dilution 1:128000.

Western blot: Approx 55-60kDa band observed in Human Placenta lysates (calculated MW of 54.6kDa according to NP_036566.1). The observed 30kDa is in agreement of isoform 2 reported by UniprotKB (Q9NRA2). Recommended concentration: 1-3µg/ml.

Species Reactivity

Tested: Human

Expected from sequence similarity: Human



EB11984 (1 μ g/ml) staining of Human Placenta lysate (35 μ g protein in RIPA buffer). Primary incubation was 1 hour. Detected by chemiluminescence.