

UK Office

Everest Biotech Ltd

Cherwell Innovation Centre
77 Heyford Park
Upper Heyford
Oxfordshire
OX25 5HD
UK

Enquiries:

info@everestbiotech.com

Sales:

sales@everestbiotech.com

Tech support:

support@everestbiotech.com

Tel: +44 (0)1869 238326

www.everestbiotech.com

**Research Use Only. Not for
diagnostic or therapeutic use.**

EB10233 - Goat Anti-SIGLEC6 Antibody

Size: 100µg specific antibody in 200µl



Target Protein

Principal Names: CD327, CD33 antigen-like 1, CD33L, CD33L1, CDw327, CDw327 antigen, OBBP1, Obesity-binding protein 1, sialic acid binding Ig-like lectin 6, SIGLEC-6, SIGLEC6

Official Symbol: SIGLEC6

Accession Number(s): NP_001236.4; NP_942142.3; NP_942143.3

Human GeneID(s): [946](#)

Important Comments: This antibody is expected to recognize all reported isoforms (NP_001236.4; NP_942142.3; NP_942143.3).

Immunogen

Peptide with sequence C-KWMKYGYTSSK, from the internal region of the protein sequence according to NP_001236.4; NP_942142.3; NP_942143.3.

Please note the [peptide](#) is available for sale.

Purification and Storage

Purified from goat serum by ammonium sulphate precipitation followed by antigen affinity chromatography using the immunizing peptide.

Supplied at 0.5 mg/ml in Tris saline, 0.02% sodium azide, pH7.3 with 0.5% bovine serum albumin.

Aliquot and store at -20°C. Minimize freezing and thawing.

Applications Tested

Peptide ELISA: antibody detection limit dilution 1:16000.

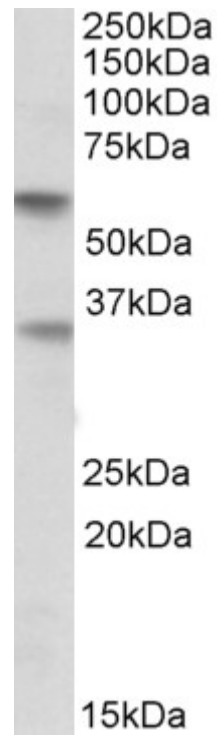
Western blot: Experiments gave bands at approx 60kDa and 35kDa in Human Placenta lysates. These bands correspond to earlier findings with different antibodies from other sources. This protein has a calculated MW of 49.9kDa according to NP_001236.4.

Recommended concentration: 0.5-1.5µg/ml.

Species Reactivity

Tested: Human

Expected from sequence similarity: Human



EB10233 (0.5 μ g/ml) staining of Human Placenta lysate (35 μ g protein in RIPA buffer). Primary incubation was 1 hour. Detected by chemiluminescence.