



UK Office

Everest Biotech Ltd

Cherwell Innovation Centre
77 Heyford Park
Upper Heyford
Oxfordshire
OX25 5HD
UK

Enquiries:

info@everestbiotech.com

Sales:

sales@everestbiotech.com

Tech support:

support@everestbiotech.com

Tel: +44 (0)1869 238326

www.everestbiotech.com

**Research Use Only. Not for
diagnostic or therapeutic use.**

EB09019 - Goat Anti-SIGLEC8 Antibody

Size: 100µg specific antibody in 200µl



Target Protein

Principal Names: SIGLEC8, sialic acid binding Ig-like lectin 8, MGC59785, SAF2, SIGLEC-8, SIGLEC8L

Official Symbol: SIGLEC8

Accession Number(s): NP_055257.2

Human GeneID(s): [27181](#)

Immunogen

Peptide with sequence C-SYKSQLNYKTKQ, from the internal region of the protein sequence according to NP_055257.2.

Please note the [peptide](#) is available for sale.

Purification and Storage

Purified from goat serum by ammonium sulphate precipitation followed by antigen affinity chromatography using the immunizing peptide.

Supplied at 0.5 mg/ml in Tris saline, 0.02% sodium azide, pH7.3 with 0.5% bovine serum albumin.

Aliquot and store at -20°C. Minimize freezing and thawing.

Applications Tested

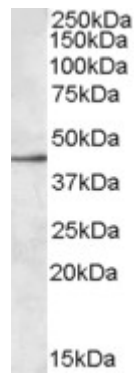
Peptide ELISA: antibody detection limit dilution 1:32000.

Western blot: Approx. 45kDa band observed in lysates of cell line MOLT4 (calculated MW of 54.0kDa according to NP_055257.2). The observed molecular weight corresponds to earlier findings in literature with different antibodies (Nutku et al, Blood. 2003 Jun 15;101(12):5014-20.; PMID: 12609831). Recommended concentration: 0.3-1µg/ml.

Species Reactivity

Tested: Human

Expected from sequence similarity: Human



EB09019 (0.3 μ g/ml) staining of MOLT4 lysate (35 μ g protein in RIPA buffer). Primary incubation was 1 hour.
Detected by chemiluminescence.