

## UK Office

### Everest Biotech Ltd

Cherwell Innovation Centre  
77 Heyford Park  
Upper Heyford  
Oxfordshire  
OX25 5HD  
UK

Enquiries:

[info@everestbiotech.com](mailto:info@everestbiotech.com)

Sales:

[sales@everestbiotech.com](mailto:sales@everestbiotech.com)

Tech support:

[support@everestbiotech.com](mailto:support@everestbiotech.com)

Tel: +44 (0)1869 238326

[www.everestbiotech.com](http://www.everestbiotech.com)

**Research Use Only. Not for  
diagnostic or therapeutic use.**

## EB07296 - Goat Anti-Silver homologue / Pmel 17 (C-terminus) Antibody

Size: 100µg specific antibody in 200µl



### Target Protein

**Principal Names:** silver homologue (mouse), PMEL17, SILV, D12S53E, ME20, SI, SIL, gp100, Melanocyte protein mel 17, Pmel 17, Silver, mouse, homolog of, silver (mouse homologue) like, silver (mouse homologue)-like, silver homologue

**Official Symbol:** PMEL

**Accession Number(s):** NP\_008859.1

**Human GeneID(s):** [6490](#)

**Non-Human GeneID(s):** 20431 (mouse), 362818 (rat)

### Immunogen

Peptide with sequence CPIGENSPLLSGQQ, from the C Terminus of the protein sequence according to NP\_008859.1.

Please note the [peptide](#) is available for sale.

### Purification and Storage

Purified from goat serum by ammonium sulphate precipitation followed by antigen affinity chromatography using the immunizing peptide.

Supplied at 0.5 mg/ml in Tris saline, 0.02% sodium azide, pH7.3 with 0.5% bovine serum albumin.

Aliquot and store at -20°C. Minimize freezing and thawing.

### Applications Tested

**Peptide ELISA:** antibody detection limit dilution 1:32000.

**IHC:** Paraffin embedded Human Melanoma. Recommended concentration: 6-7µg/ml.

### Species Reactivity

**Tested:** Human

**Expected from sequence similarity:** Human, Mouse

### Specific Reference

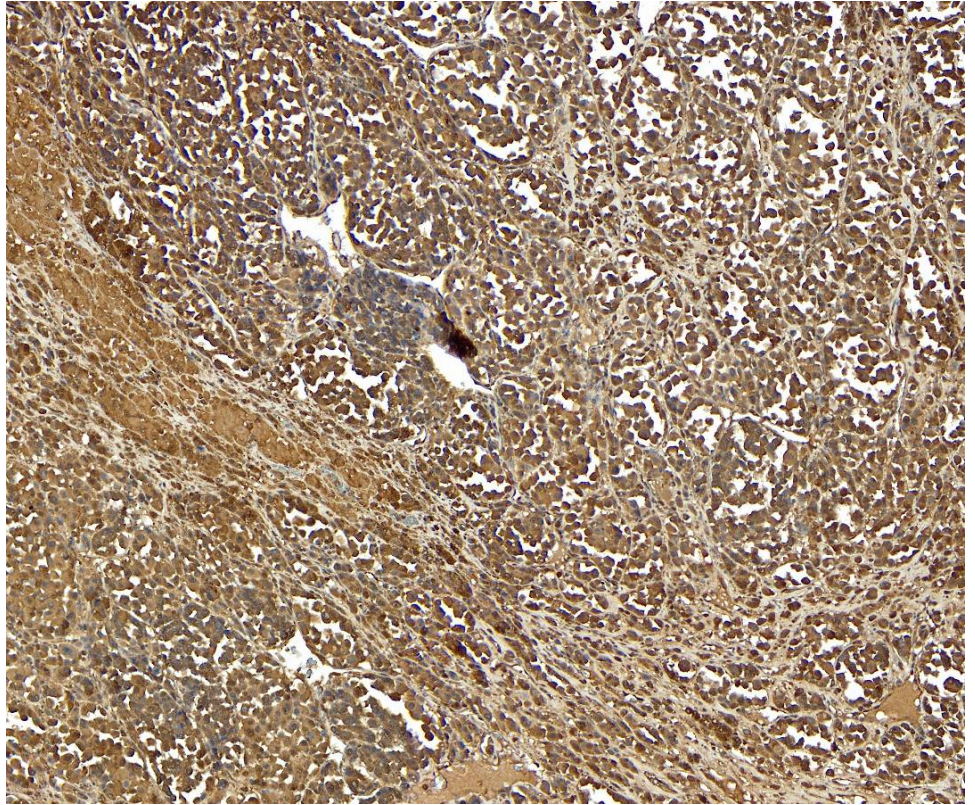
**This antibody (previous batch) has been successfully used in Western blot on Zebrafish:**

Liu C, Yan W, Zhou B, Guo Y, Liu H, Yu H, Giesy JP, Wang J, Li G, Zhang X.

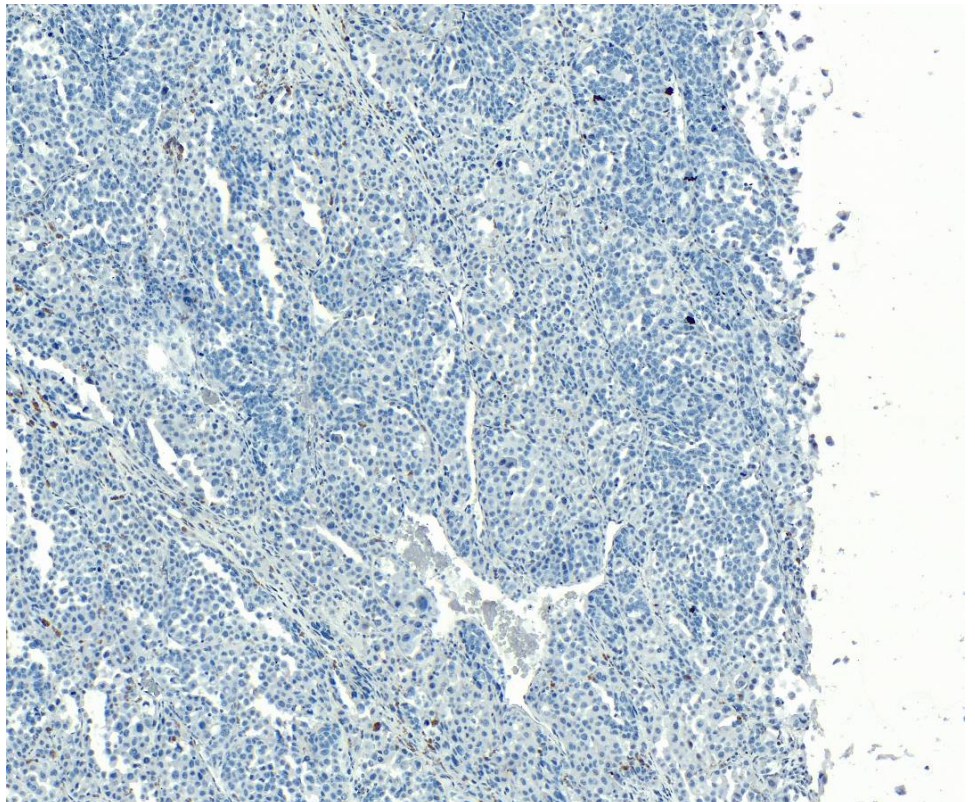
Characterization of a bystander effect induced by the endocrine-disrupting chemical 6-propyl-2-thiouracil in zebrafish embryos.

Aquat Toxicol. 2012 Aug 15;118-119:108-15.

PMID: 22542736



EB07296 (7 $\mu$ g/ml) staining of paraffin embedded Human Melanoma. Heat induced antigen retrieval with citrate buffer pH 6, HRP-staining.



EB07296 Negative Control showing staining of paraffin embedded Human Melanoma, with no primary antibody.