



UK Office

Everest Biotech Ltd

Cherwell Innovation Centre
77 Heyford Park
Upper Heyford
Oxfordshire
OX25 5HD
UK

Enquiries:

info@everestbiotech.com

Sales:

sales@everestbiotech.com

Tech support:

support@everestbiotech.com

Tel: +44 (0)1869 238326

Fax: +44 (0)1869 238327

US Office

Everest Biotech c/o Abcore

405 Maple Street, Suite A106
Ramona,
CA 92065
USA

Inquiries:

info@everestbiotech.com

Sales:

usasales@everestbiotech.com

Tech support:

support@everestbiotech.com

Tel: 888-320-4628 (toll-free)

Fax: 888-841-9041

www.everestbiotech.com

**Research Use Only. Not for
diagnostic or therapeutic use.**

EB10826 - Goat Anti-Sirtuin 1 / SIRT1 (aa577-590) Antibody

Size: 100µg specific antibody in 200µl



Target Protein

Principal Names: SIRT1, sirtuin 1, SIR2L1, NAD-dependent deacetylase sirtuin-1, OTTHUMP00000198111, OTTHUMP00000198112, SIR2-like protein 1, SIR2alpha, hSIR2, sir2-like 1, sirtuin type 1

Official Symbol: SIRT1

Accession Number(s): NP_036370.2; NP_001135970.1

Human GeneID(s): [23411](#)

Non-Human GeneID(s): 93759 (mouse)

Important Comments: This antibody is expected to recognize both reported isoforms (NP_036370.2; NP_001135970.1).

Immunogen

Peptide with sequence C-EKPQEVQTSRNVES, from the internal region of the protein sequence according to NP_036370.2; NP_001135970.1.

Please note the [peptide](#) is available for sale.

Purification and Storage

Purified from goat serum by ammonium sulphate precipitation followed by antigen affinity chromatography using the immunizing peptide.

Supplied at 0.5 mg/ml in Tris saline, 0.02% sodium azide, pH7.3 with 0.5% bovine serum albumin.

Aliquot and store at -20°C. Minimize freezing and thawing.

Applications Tested

Peptide ELISA: antibody detection limit dilution 1:64000.

Western blot: Approx 120kDa band observed in lysates of cell line Jurkat (calculated MW of 81.7kDa according to NP_036370.2). The observed molecular weight corresponds to earlier findings in literature with different antibodies (Cheng et al, Proc Natl Acad Sci U S A. 2003 Sep 16;100(19):10794-9.; PMID: 12960381). Recommended concentration: 0.05-0.2µg/ml.

IHC: In paraffin embedded Human Skin shows perinuclear staining in select keratinocytes. Recommended concentration, 3-5µg/ml.

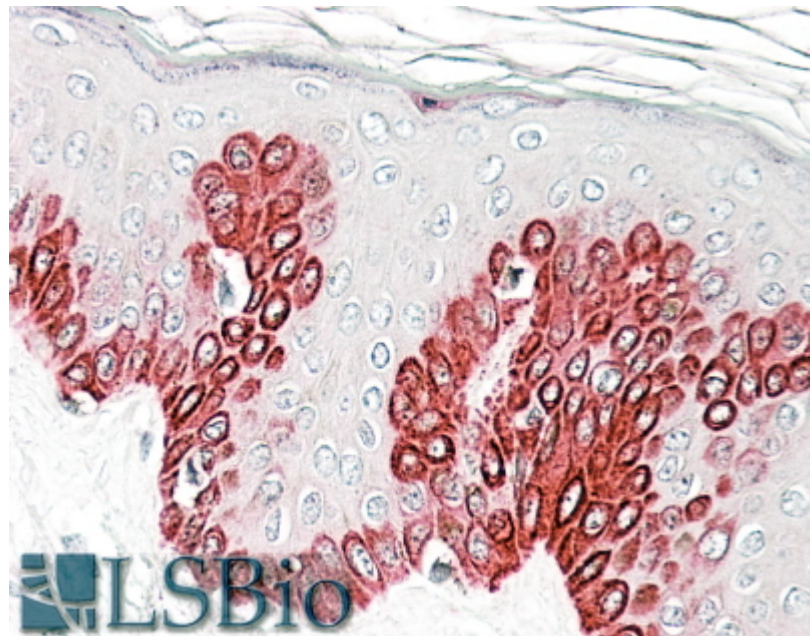
Species Reactivity

Tested: Human

Expected from sequence similarity: Human, Mouse



EB10826 (0.05µg/ml) staining of Jurkat lysate (35µg protein in RIPA buffer). Primary incubation was 1 hour.
Detected by chemiluminescence.



EB10826 (3.8µg/ml) staining of paraffin embedded Human Skin. Steamed antigen retrieval with citrate buffer pH 6, AP-staining.