



## UK Office

### Everest Biotech Ltd

Cherwell Innovation Centre  
77 Heyford Park  
Upper Heyford  
Oxfordshire  
OX25 5HD  
UK

Enquiries:

[info@everestbiotech.com](mailto:info@everestbiotech.com)

Sales:

[sales@everestbiotech.com](mailto:sales@everestbiotech.com)

Tech support:

[support@everestbiotech.com](mailto:support@everestbiotech.com)

Tel: +44 (0)1869 238326

Fax: +44 (0)1869 238327

## US Office

### Everest Biotech c/o Abcore

405 Maple Street, Suite A106  
Ramona,  
CA 92065  
USA

Inquiries:

[info@everestbiotech.com](mailto:info@everestbiotech.com)

Sales:

[usasales@everestbiotech.com](mailto:usasales@everestbiotech.com)

Tech support:

[support@everestbiotech.com](mailto:support@everestbiotech.com)

Tel: 888-320-4628 (toll-free)

Fax: 888-841-9041

[www.everestbiotech.com](http://www.everestbiotech.com)

**Research Use Only. Not for  
diagnostic or therapeutic use.**

## EB10495 - Goat Anti-SLAMF8 Antibody

Size: 100µg specific antibody in 200µl



### Target Protein

**Principal Names:** B lymphocyte activator macrophage expressed, BCM-like membrane protein, BLAME, FLJ20442, MGC129578, SBBI42, SLAM family member 8, SLAMF8

**Official Symbol:** SLAMF8

**Accession Number(s):** NP\_064510.1

**Human GeneID(s):** [56833](#)

**Non-Human GeneID(s):** 74748 (mouse), 289237 (rat)

### Immunogen

Peptide with sequence C-TLYHSRFLGRAQ, from the internal region of the protein sequence according to NP\_064510.1.

Please note the [peptide](#) is available for sale.

### Purification and Storage

Purified from goat serum by ammonium sulphate precipitation followed by antigen affinity chromatography using the immunizing peptide.

Supplied at 0.5 mg/ml in Tris saline, 0.02% sodium azide, pH7.3 with 0.5% bovine serum albumin.

Aliquot and store at -20°C. Minimize freezing and thawing.

### Applications Tested

**Peptide ELISA:** antibody detection limit dilution 1:8000.

**Western blot:** In transfected HEK293 transiently expressing Human SLAMF8 (myc and DYKDDDDK tagged), a band of approx. 45kDa is observed. No bands are observed in mock-transfected HEK293 and the same band is observed using anti-myc antibody.

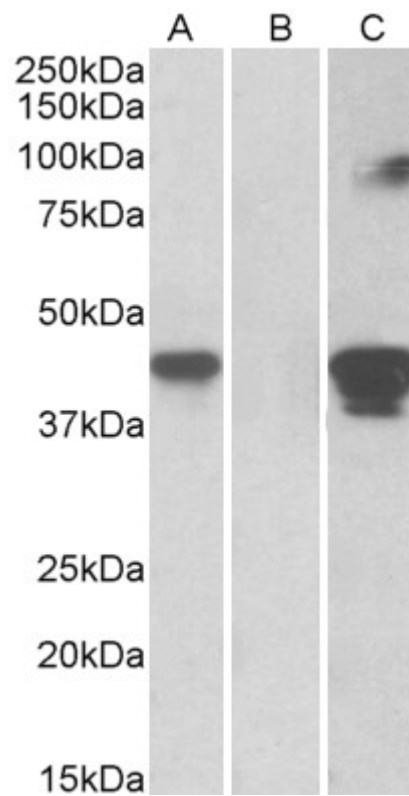
Recommended concentration: 0.5-1µg/ml.

**IHC:** Paraffin embedded Human Small Intestine. Recommended concentration: 5µg/ml.

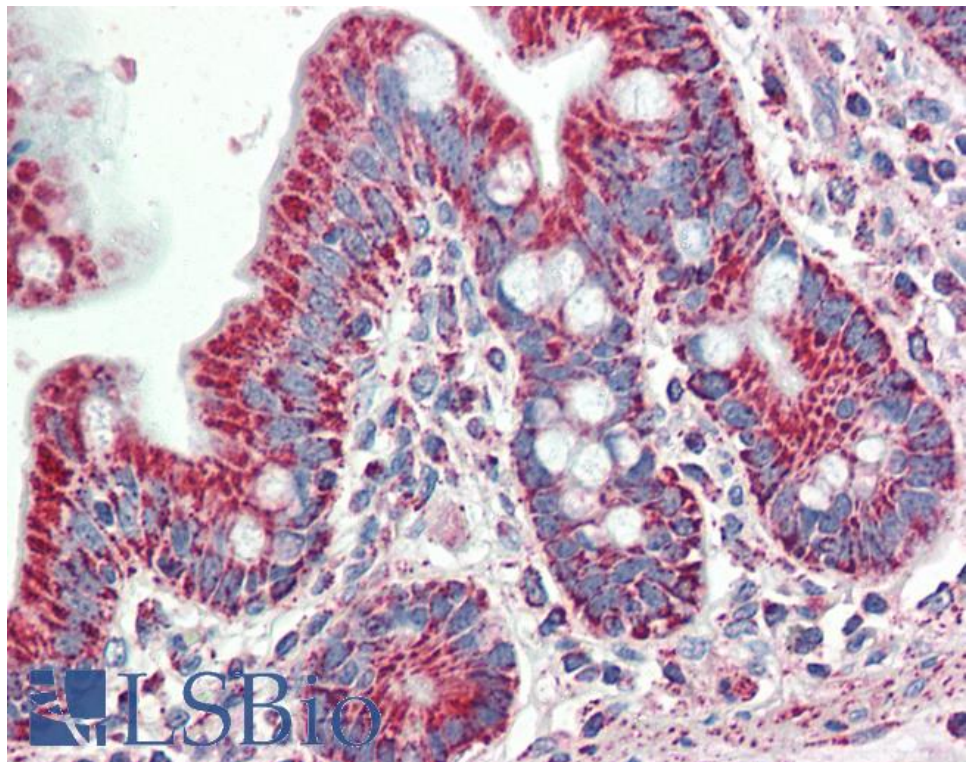
### Species Reactivity

**Tested:** Human

**Expected from sequence similarity:** Human, Mouse, Rat, Cow



HEK293 lysate (10ug protein in RIPA buffer) overexpressing Human SLAMF8 with C-terminal MYC tag probed with EB10495 (1ug/ml) in Lane A and probed with anti-MYC Tag (1/1000) in lane C. Mock-transfected HEK293 probed with EB10495 (1ug/ml) in Lane B. Primary incubations were for 1 hour. Detected by chemiluminescence.



EB10495 (5µg/ml) staining of paraffin embedded Human Small Intestine. Steamed antigen retrieval with citrate buffer pH 6, AP-staining.