



UK Office

Everest Biotech Ltd

Cherwell Innovation Centre
77 Heyford Park
Upper Heyford
Oxfordshire
OX25 5HD
UK

Enquiries:

info@everestbiotech.com

Sales:

sales@everestbiotech.com

Tech support:

support@everestbiotech.com

Tel: +44 (0)1869 238326

Fax: +44 (0)1869 238327

US Office

Everest Biotech c/o Abcore

405 Maple Street, Suite A106
Ramona,
CA 92065
USA

Inquiries:

info@everestbiotech.com

Sales:

usasales@everestbiotech.com

Tech support:

support@everestbiotech.com

Tel: 888-320-4628 (toll-free)

Fax: 888-841-9041

www.everestbiotech.com

**Research Use Only. Not for
diagnostic or therapeutic use.**

EB09783 - Goat Anti-SLC12A2 Antibody

Size: 100µg specific antibody in 200µl



Target Protein

Principal Names: basolateral Na-K-Cl symporter, BSC, BSC2, bumetanide-sensitive sodium-(potassium)-chloride cotransporter 1, MGC104233, NKCC1, solute carrier family 12 (sodium/potassium/chloride transporters), member 2, SLC12A2

Official Symbol: SLC12A2

Accession Number(s): NP_001037.1; NP_001243390.1

Human GeneID(s): [6558](#)

Non-Human GeneID(s): 20496 (mouse), 83629 (rat)

Immunogen

Peptide with sequence C-NALQHSIRLSGVEDH, from the internal region of the protein sequence according to NP_001037.1; NP_001243390.1.

Please note the [peptide](#) is available for sale.

Purification and Storage

Purified from goat serum by ammonium sulphate precipitation followed by antigen affinity chromatography using the immunizing peptide.

Supplied at 0.5 mg/ml in Tris saline, 0.02% sodium azide, pH7.3 with 0.5% bovine serum albumin.

Aliquot and store at -20°C. Minimize freezing and thawing.

Applications Tested

Peptide ELISA: antibody detection limit dilution 1:64000.

IHC: In paraffin embedded Human Colon shows membranous staining. Recommended concentration: 3.75µg/ml.

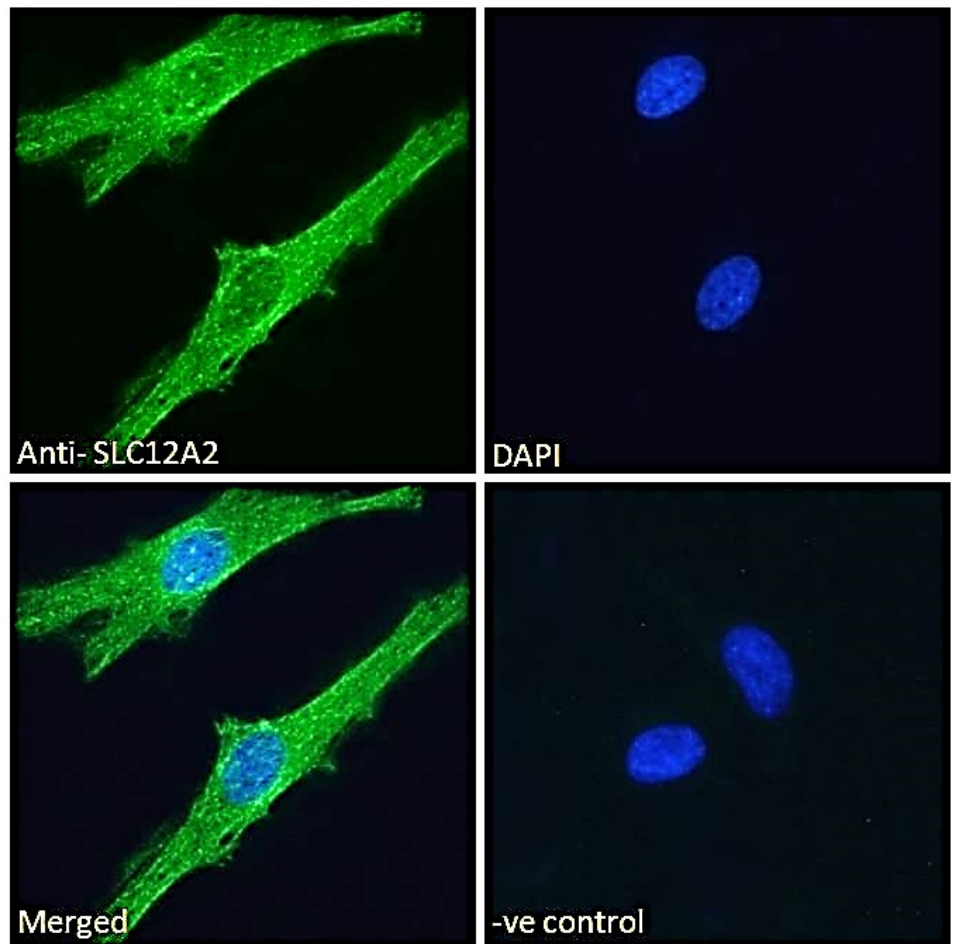
Immunofluorescence: Strong expression of the protein seen in the cytoplasm/ vesicles of HeLa cells. Recommended concentration: 10µg/ml.

Flow Cytometry: Flow cytometric analysis of HeLa cells. Recommended concentration: 10ug/ml.

Species Reactivity

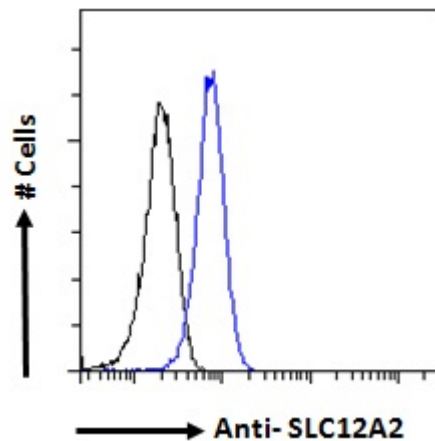
Tested: Human

Expected from sequence similarity: Human, Mouse, Rat, Dog, Cow

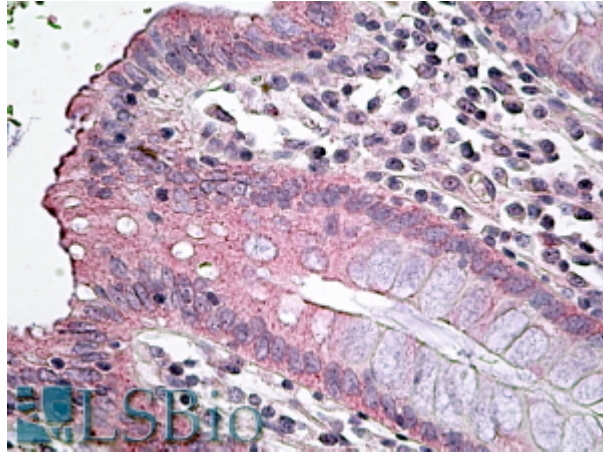


EB09783 Immunofluorescence analysis of paraformaldehyde fixed HeLa cells, permeabilized with 0.15% Triton.

Primary incubation 1hr (10ug/ml) followed by Alexa Fluor 488 secondary antibody (2ug/ml), showing cytoplasmic/vesicle and membrane staining. The nuclear stain is DAPI (blue). Negative control: Unimmunized goat IgG (10ug/ml) followed by Alexa Fluor 488 secondary antibody (2ug/ml).



EB09783 Flow cytometric analysis of paraformaldehyde fixed HeLa cells (blue line), permeabilized with 0.5% Triton. Primary incubation 1hr (10ug/ml) followed by Alexa Fluor 488 secondary antibody (1ug/ml). IgG control: Unimmunized goat IgG (black line) followed by Alexa Fluor 488 secondary antibody.



EB09783 (3.75µg/ml) staining of paraffin embedded Human Colon. Steamed antigen retrieval with citrate buffer Ph 6, AP-staining.