



UK Office

Everest Biotech Ltd

Cherwell Innovation Centre
77 Heyford Park
Upper Heyford
Oxfordshire
OX25 5HD
UK

Enquiries:

info@everestbiotech.com

Sales:

sales@everestbiotech.com

Tech support:

support@everestbiotech.com

Tel: +44 (0)1869 238326

Fax: +44 (0)1869 238327

US Office

Everest Biotech c/o Abcore

405 Maple Street, Suite A106
Ramona,
CA 92065
USA

Inquiries:

info@everestbiotech.com

Sales:

usasales@everestbiotech.com

Tech support:

support@everestbiotech.com

Tel: 888-320-4628 (toll-free)

Fax: 888-841-9041

www.everestbiotech.com

**Research Use Only. Not for
diagnostic or therapeutic use.**

EB05131 - Goat Anti-SLC16A7 / MCT2 Antibody

Size: 100µg specific antibody in 200µl



Target Protein

Principal Names: SLC16A7, solute carrier family 16 (monocarboxylic acid transporters), member 7, MCT2, monocarboxylate transporter 2, solute carrier family 16, member 7 (monocarboxylic acid transporter 2), solute carrier family 16, member 7

Official Symbol: SLC16A7

Accession Number(s): NP_004722.2

Human GeneID(s): [9194](#)

Immunogen

Peptide with sequence C-SNAQSVTSERETNI, from the C Terminus of the protein sequence according to NP_004722.2.

Please note the [peptide](#) is available for sale.

Purification and Storage

Purified from goat serum by ammonium sulphate precipitation followed by antigen affinity chromatography using the immunizing peptide.

Supplied at 0.5 mg/ml in Tris saline, 0.02% sodium azide, pH7.3 with 0.5% bovine serum albumin.

Aliquot and store at -20°C. Minimize freezing and thawing.

Applications Tested

Peptide ELISA: antibody detection limit dilution 1:128000.

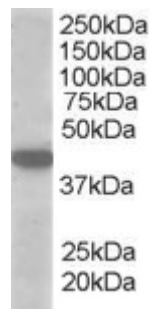
Western blot: Approx 40-45kDa band observed in A549, lung epithelial (lung carcinoma) lysates (calculated MW of 52.2 kDa according to NP_004722). This molecular weight is routinely observed by other sources. Recommended concentration: 1-3µg/ml.

IHC: Paraffin embedded Human Testis. Recommended concentration: 2.5µg/ml.

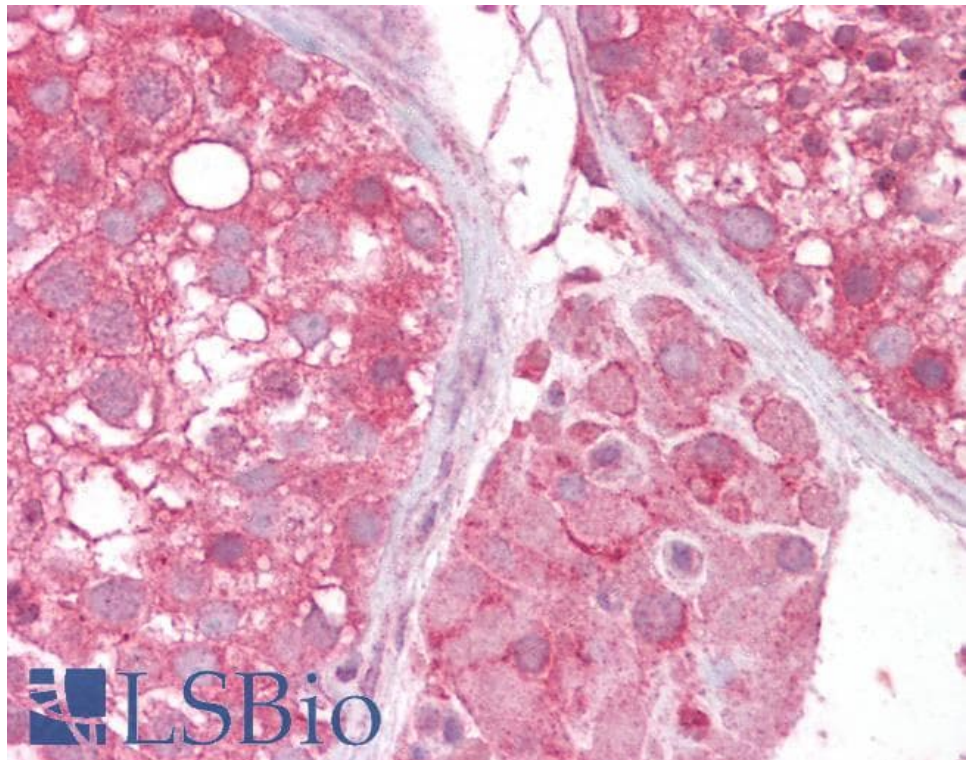
Species Reactivity

Tested: Human

Expected from sequence similarity: Human



EB05131 (1 μ g/ml) staining of A549 lysate (35 μ g protein in RIPA buffer). Primary incubation was 1 hour.
Detected by chemiluminescence.



EB05131 (2.5 μ g/ml) staining of paraffin embedded Human Testis. Steamed antigen retrieval with citrate buffer pH 6, AP-staining.