



UK Office

Everest Biotech Ltd

Cherwell Innovation Centre
77 Heyford Park
Upper Heyford
Oxfordshire
OX25 5HD
UK

Enquiries:

info@everestbiotech.com

Sales:

sales@everestbiotech.com

Tech support:

support@everestbiotech.com

Tel: +44 (0)1869 238326

Fax: +44 (0)1869 238327

US Office

Everest Biotech c/o Abcore

405 Maple Street, Suite A106
Ramona,
CA 92065
USA

Inquiries:

info@everestbiotech.com

Sales:

usasales@everestbiotech.com

Tech support:

support@everestbiotech.com

Tel: 888-320-4628 (toll-free)

Fax: 888-841-9041

www.everestbiotech.com

**Research Use Only. Not for
diagnostic or therapeutic use.**

EB07474 - Goat Anti-SLC22A16 Antibody

Size: 100µg specific antibody in 200µl



Target Protein

Principal Names: SLC22A16, solute carrier family 22 (organic cation transporter), member 16, RP1-261K5.1, CT2, FLIPT2, OCT6, OKB1, dJ261K5.1, OTTHUMP00000040478, WUGSC:RG331P03.1, carnitine transporter 2, fly-like putative organic ion transporter 2, organic cation transporter 6, solute carrier family 22, member 16

Official Symbol: SLC22A16

Accession Number(s): NP_149116.2

Human GeneID(s): [85413](#)

Immunogen

Peptide with sequence CSRNKRENTSSL, from the internal region of the protein sequence according to NP_149116.2.

Please note the [peptide](#) is available for sale.

Purification and Storage

Purified from goat serum by ammonium sulphate precipitation followed by antigen affinity chromatography using the immunizing peptide.

Supplied at 0.5 mg/ml in Tris saline, 0.02% sodium azide, pH7.3 with 0.5% bovine serum albumin.

Aliquot and store at -20°C. Minimize freezing and thawing.

Applications Tested

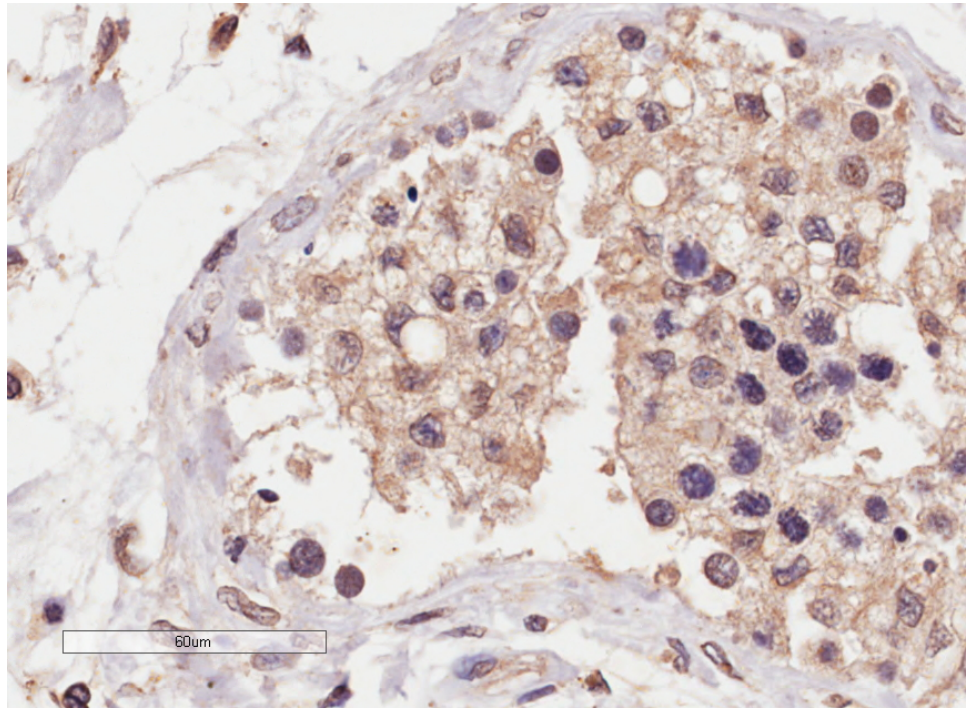
Peptide ELISA: antibody detection limit dilution 1:128000.

IHC: In paraffin embedded Human testis shows membranous staining in the seminiferous tubules. Recommended concentration, 1-2µg/ml.

Species Reactivity

Tested: Human

Expected from sequence similarity: Human



EB07474 (4μg/ml) staining of paraffin embedded Human Testis. Microwaved antigen retrieval with Tris/EDTA buffer pH9, HRP-staining.