



UK Office

Everest Biotech Ltd

Cherwell Innovation Centre
77 Heyford Park
Upper Heyford
Oxfordshire
OX25 5HD
UK

Enquiries:

info@everestbiotech.com

Sales:

sales@everestbiotech.com

Tech support:

support@everestbiotech.com

Tel: +44 (0)1869 238326

www.everestbiotech.com

**Research Use Only. Not for
diagnostic or therapeutic use.**

EB11204 - Goat Anti-SLC22A3 (aa321-335) Antibody

Size: 100µg specific antibody in 200µl



Target Protein

Principal Names: EMT, EMT organic cation transporter 3, EMTH, extraneuronal monoamine transporter, OCT3, organic cation transporter 3, solute carrier family 22 (extraneuronal monoamine transporter), member 3, solute carrier family 22 member 3, SLC22A3

Official Symbol: SLC22A3

Accession Number(s): NP_068812.1

Human GeneID(s): [6581](#)

Non-Human GeneID(s): 20519 (mouse), 29504 (rat)

Immunogen

Peptide with sequence C-SNYSEITVTDEEVSN, from the internal region of the protein sequence according to NP_068812.1.

Please note the [peptide](#) is available for sale.

Purification and Storage

Purified from goat serum by ammonium sulphate precipitation followed by antigen affinity chromatography using the immunizing peptide.

Supplied at 0.5 mg/ml in Tris saline, 0.02% sodium azide, pH7.3 with 0.5% bovine serum albumin.

Aliquot and store at -20°C. Minimize freezing and thawing.

Applications Tested

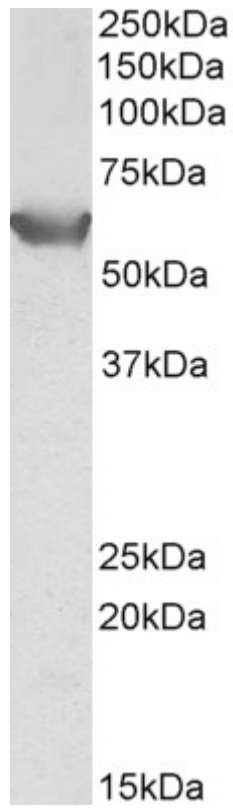
Peptide ELISA: antibody detection limit dilution 1:4000.

Western blot: Approx 55-60kDa band observed in lysates of cell lines A549, HEK293, MRC5 PD19 (calculated MW of 61.3kDa according to NP_068812.1). Recommended concentration: 0.5-2µg/ml.

Species Reactivity

Tested: Human

Expected from sequence similarity: Human, Mouse, Rat, Dog, Pig, Cow



EB11204 (0.5 μ g/ml) staining of HEK293 lysate (35 μ g protein in RIPA buffer). Primary incubation was 1 hour.
Detected by chemiluminescence.