



UK Office

Everest Biotech Ltd

Cherwell Innovation Centre
77 Heyford Park
Upper Heyford
Oxfordshire
OX25 5HD
UK

Enquiries:

info@everestbiotech.com

Sales:

sales@everestbiotech.com

Tech support:

support@everestbiotech.com

Tel: +44 (0)1869 238326

Fax: +44 (0)1869 238327

US Office

Everest Biotech c/o Abcore

405 Maple Street, Suite A106
Ramona,
CA 92065
USA

Inquiries:

info@everestbiotech.com

Sales:

usasales@everestbiotech.com

Tech support:

support@everestbiotech.com

Tel: 888-320-4628 (toll-free)

Fax: 888-841-9041

www.everestbiotech.com

**Research Use Only. Not for
diagnostic or therapeutic use.**

EB07262 - Goat Anti-SLC24A5 Antibody

Size: 100µg specific antibody in 200µl



Target Protein

Principal Names: SLC24A5, solute carrier family 24, member 5, JSX, NCKX5, ion transporter JSX, solute carrier family 24 (sodium/potassium/calcium exchanger), member 5

Official Symbol: SLC24A5

Accession Number(s): NP_995322.1

Human GeneID(s): [283652](#)

Non-Human GeneID(s): 317750 (mouse)

Immunogen

Peptide with sequence TTPDCRKKFWKN, from the internal region of the protein sequence according to NP_995322.1.

Please note the [peptide](#) is available for sale.

Purification and Storage

Purified from goat serum by ammonium sulphate precipitation followed by antigen affinity chromatography using the immunizing peptide.

Supplied at 0.5 mg/ml in Tris saline, 0.02% sodium azide, pH7.3 with 0.5% bovine serum albumin.

Aliquot and store at -20°C. Minimize freezing and thawing.

Applications Tested

Peptide ELISA: antibody detection limit dilution 1:2000.

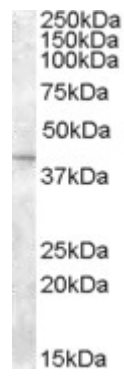
Western blot: Approx 40kDa band observed in Mouse Eye and Rat Skin lysates (calculated MW of 54.9 according to Human NP_995322.1, of 55.0kDa according to Mouse NP_778199.2 and of 38.1kDa according to Rat NP_001101239.1). The observed molecular weight corresponds to earlier findings in literature with different antibodies (Ginger et al, J Biol Chem. 2008 Feb 29;283(9):5486-95; PMID: 18166528).

Recommended concentration: 1-3µg/ml.

Species Reactivity

Tested: Mouse, Rat

Expected from sequence similarity: Human, Mouse, Rat, Dog



EB07262 (2 μ g/ml) staining of Mouse Eye lysate (35 μ g protein in RIPA buffer). Primary incubation was 1 hour.
Detected by chemiluminescence.