

## UK Office

### Everest Biotech Ltd

Cherwell Innovation Centre  
77 Heyford Park  
Upper Heyford  
Oxfordshire  
OX25 5HD  
UK

Enquiries:

[info@everestbiotech.com](mailto:info@everestbiotech.com)

Sales:

[sales@everestbiotech.com](mailto:sales@everestbiotech.com)

Tech support:

[support@everestbiotech.com](mailto:support@everestbiotech.com)

Tel: +44 (0)1869 238326

[www.everestbiotech.com](http://www.everestbiotech.com)

**Research Use Only. Not for  
diagnostic or therapeutic use.**

## EB12127 - Goat Anti-SLC26A1 / SAT-1 Antibody

Size: 100µg specific antibody in 200µl



### Target Protein

**Principal Names:** SLC26A1, solute carrier family 26 (sulfate transporter), member 1, EDM4, SAT-1, SAT1, sulfate anion transporter AT1, sulfate anion transporter 1, sulfate/anion transporter SAT-1 protein

**Official Symbol:** SLC26A1

**Accession Number(s):** NP\_071325.2; NP\_602297.1

**Human GeneID(s):** [10861](#)

**Important Comments:** This antibody is expected to recognize reported isoform a (NP\_071325.2) only. Reported variants represent identical protein: NP\_998778.1, NP\_071325.2

### Immunogen

Peptide with sequence C-QTARARHRELEATD, from the C Terminus of the protein sequence according to NP\_071325.2; NP\_602297.1.

Please note the [peptide](#) is available for sale.

### Purification and Storage

Purified from goat serum by ammonium sulphate precipitation followed by antigen affinity chromatography using the immunizing peptide.

Supplied at 0.5 mg/ml in Tris saline, 0.02% sodium azide, pH7.3 with 0.5% bovine serum albumin.

Aliquot and store at -20°C. Minimize freezing and thawing.

### Applications Tested

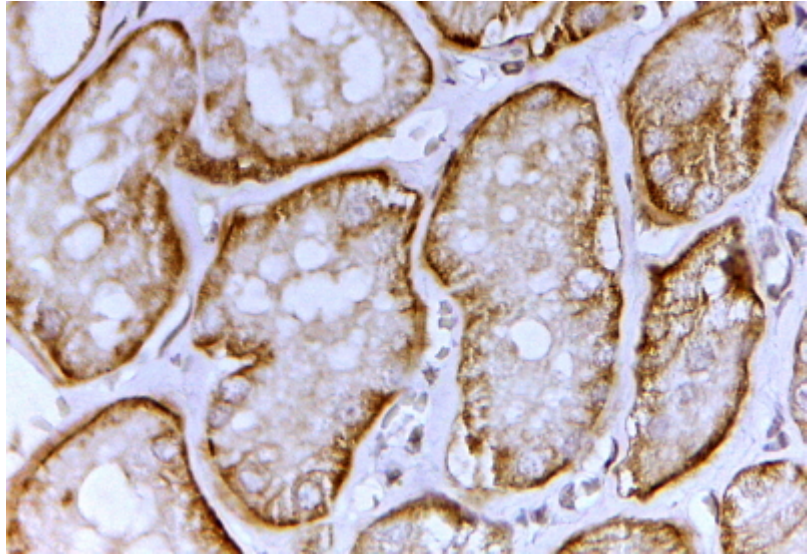
**Peptide ELISA:** antibody detection limit dilution 1:4000.

**IHC:** In paraffin embedded Human Kidney shows strong basal membrane staining in convoluted tubules. Recommended concentration, 2-4µg/ml.

### Species Reactivity

**Tested:** Human

**Expected from sequence similarity:** Human



EB12127 (2µg/ml) staining of paraffin embedded Human Kidney. Steamed antigen retrieval with citrate buffer pH 6, HRP-staining.