



UK Office

Everest Biotech Ltd

Cherwell Innovation Centre
77 Heyford Park
Upper Heyford
Oxfordshire
OX25 5HD
UK

Enquiries:

info@everestbiotech.com

Sales:

sales@everestbiotech.com

Tech support:

support@everestbiotech.com

Tel: +44 (0)1869 238326

www.everestbiotech.com

**Research Use Only. Not for
diagnostic or therapeutic use.**

EB09930 - Goat Anti-SLC26A6 Antibody

Size: 100µg specific antibody in 200µl



Target Protein

Principal Names: anion transporter 1, DKFZp586E1422, pendrin L1, pendrin-like protein 1, solute carrier family 26, member 6, sulfate anion transporter, SLC26A6

Official Symbol: SLC26A6

Accession Number(s): NP_075062.2; NP_599025.2; NP_602298.2; NP_001035544.1

Human GeneID(s): [65010](#)

Non-Human GeneID(s): 171429 (mouse), 301010 (rat)

Important Comments: This antibody is expected to recognize isoform 1, 2, 3 and 4 (NP_075062.2; NP_599025.2; NP_602298.2; NP_001035544.1).

Immunogen

Peptide with sequence C-RDVAEYSEAKEVR, from the internal region of the protein sequence according to NP_075062.2; NP_599025.2; NP_602298.2; NP_001035544.1.

Please note the [peptide](#) is available for sale.

Purification and Storage

Purified from goat serum by ammonium sulphate precipitation followed by antigen affinity chromatography using the immunizing peptide.

Supplied at 0.5 mg/ml in Tris saline, 0.02% sodium azide, pH7.3 with 0.5% bovine serum albumin.

Aliquot and store at -20°C. Minimize freezing and thawing.

Applications Tested

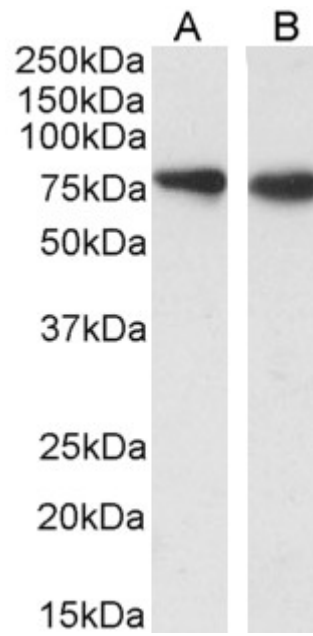
Peptide ELISA: antibody detection limit dilution 1:64000.

Western blot: Approx 80kDa band observed in Human and Mouse Pancreas lysates (calculated MW of 80.8kDa according to Human NP_602298.2 and 80.5kDa according to Mouse NP_599252.2). Recommended concentration: 0.1-0.3µg/ml. Primary incubation 1 hour at room temperature.

Species Reactivity

Tested: Human, Mouse

Expected from sequence similarity: Human, Mouse, Rat, Pig



EB09930 (0.3 μ g/ml) staining of Human (A) and Mouse (B) Pancreas lysate (35 μ g protein in RIPA buffer).
Detected by chemiluminescence.