

## UK Office

### Everest Biotech Ltd

Cherwell Innovation Centre  
77 Heyford Park  
Upper Heyford  
Oxfordshire  
OX25 5HD  
UK

Enquiries:

[info@everestbiotech.com](mailto:info@everestbiotech.com)

Sales:

[sales@everestbiotech.com](mailto:sales@everestbiotech.com)

Tech support:

[support@everestbiotech.com](mailto:support@everestbiotech.com)

Tel: +44 (0)1869 238326

[www.everestbiotech.com](http://www.everestbiotech.com)

**Research Use Only. Not for  
diagnostic or therapeutic use.**

## EB09929 - Goat Anti-SLC26A6 Antibody

Size: 100µg specific antibody in 200µl



### Target Protein

**Principal Names:** anion transporter 1, DKFZp586E1422, pendrin L1, pendrin-like protein 1, solute carrier family 26, member 6, sulfate anion transporter, SLC26A6

**Official Symbol:** SLC26A6

**Accession Number(s):** NP\_075062.2; NP\_599025.2; NP\_602298.2; NP\_001035544.1

**Human GeneID(s):** [65010](#)

**Non-Human GeneID(s):** 171429 (mouse)

**Important Comments:** This antibody is expected to recognize isoform 1, 2, 3 and 4 (NP\_075062.2; NP\_599025.2; NP\_602298.2; NP\_001035544.1). Please note that this antibody was shown unfit for Mouse tissues both in IHC and WB.

### Immunogen

Peptide with sequence C-SAPRTHQWRT, from the internal region of the protein sequence according to NP\_075062.2; NP\_599025.2; NP\_602298.2; NP\_001035544.1.

Please note the [peptide](#) is available for sale.

### Purification and Storage

Purified from goat serum by ammonium sulphate precipitation followed by antigen affinity chromatography using the immunizing peptide.

Supplied at 0.5 mg/ml in Tris saline, 0.02% sodium azide, pH7.3 with 0.5% bovine serum albumin.

Aliquot and store at -20°C. Minimize freezing and thawing.

### Applications Tested

**Peptide ELISA:** antibody detection limit dilution 1:8000.

**Western blot:** Approx 90kDa band observed in Human renal cortical brush-border membrane lysates (calculated MW of 83.0kDa according to NP\_075062.2).

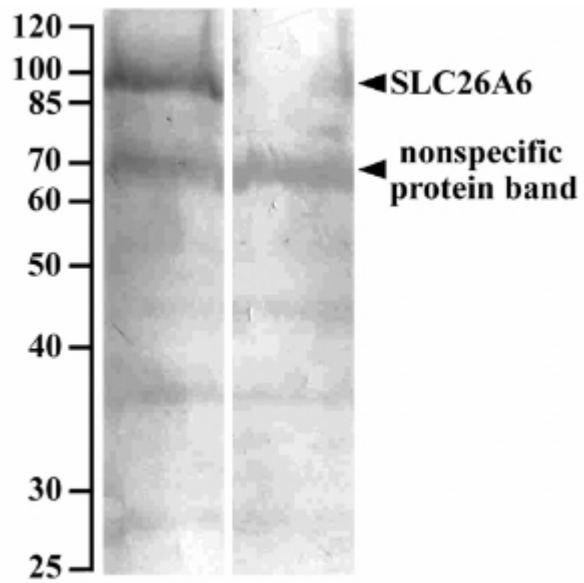
Recommended concentration: 10µg/ml for overnight incubation.

**IHC:** In paraffin embedded Human Kidney shows staining of brush borders along the entire proximal convoluted tubule. Recommended concentration, 0.1-0.3mg/ml. Please note the unusually low dilution required for this type of application!

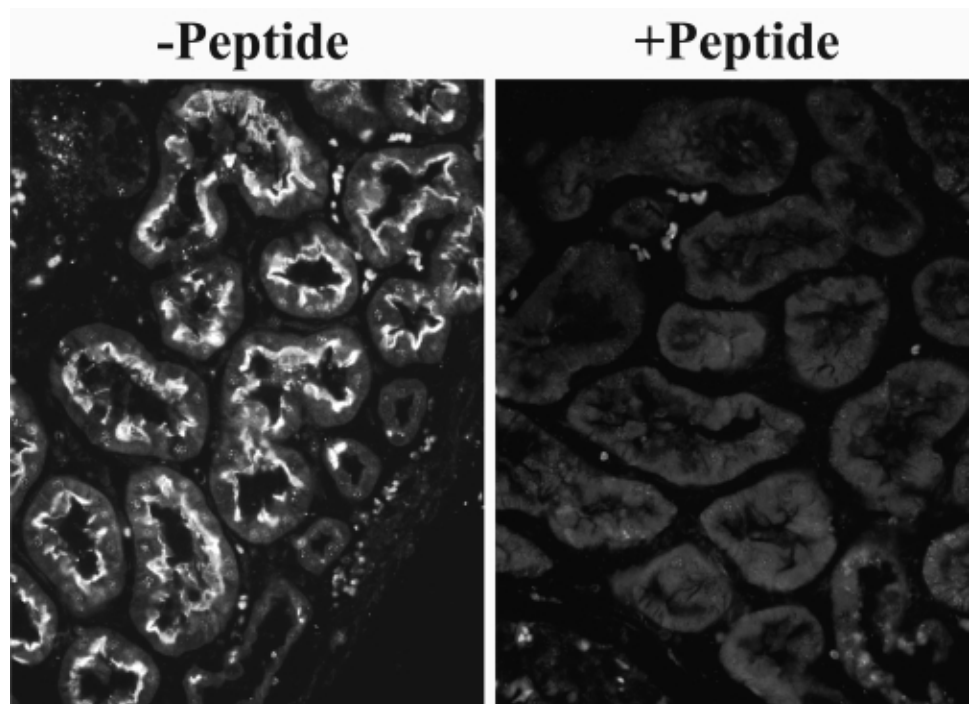
### Species Reactivity

**Tested:** Human

**Expected from sequence similarity:** Human



EB09929 (10 $\mu$ g/ml) staining of Human renal cortical brush-border membrane lysate (90 $\mu$ g protein denatured at 37C for 30min) with (B) and without (A) blocking with the immunizing peptide. Primary incubation was overnight at 4C. Detected by NBT/BCIP. Data kindly provided by Dean Karaica, B. Sc., and Ivan Sabolic, M.D., Ph.D., Institute for Medical Research and Occupational Health, Zagreb, Croatia.



EB09929 (0.1mg/ml) overnight staining of paraffin embedded Human Kidney. Microwaved antigen retrieval with citrate buffer pH 6, CY3-staining. Data kindly provided by Dean Karaica, B. Sc., and Ivan Sabolic, M.D., Ph.D., Institute for Medical Research and Occupational Health, Zagreb, Croatia.