



## UK Office

### Everest Biotech Ltd

Cherwell Innovation Centre  
77 Heyford Park  
Upper Heyford  
Oxfordshire  
OX25 5HD  
UK

Enquiries:

[info@everestbiotech.com](mailto:info@everestbiotech.com)

Sales:

[sales@everestbiotech.com](mailto:sales@everestbiotech.com)

Tech support:

[support@everestbiotech.com](mailto:support@everestbiotech.com)

Tel: +44 (0)1869 238326

[www.everestbiotech.com](http://www.everestbiotech.com)

**Research Use Only. Not for  
diagnostic or therapeutic use.**

## EB08490 - Goat Anti-SLC46A1 / PCFT Antibody

Size: 100µg specific antibody in 200µl



### Target Protein

**Principal Names:** SLC46A1, solute carrier family 46 (folate transporter), member 1, HCP1, MGC9564, PCFT, heme carrier protein 1, proton-coupled folate transporter, solute carrier family 46, member 1

**Official Symbol:** SLC46A1

**Accession Number(s):** NP\_542400.2

**Human GeneID(s):** [113235](#)

### Immunogen

Peptide with sequence YNGTRQRGGCSNRS, from the internal region of the protein sequence according to NP\_542400.2.

Please note the [peptide](#) is available for sale.

### Purification and Storage

Purified from goat serum by ammonium sulphate precipitation followed by antigen affinity chromatography using the immunizing peptide.

Supplied at 0.5 mg/ml in Tris saline, 0.02% sodium azide, pH7.3 with 0.5% bovine serum albumin.

Aliquot and store at -20°C. Minimize freezing and thawing.

### Applications Tested

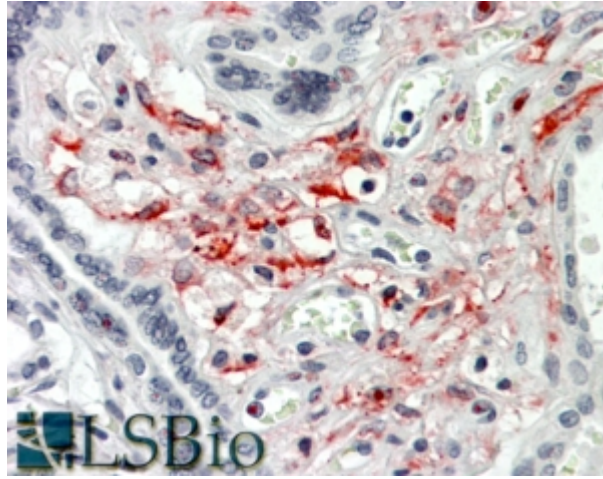
**Peptide ELISA:** antibody detection limit dilution 1:8000.

**IHC:** In paraffin embedded Human Placenta shows cytoplasm staining of mesenchymal cells. Recommended concentration, 3-5µg/ml.

### Species Reactivity

**Tested:** Human

**Expected from sequence similarity:** Human



EB08490 (3.8 $\mu$ g/ml) staining of paraffin embedded Human Placenta. Steamed antigen retrieval with citrate buffer pH 6, AP-staining.