



## UK Office

### Everest Biotech Ltd

Cherwell Innovation Centre  
77 Heyford Park  
Upper Heyford  
Oxfordshire  
OX25 5HD  
UK

Enquiries:

[info@everestbiotech.com](mailto:info@everestbiotech.com)

Sales:

[sales@everestbiotech.com](mailto:sales@everestbiotech.com)

Tech support:

[support@everestbiotech.com](mailto:support@everestbiotech.com)

Tel: +44 (0)1869 238326

Fax: +44 (0)1869 238327

## US Office

### Everest Biotech c/o Abcore

405 Maple Street, Suite A106  
Ramona,  
CA 92065  
USA

Inquiries:

[info@everestbiotech.com](mailto:info@everestbiotech.com)

Sales:

[usasales@everestbiotech.com](mailto:usasales@everestbiotech.com)

Tech support:

[support@everestbiotech.com](mailto:support@everestbiotech.com)

Tel: 888-320-4628 (toll-free)

Fax: 888-841-9041

[www.everestbiotech.com](http://www.everestbiotech.com)

**Research Use Only. Not for  
diagnostic or therapeutic use.**

## EB10662 - Goat Anti-SLC47A2 Antibody

Size: 100µg specific antibody in 200µl



### Target Protein

**Principal Names:** SLC47A2, solute carrier family 47, member 2, FLJ31196, MATE2, MATE2-B, MATE2-K, MATE2K, H+/organic cation antiporter, MATE-2, hMATE-2, kidney-specific H(+)/organic cation antiporter, multidrug and toxin extrusion 2, multidrug and toxin

**Official Symbol:** SLC47A2

**Accession Number(s):** NP\_690872.2; NP\_001093116.1

**Human GeneID(s):** [146802](#)

**Important Comments:** This antibody is expected to recognize both reported isoforms (NP\_690872.2; NP\_001093116.1).

### Immunogen

Peptide with sequence C-QRAESTATRPGPEK, from the internal region (near C terminus) of the protein sequence according to NP\_690872.2; NP\_001093116.1.

Please note the [peptide](#) is available for sale.

### Purification and Storage

Purified from goat serum by ammonium sulphate precipitation followed by antigen affinity chromatography using the immunizing peptide.

Supplied at 0.5 mg/ml in Tris saline, 0.02% sodium azide, pH7.3 with 0.5% bovine serum albumin.

Aliquot and store at -20°C. Minimize freezing and thawing.

### Applications Tested

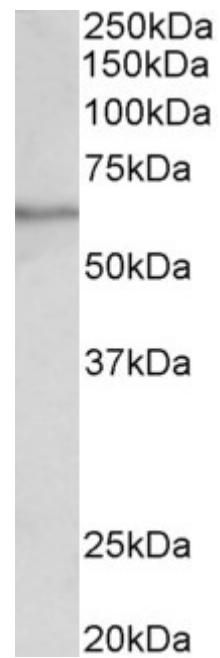
**Peptide ELISA:** antibody detection limit dilution 1:32000.

**Western blot:** Approx 60kDa band observed in Human Testis lysates (calculated MW of 61.0kDa according to NP\_001093116.1). Recommended concentration: 0.1-0.3µg/ml.

### Species Reactivity

**Tested:** Human

**Expected from sequence similarity:** Human



EB10662 (0.1 $\mu$ g/ml) staining of Human Testis lysate (35 $\mu$ g protein in RIPA buffer). Primary incubation was 1 hour. Detected by chemiluminescence.