



UK Office

Everest Biotech Ltd

Cherwell Innovation Centre
77 Heyford Park
Upper Heyford
Oxfordshire
OX25 5HD
UK

Enquiries:

info@everestbiotech.com

Sales:

sales@everestbiotech.com

Tech support:

support@everestbiotech.com

Tel: +44 (0)1869 238326

Fax: +44 (0)1869 238327

US Office

Everest Biotech c/o Abcore

405 Maple Street, Suite A106
Ramona,
CA 92065
USA

Inquiries:

info@everestbiotech.com

Sales:

usasales@everestbiotech.com

Tech support:

support@everestbiotech.com

Tel: 888-320-4628 (toll-free)

Fax: 888-841-9041

www.everestbiotech.com

**Research Use Only. Not for
diagnostic or therapeutic use.**

EB09681 - Goat Anti-SLC4A11 / BTR1 Antibody

Size: 100µg specific antibody in 200µl



Target Protein

Principal Names: SLC4A11, solute carrier family 4, sodium borate transporter, member 11, BTR1, CDPD, CDPD1, CHED2, MGC126418, MGC126419, NABC1, dJ794I6.2, OTTHUMP00000030097, bicarbonate transporter related protein 1, sodium-coupled borate cotransporter 1, solute carrier family 4 member 11, solute carrier family 4, sodium bicarbonate transporter-like, member 11

Official Symbol: SLC4A11

Accession Number(s): NP_114423.1

Human GeneID(s): [83959](#)

Non-Human GeneID(s): 269356 (mouse), 311423 (rat)

Immunogen

Peptide with sequence C-HTSRKYLKLNFKKEE, from the internal region of the protein sequence according to NP_114423.1.

Please note the [peptide](#) is available for sale.

Purification and Storage

Purified from goat serum by ammonium sulphate precipitation followed by antigen affinity chromatography using the immunizing peptide.

Supplied at 0.5 mg/ml in Tris saline, 0.02% sodium azide, pH7.3 with 0.5% bovine serum albumin.

Aliquot and store at -20°C. Minimize freezing and thawing.

Applications Tested

Peptide ELISA: antibody detection limit dilution 1:32000.

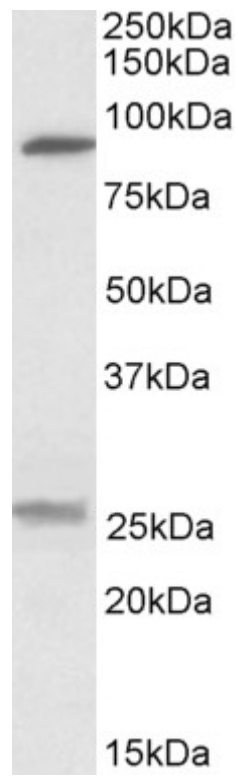
Western blot: Approx 90kDa band observed in Human Kidney lysates (calculated MW of 99.6kDa according to NP_114423.1). Recommended concentration: 0.3-1µg/ml. Primary incubation was 1 hour. An additional band of unknown identity was also consistently observed at 26kDa. This band was successfully blocked by incubation with the immunizing peptide.

IHC: Paraffin embedded Human Kidney. Recommended concentration: 3.75µg/ml.

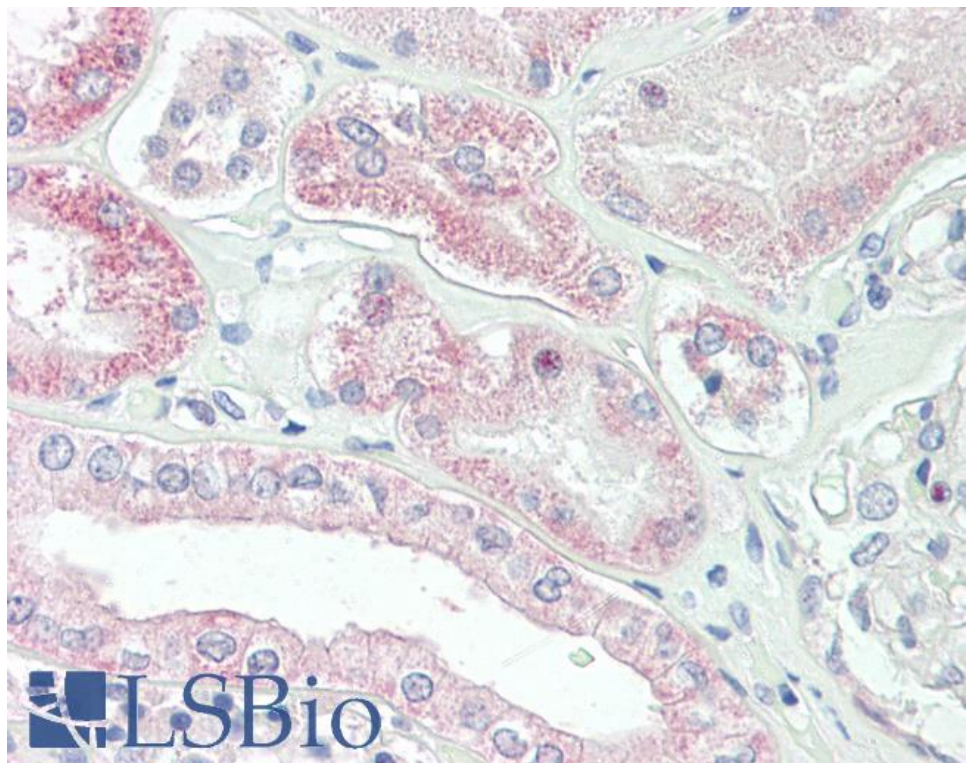
Species Reactivity

Tested: Human

Expected from sequence similarity: Human, Mouse, Rat, Dog, Cow



EB09681 (0.3 μ g/ml) staining of Human Kidney lysate (35 μ g protein in RIPA buffer). Detected by chemiluminescence.



EB09681 (3.75 μ g/ml) staining of paraffin embedded Human Kidney. Steamed antigen retrieval with citrate buffer pH 6, AP-staining.