

## UK Office

### Everest Biotech Ltd

Cherwell Innovation Centre  
77 Heyford Park  
Upper Heyford  
Oxfordshire  
OX25 5HD  
UK

Enquiries:

[info@everestbiotech.com](mailto:info@everestbiotech.com)

Sales:

[sales@everestbiotech.com](mailto:sales@everestbiotech.com)

Tech support:

[support@everestbiotech.com](mailto:support@everestbiotech.com)

Tel: +44 (0)1869 238326

[www.everestbiotech.com](http://www.everestbiotech.com)

**Research Use Only. Not for  
diagnostic or therapeutic use.**

## EB11861 - Goat Anti-SLC6A12 / BGT1 Antibody

Size: 100µg specific antibody in 200µl



### Target Protein

**Principal Names:** BGT1, BGT-1, FLJ38727, gamma-aminobutyric acid transporter, GAT2, Na(+)/Cl(-) betaine/GABA transporter, OTTHUMP00000115358, OTTHUMP00000237543, OTTHUMP00000237583, SLC6A12, sodium- and chloride-dependent betaine transporter, solute carrier family 6 (neurotransmitter transporter, betaine/GABA), member 12

**Official Symbol:** SLC6A12

**Accession Number(s):** NP\_003035.3

**Human GeneID(s):** [6539](#)

**Important Comments:** Reported variants represent identical protein: NP\_001193860.1, NP\_003035.3, NP\_001116319.1, NP\_001116320.1.

### Immunogen

Peptide with sequence CLDGSAGRNFGPSPT, from the C Terminus of the protein sequence according to NP\_003035.3.

Please note the [peptide](#) is available for sale.

### Purification and Storage

Purified from goat serum by ammonium sulphate precipitation followed by antigen affinity chromatography using the immunizing peptide.

Supplied at 0.5 mg/ml in Tris saline, 0.02% sodium azide, pH7.3 with 0.5% bovine serum albumin.

Aliquot and store at -20°C. Minimize freezing and thawing.

### Applications Tested

**Peptide ELISA:** antibody detection limit dilution 1:128000.

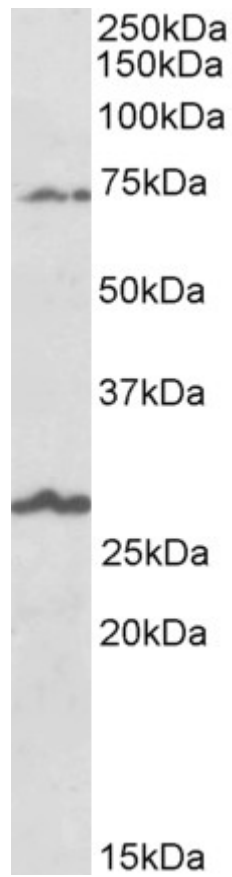
**Western blot:** Approx 70kDa band observed in Human Brain lysates from several regions (calculated MW of 69.4kDa according to NP\_003035.3). Recommended concentration: 1-3µg/ml. An additional band of unknown identity was also consistently observed at 27kDa. This band was successfully blocked by incubation with the immunizing peptide. Primary incubation was 1 hour.

**IHC:** Paraffin embedded Human Liver. Recommended concentration: 10µg/ml.

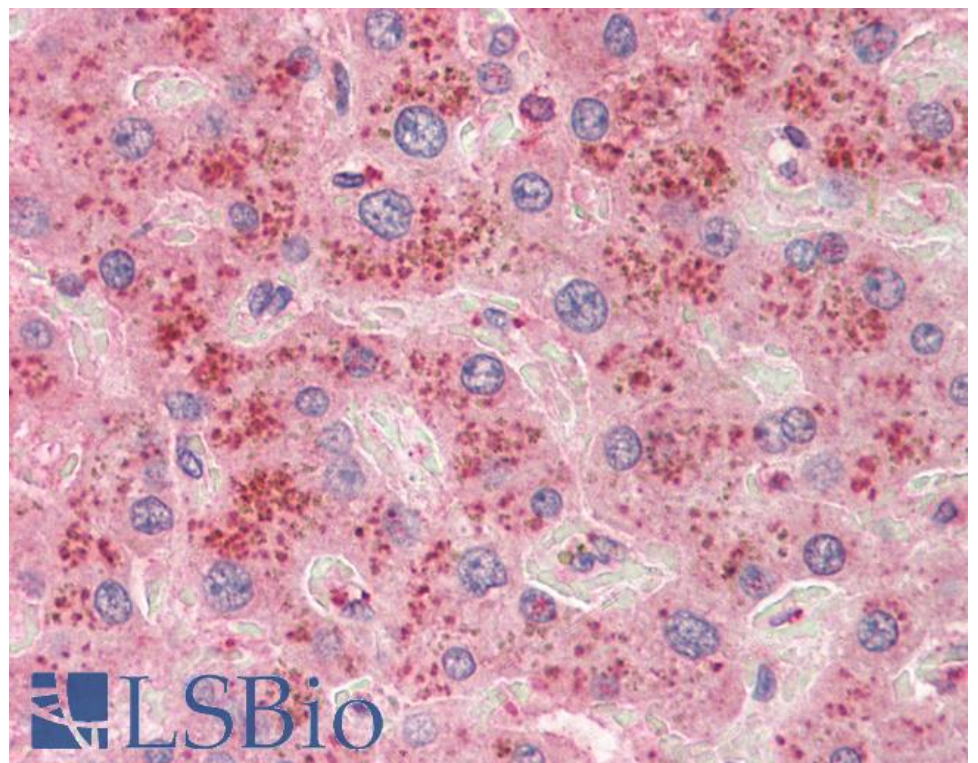
### Species Reactivity

**Tested:** Human

**Expected from sequence similarity:** Human



EB11861 (1µg/ml) staining of Human Olfactory bulb lysate (35µg protein in RIPA buffer). Detected by chemiluminescence.



EB11861 (10µg/ml) staining of paraffin embedded Human Liver. Steamed antigen retrieval with citrate buffer pH 6, AP-staining.