



Everest Biotech Ltd  
Cherwell Innovation Centre  
77 Heyford Park  
Upper Heyford  
Oxfordshire  
OX25 5HD, United Kingdom

[everestbiotech.com](http://everestbiotech.com)

[sales@everestbiotech.com](mailto:sales@everestbiotech.com)

[support@everestbiotech.com](mailto:support@everestbiotech.com)

Tel +44 1869 238326

Fax +44 1869 238327

**Research Use Only. Not for diagnostic or therapeutic use.**

Storage: For long-term storage keep aliquots at -20°C. (Store no longer than 12 months at 4°C). Minimize freezing and thawing.

## EB06743 - Goat Anti-SLC6A4 / 5HTT / SERT Antibody

Size: 100µg specific antibody in 200µl



### Target Protein

**Principal Names:** OTTHUMP00000163633, 5-HTTLPR, solute carrier family 6 member 4, sodium-dependent serotonin transporter, serotonin transporter, Na<sup>+</sup>/Cl<sup>-</sup> dependent serotonin transporter, 5HT transporter, 5-hydroxytryptamine transporter, hSERT, OCD1, HTT, 5-HTT, HGNC:11050, solute carrier family 6 (neurotransmitter transporter, serotonin), member 4, SERT, SLC6A4

**Official Symbol:** SLC6A4

**Accession Number(s):** NP\_001036.1

**Human GeneID(s):** [6532](#)

### Immunogen

Peptide with sequence C-LHQGERETWGK, from the internal region of the protein sequence according to NP\_001036.1.

Please note the [peptide](#) is available for sale.

### Purification and Storage

Purified from goat serum by ammonium sulphate precipitation followed by antigen affinity chromatography using the immunizing peptide.

Supplied at 0.5 mg/ml in Tris saline, 0.02% sodium azide, pH7.3 with 0.5% bovine serum albumin.

Aliquot and store at -20°C. Minimize freezing and thawing.

### Applications Tested

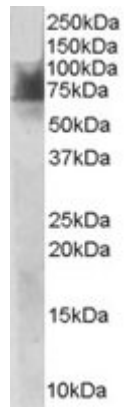
**Peptide ELISA:** antibody detection limit dilution 1:32000.

**Western blot:** Approx 70-75kDa bands observed in Human Duodenum lysates (calculated MW of 70.3kDa according to NP\_001036.1). Recommended concentration: 1-3µg/ml.

### Species Reactivity

**Tested:** Human

**Expected from sequence similarity:** Human, Mouse, Rat



EB06743 staining (1 $\mu$ g/ml) of Human Duodenum lysate (RIPA buffer, 30 $\mu$ g total protein per lane). Primary incubated for 1 hour. Detected by western blot using chemiluminescence.