



UK Office

Everest Biotech Ltd

Cherwell Innovation Centre
77 Heyford Park
Upper Heyford
Oxfordshire
OX25 5HD
UK

Enquiries:

info@everestbiotech.com

Sales:

sales@everestbiotech.com

Tech support:

support@everestbiotech.com

Tel: +44 (0)1869 238326

www.everestbiotech.com

**Research Use Only. Not for
diagnostic or therapeutic use.**

EB11315 - Goat Anti-SLC6A4 (aa605-618) Antibody

Size: 100µg specific antibody in 200µl

Target Protein

Principal Names: 5HT transporter, 5HTT, 5-HTT, 5-HTTLPR, 5-hydroxytryptamine transporter, hSERT, HTT, Na⁺/Cl⁻ dependent serotonin transporter, OCD1, OTTHUMP00000163632, OTTHUMP00000163633, SERT, sodium-dependent serotonin transporter, solute carrier family 6 (neurotransmitter transporter, serotonin), member 4, solute carrier family 6 member 4, SLC6A4

Official Symbol: SLC6A4

Accession Number(s): NP_001036.1

Human GeneID(s): [6532](#)

Non-Human GeneID(s): 15567 (mouse), 25553 (rat)

Immunogen

Peptide with sequence C-KERIIKSITPETPT, from the C Terminus of the protein sequence according to NP_001036.1.

Please note the [peptide](#) is available for sale.

Purification and Storage

Purified from goat serum by ammonium sulphate precipitation followed by antigen affinity chromatography using the immunizing peptide.

Supplied at 0.5 mg/ml in Tris saline, 0.02% sodium azide, pH7.3 with 0.5% bovine serum albumin.

Aliquot and store at -20°C. Minimize freezing and thawing.

Applications Tested

Peptide ELISA: antibody detection limit dilution 1:32000.

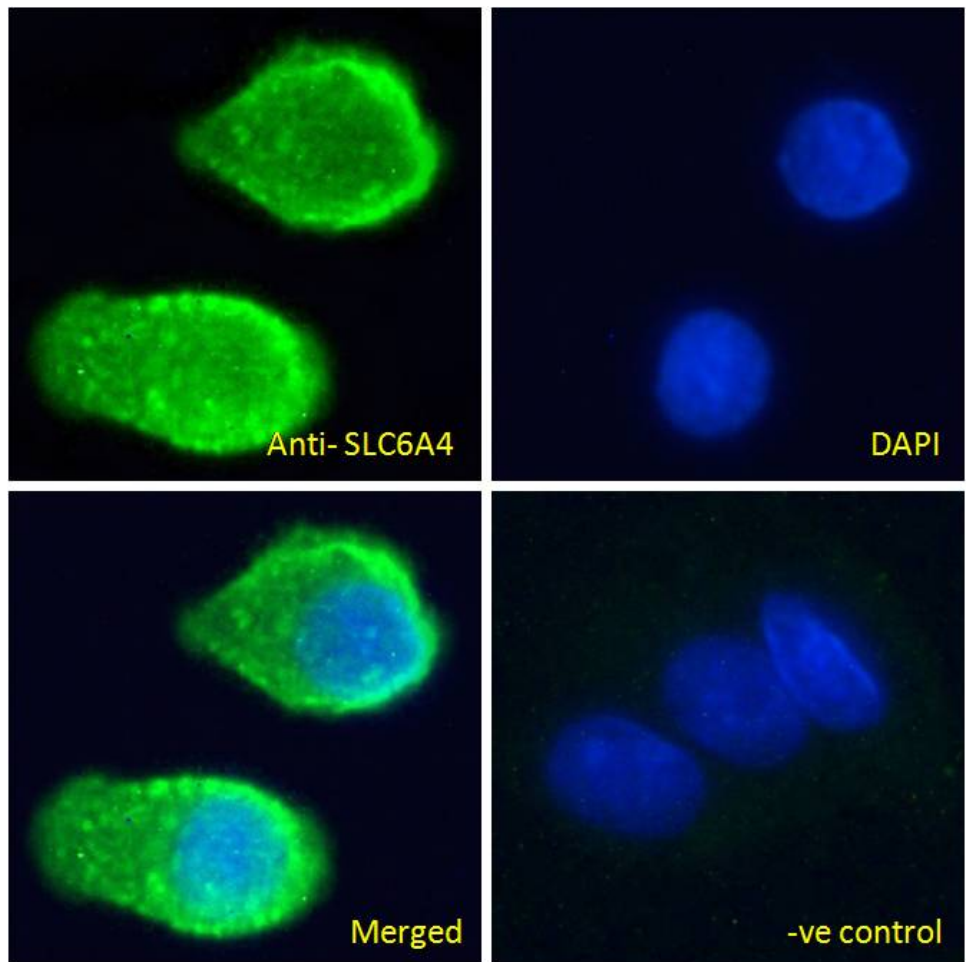
Immunofluorescence: Strong expression of the protein seen in the Golgi apparatus/vesicles of HepG2 cells. Recommended concentration: 10µg/ml.

Flow Cytometry: Flow cytometric analysis of Jurkat cells. Recommended concentration: 10ug/ml.

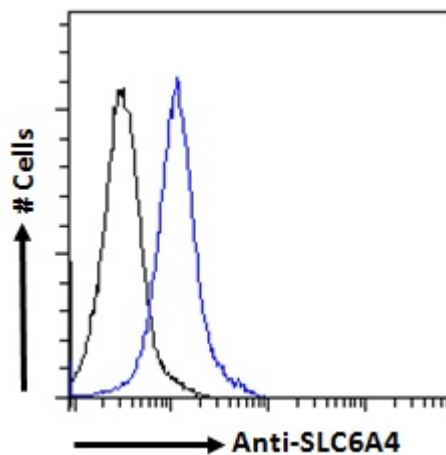
Species Reactivity

Tested: Human

Expected from sequence similarity: Human, Mouse, Rat, Cow



EB11315 Immunofluorescence analysis of paraformaldehyde fixed HepG2 cells, permeabilized with 0.15% Triton. Primary incubation 1hr (10ug/ml) followed by Alexa Fluor 488 secondary antibody (2ug/ml), showing Golgi apparatus/vesicle staining. The nuclear stain is DAPI (blue). Negative control: Unimmunized goat IgG (10ug/ml) followed by Alexa Fluor 488 secondary antibody (2ug/ml).



EB11315 Flow cytometric analysis of paraformaldehyde fixed Jurkat cells (blue line), permeabilized with 0.5% Triton. Primary incubation 1hr (10ug/ml) followed by Alexa Fluor 488 secondary antibody (2ug/ml). IgG control: Unimmunized goat IgG (black line) followed by Alexa Fluor 488 secondary antibody.