



UK Office

Everest Biotech Ltd

Cherwell Innovation Centre
77 Heyford Park
Upper Heyford
Oxfordshire
OX25 5HD
UK

Enquiries:

info@everestbiotech.com

Sales:

sales@everestbiotech.com

Tech support:

support@everestbiotech.com

Tel: +44 (0)1869 238326

Fax: +44 (0)1869 238327

US Office

Everest Biotech c/o Abcore

405 Maple Street, Suite A106
Ramona,
CA 92065
USA

Inquiries:

info@everestbiotech.com

Sales:

usasales@everestbiotech.com

Tech support:

support@everestbiotech.com

Tel: 888-320-4628 (toll-free)

Fax: 888-841-9041

www.everestbiotech.com

**Research Use Only. Not for
diagnostic or therapeutic use.**

EB12064 - Goat Anti-SLC7A6 / y+LAT-2 (C Terminus) Antibody

Size: 100µg specific antibody in 200µl



Target Protein

Principal Names: SLC7A6, solute carrier family 7 (amino acid transporter light chain, y+L system), member 6, LAT-2, LAT3, y+LAT-2, Y+L amino acid transporter 2, amino acid permease, cationic amino acid transporter, y+ system, solute carrier family 7 (cationic amino acid transporter, y+ system), member 6, solute carrier family 7 member 6, y(+)-L-type amino acid transporter 2, y+LAT2

Official Symbol: SLC7A6

Accession Number(s): NP_003974.3

Human GeneID(s): [9057](#)

Important Comments: Reported variants represent identical protein: NP_003974.3, NP_001070253.1

Immunogen

Peptide with sequence C-ELDVAAEEKKDERKTD, from the C Terminus of the protein sequence according to NP_003974.3.

Please note the [peptide](#) is available for sale.

Purification and Storage

Purified from goat serum by ammonium sulphate precipitation followed by antigen affinity chromatography using the immunizing peptide.

Supplied at 0.5 mg/ml in Tris saline, 0.02% sodium azide, pH7.3 with 0.5% bovine serum albumin.

Aliquot and store at -20°C. Minimize freezing and thawing.

Applications Tested

Peptide ELISA: antibody detection limit dilution 1:32000.

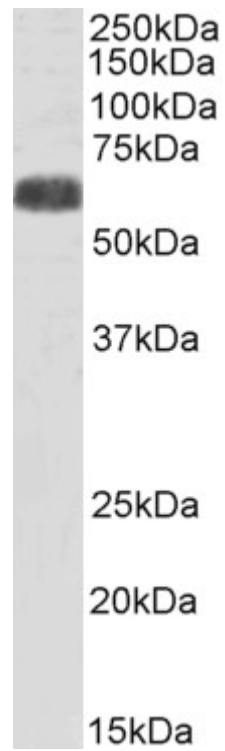
Western blot: Approx 58-60kDa band observed in Human Heart lysates (calculated MW of 56.8kDa according to NP_003974.3. Recommended concentration: 0.3-1µg/ml. Primary incubation was 1 hour.

IHC: Paraffin embedded Human Brain (Cerebellum). Recommended concentration: 5µg/ml.

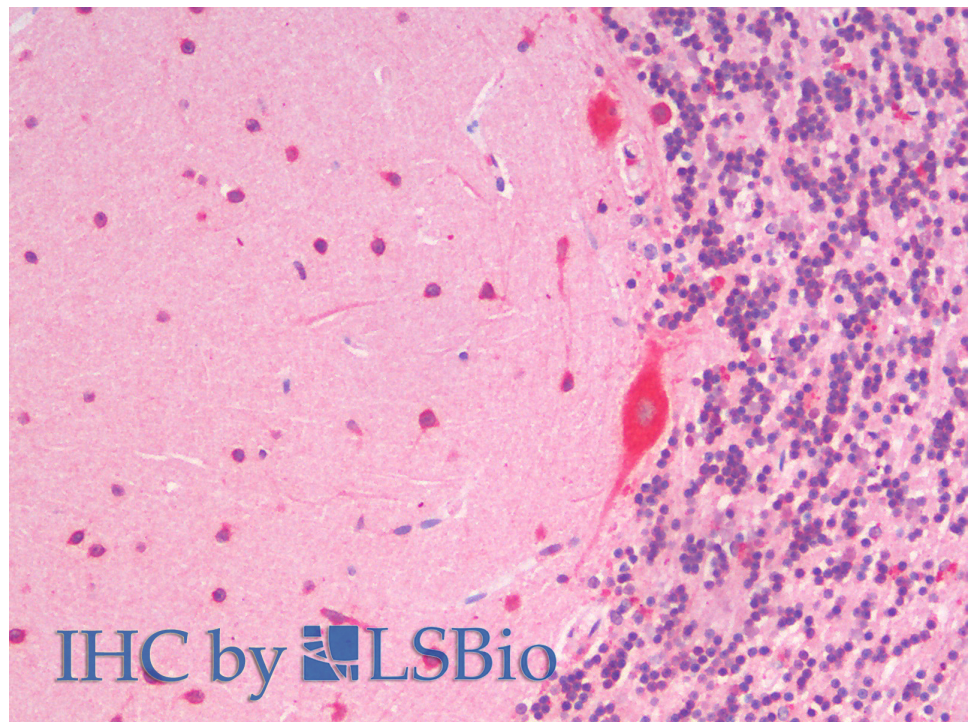
Species Reactivity

Tested: Human

Expected from sequence similarity: Human



EB12064 (0.3 μ g/ml) staining of Human Heart lysate (35 μ g protein in RIPA buffer). Detected by chemiluminescence



EB12064 (5 μ g/ml) staining of paraffin embedded Human Cerebellum. Steamed antigen retrieval with citrate buffer pH 6, AP-staining.