

UK Office

Everest Biotech Ltd

Cherwell Innovation Centre
77 Heyford Park
Upper Heyford
Oxfordshire
OX25 5HD
UK

Enquiries:

info@everestbiotech.com

Sales:

sales@everestbiotech.com

Tech support:

support@everestbiotech.com

Tel: +44 (0)1869 238326

www.everestbiotech.com

**Research Use Only. Not for
diagnostic or therapeutic use.**

EB12061 - Goat Anti-SLC7A7 / y+LAT-1 Antibody

Size: 100µg specific antibody in 200µl



Target Protein

Principal Names: SLC7A7, solute carrier family 7 (amino acid transporter light chain, y+L system), member 7, LAT3, LPI, MOP-2, Y+LAT1, y+LAT-1, Y+L amino acid transporter 1, monocyte amino acid permease 2, solute carrier family 7 (cationic amino acid transporter, y+ system), member 7, y(+)-L-type amino acid transporter 1

Official Symbol: SLC7A7

Accession Number(s): NP_001119577.1

Human GeneID(s): [9056](#)

Important Comments: Reported variants represent identical protein: NP_001119577.1, NP_001119578.1

Immunogen

Peptide with sequence SQPEVETSPLGD-C, from the N Terminus of the protein sequence according to NP_001119577.1.

Please note the [peptide](#) is available for sale.

Purification and Storage

Purified from goat serum by ammonium sulphate precipitation followed by antigen affinity chromatography using the immunizing peptide.

Supplied at 0.5 mg/ml in Tris saline, 0.02% sodium azide, pH7.3 with 0.5% bovine serum albumin.

Aliquot and store at -20°C. Minimize freezing and thawing.

Applications Tested

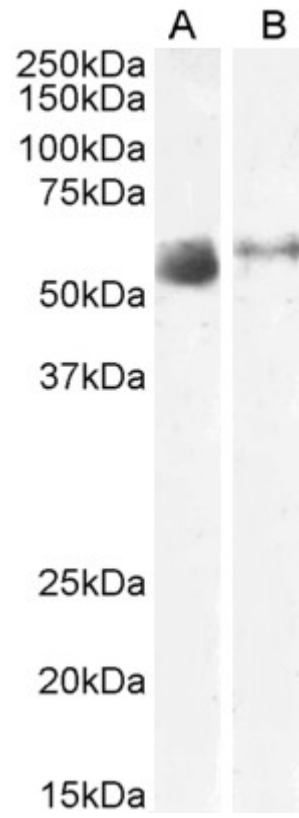
Peptide ELISA: antibody detection limit dilution 1:128000.

Western blot: Approx 55-58kDa band observed in Human Lung and Skeletal Muscle lysates (calculated MW of 56.0kDa according to NP_001119577.1. Recommended concentration: 1-3µg/ml.

Species Reactivity

Tested: Human

Expected from sequence similarity: Human



EB12061 (2 μ g/ml) staining of Human Lung (A) and Skeletal Muscle (B) lysate (35 μ g protein in RIPA buffer). Primary incubation was 1 hour. Detected by chemiluminescence