



## UK Office

### Everest Biotech Ltd

Cherwell Innovation Centre  
77 Heyford Park  
Upper Heyford  
Oxfordshire  
OX25 5HD  
UK

Enquiries:

[info@everestbiotech.com](mailto:info@everestbiotech.com)

Sales:

[sales@everestbiotech.com](mailto:sales@everestbiotech.com)

Tech support:

[support@everestbiotech.com](mailto:support@everestbiotech.com)

Tel: +44 (0)1869 238326

[www.everestbiotech.com](http://www.everestbiotech.com)

**Research Use Only. Not for  
diagnostic or therapeutic use.**

## EB07287 - Goat Anti-SLIT2 Antibody

Size: 100µg specific antibody in 200µl



### Target Protein

**Principal Names:** SLIT2, slit homolog 2 (Drosophila), HGNC:11086, SLIL3, Slit-2

**Official Symbol:** SLIT2

**Accession Number(s):** NP\_004778.1

**Human GeneID(s):** [9353](#)

**Non-Human GeneID(s):** 20563 (mouse), 360272 (rat)

### Immunogen

Peptide with sequence DDCQDNKCKNGAH, from the internal region of the protein sequence according to NP\_004778.1.

Please note the [peptide](#) is available for sale.

### Purification and Storage

Purified from goat serum by ammonium sulphate precipitation followed by antigen affinity chromatography using the immunizing peptide.

Supplied at 0.5 mg/ml in Tris saline, 0.02% sodium azide, pH7.3 with 0.5% bovine serum albumin.

Aliquot and store at -20°C. Minimize freezing and thawing.

### Applications Tested

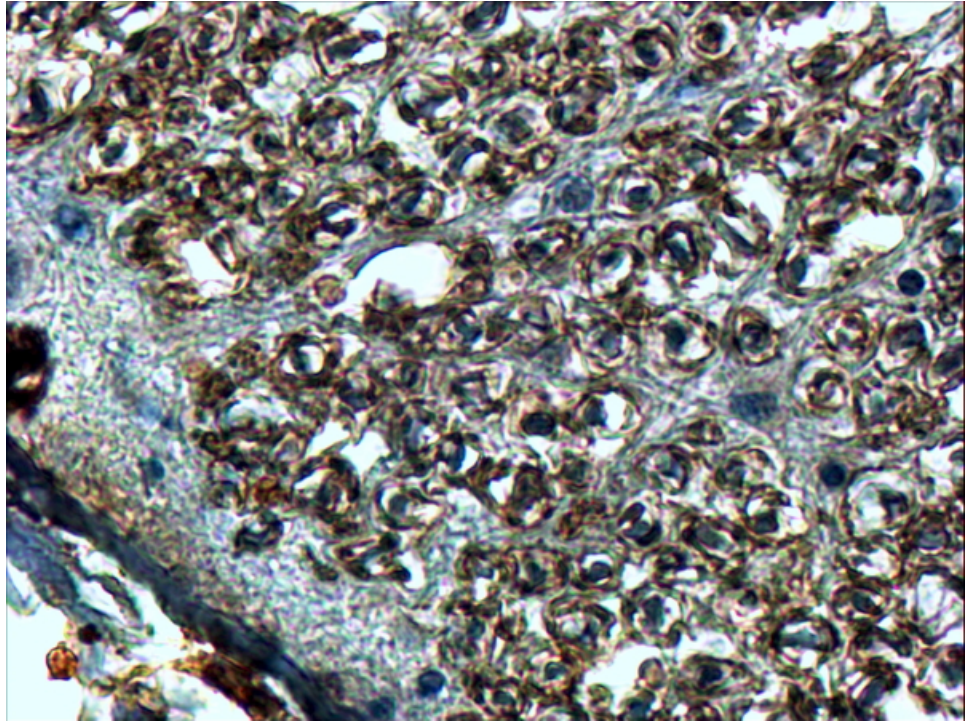
**Peptide ELISA:** antibody detection limit dilution 1:1000.

**IHC:** In paraffin embedded Human Spinal Cord shows staining of the cellular membrane in the bundles of sensory fibres. Recommended concentration, 4-8µg/ml.

### Species Reactivity

**Tested:** Human

**Expected from sequence similarity:** Human, Mouse, Rat, Dog



EB07287 (4µg/ml) staining of paraffin embedded Human Spinal Cord. Steamed antigen retrieval with Tris/EDTA buffer pH 9, HRP-staining.