



UK Office

Everest Biotech Ltd

Cherwell Innovation Centre
77 Heyford Park
Upper Heyford
Oxfordshire
OX25 5HD
UK

Enquiries:

info@everestbiotech.com

Sales:

sales@everestbiotech.com

Tech support:

support@everestbiotech.com

Tel: +44 (0)1869 238326

Fax: +44 (0)1869 238327

US Office

Everest Biotech c/o Abcore

405 Maple Street, Suite A106
Ramona,
CA 92065
USA

Inquiries:

info@everestbiotech.com

Sales:

usasales@everestbiotech.com

Tech support:

support@everestbiotech.com

Tel: 888-320-4628 (toll-free)

Fax: 888-841-9041

www.everestbiotech.com

**Research Use Only. Not for
diagnostic or therapeutic use.**

EB06411 - Goat Anti-SLP76 / LCP2 Antibody

Size: 100µg specific antibody in 200µl



Target Protein

Principal Names: LCP2, SLP76, SLP-76, lymphocyte cytosolic protein 2 (SH2 domain containing leukocyte protein of 76kDa), 76 kDa tyrosine phosphoprotein, SH2 domain-containing leukocyte protein of 76kD, lymphocyte cytosolic protein 2 (SH2 domain containing leukocyte protein of 76kD)

Official Symbol: LCP2

Accession Number(s): NP_005556.1

Human GeneID(s): [3937](#)

Immunogen

Peptide with sequence ALRNVPFRSEV-C, from the N Terminus of the protein sequence according to NP_005556.1.

Please note the [peptide](#) is available for sale.

Purification and Storage

Purified from goat serum by ammonium sulphate precipitation followed by antigen affinity chromatography using the immunizing peptide.

Supplied at 0.5 mg/ml in Tris saline, 0.02% sodium azide, pH7.3 with 0.5% bovine serum albumin.

Aliquot and store at -20°C. Minimize freezing and thawing.

Applications Tested

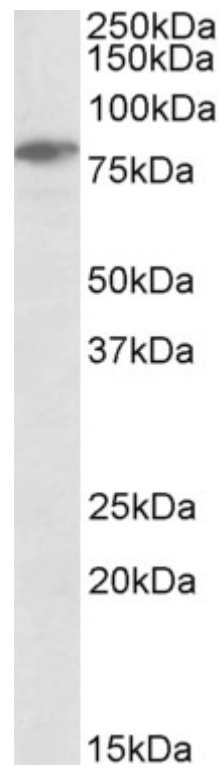
Peptide ELISA: antibody detection limit dilution 1:128000.

Western blot: Approx 80kDa band observed in lysates of cell line Jurkat (calculated MW of 60.2kDa according to NP_005556.1). The observed molecular weight corresponds to earlier findings in literature with different antibodies (Jackman et al, J Biol Chem. 1995 Mar 31;270(13):7029-32. PMID: 7706237). Recommended concentration: 0.3-1µg/ml.

Species Reactivity

Tested: Human

Expected from sequence similarity: Human, Mouse, Rat, Dog, Pig, Cow



EB06411 (0.3µg/ml) staining of Jurkat lysate (35µg protein in RIPA buffer). Primary incubation was 1 hour.
Detected by chemiluminescence.