



## UK Office

### Everest Biotech Ltd

Cherwell Innovation Centre  
77 Heyford Park  
Upper Heyford  
Oxfordshire  
OX25 5HD  
UK

Enquiries:

[info@everestbiotech.com](mailto:info@everestbiotech.com)

Sales:

[sales@everestbiotech.com](mailto:sales@everestbiotech.com)

Tech support:

[support@everestbiotech.com](mailto:support@everestbiotech.com)

Tel: +44 (0)1869 238326

Fax: +44 (0)1869 238327

## US Office

### Everest Biotech c/o Abcore

405 Maple Street, Suite A106  
Ramona,  
CA 92065  
USA

Inquiries:

[info@everestbiotech.com](mailto:info@everestbiotech.com)

Sales:

[usasales@everestbiotech.com](mailto:usasales@everestbiotech.com)

Tech support:

[support@everestbiotech.com](mailto:support@everestbiotech.com)

Tel: 888-320-4628 (toll-free)

Fax: 888-841-9041

[www.everestbiotech.com](http://www.everestbiotech.com)

**Research Use Only. Not for  
diagnostic or therapeutic use.**

## EB05147 - Goat Anti-SMAD2 / MADH2 Antibody

Size: 100µg specific antibody in 200µl



### Target Protein

**Principal Names:** MADH2, SMAD2, MAD, mothers against decapentaplegic homolog 2 (Drosophila), JV18, MADR2, JV18-1, Mothers against decapentaplegic, Drosophila, homolog of, 2, MAD (mothers against decapentaplegic, Drosophila) homolog 2, SMAD family member 2, MGC22139, MGC34440, hMAD-2, hSMAD2, MAD, mothers against decapentaplegic homolog 2, Mad, mothers against decapentaplegic homolog 2, Mad protein homolog, Mad-related protein 2, SMAD, mothers against DPP homolog 2, Sma- and Mad-related protein 2, mother against DPP homolog 2

**Official Symbol:** SMAD2

**Accession Number(s):** NP\_005892.1

**Human GeneID(s):** [4087](#)

### Immunogen

Peptide with sequence SEIWGLSTPNTIDC, from the internal region of the protein sequence according to NP\_005892.1.

Please note the [peptide](#) is available for sale.

### Purification and Storage

Purified from goat serum by ammonium sulphate precipitation followed by antigen affinity chromatography using the immunizing peptide.

Supplied at 0.5 mg/ml in Tris saline, 0.02% sodium azide, pH7.3 with 0.5% bovine serum albumin.

Aliquot and store at -20°C. Minimize freezing and thawing.

### Applications Tested

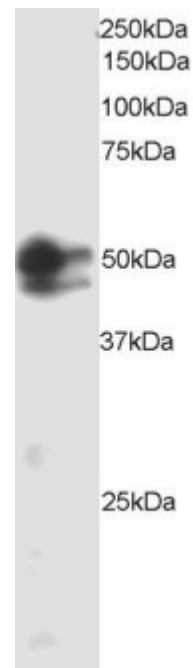
**Peptide ELISA:** antibody detection limit dilution 1:4000.

**Western blot:** Approx 45kDa and 50kDa bands observed in lysates of cell line HeLa, and approx. 50kDa band in Mouse Testis lysates (calculated MWt of 52.3kDa according to Human NP\_005892.1 and Mouse NP\_001239410.1) Recommended concentration: 1-2µg/ml.

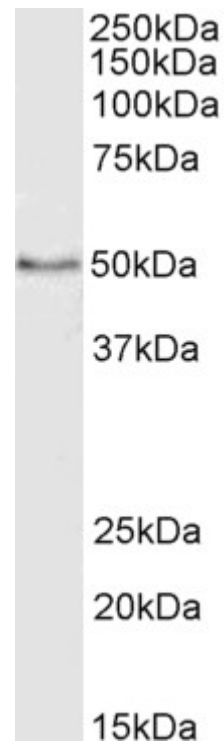
### Species Reactivity

**Tested:** Human, Mouse

**Expected from sequence similarity:** Human, Cow



EB05147(2 $\mu$ g/ml) staining of HeLa cell lysate (35 $\mu$ g protein in RIPA buffer). Primary incubation was 1 hour.  
Detected by chemiluminescence.



EB05147 (2 $\mu$ g/ml) staining of Mouse Testes lysate (35 $\mu$ g protein in RIPA buffer). Primary incubation was 1 hour.  
Detected by chemiluminescence.