

## UK Office

### Everest Biotech Ltd

Cherwell Innovation Centre  
77 Heyford Park  
Upper Heyford  
Oxfordshire  
OX25 5HD  
UK

Enquiries:

[info@everestbiotech.com](mailto:info@everestbiotech.com)

Sales:

[sales@everestbiotech.com](mailto:sales@everestbiotech.com)

Tech support:

[support@everestbiotech.com](mailto:support@everestbiotech.com)

Tel: +44 (0)1869 238326

[www.everestbiotech.com](http://www.everestbiotech.com)

**Research Use Only. Not for  
diagnostic or therapeutic use.**

## EB07982 - Goat Anti-SMEK1 / KIAA2010 Antibody

Size: 100µg specific antibody in 200µl



### Target Protein

**Principal Names:** SMEK homolog 1, suppressor of mek1 (Dictyostelium), KIAA2010, FLFL1, MSTP033, smk-1, smk1, SMEK homolog 1, suppressor of mek1

**Official Symbol:** SMEK1

**Accession Number(s):** NP\_115949.3

**Human GeneID(s):** [55671](#)

**Non-Human GeneID(s):** 68734 (mouse), 314388 (rat)

### Immunogen

Peptide with sequence C-EQQRERQDNPGLD, from the internal region of the protein sequence according to NP\_115949.3.

Please note the [peptide](#) is available for sale.

### Purification and Storage

Purified from goat serum by ammonium sulphate precipitation followed by antigen affinity chromatography using the immunizing peptide.

Supplied at 0.5 mg/ml in Tris saline, 0.02% sodium azide, pH7.3 with 0.5% bovine serum albumin.

Aliquot and store at -20°C. Minimize freezing and thawing.

### Applications Tested

**Peptide ELISA:** antibody detection limit dilution 1:16000.

**Western blot:** Approx 110kDa band observed in Human Pancreas lysates (calculated MW of 93.9kDa according to NP\_115949.3). In transfected HEK293 transiently expressing SMEK1 a band of approx. 95kDa is observed. This band is not observed in the non-transfected HEK293. Recommended concentration: 0.3-1µg/ml.

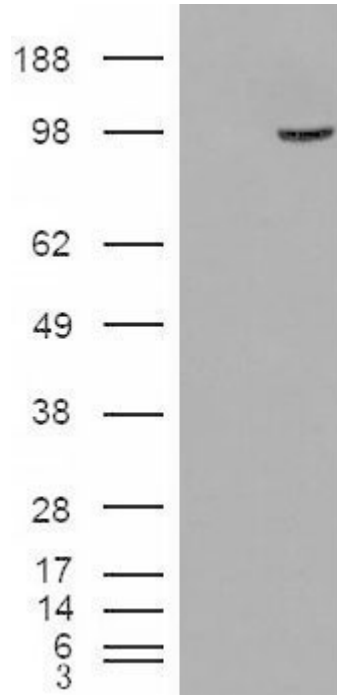
### Species Reactivity

**Tested:** Human

**Expected from sequence similarity:** Human, Mouse, Rat, Dog

250kDa  
150kDa  
100kDa  
75kDa  
50kDa  
37kDa  
25kDa  
20kDa  
15kDa

EB07982 (0.3µg/ml) staining of Human Pancreas lysate (35µg protein in RIPA buffer). Primary incubation was 1 hour. Detected by chemiluminescence.



HEK293 overexpressing SMEK1 (RC221040) and probed with EB07982 (mock transfection in first lane), tested by Origene.