



## UK Office

### Everest Biotech Ltd

Cherwell Innovation Centre  
77 Heyford Park  
Upper Heyford  
Oxfordshire  
OX25 5HD  
UK

Enquiries:

[info@everestbiotech.com](mailto:info@everestbiotech.com)

Sales:

[sales@everestbiotech.com](mailto:sales@everestbiotech.com)

Tech support:

[support@everestbiotech.com](mailto:support@everestbiotech.com)

Tel: +44 (0)1869 238326

Fax: +44 (0)1869 238327

## US Office

### Everest Biotech c/o Abcore

405 Maple Street, Suite A106  
Ramona,  
CA 92065  
USA

Inquiries:

[info@everestbiotech.com](mailto:info@everestbiotech.com)

Sales:

[usasales@everestbiotech.com](mailto:usasales@everestbiotech.com)

Tech support:

[support@everestbiotech.com](mailto:support@everestbiotech.com)

Tel: 888-320-4628 (toll-free)

Fax: 888-841-9041

[www.everestbiotech.com](http://www.everestbiotech.com)

**Research Use Only. Not for  
diagnostic or therapeutic use.**

## EB10231 - Goat Anti-SNAP23 (aa 135-144) Antibody

Size: 100µg specific antibody in 200µl



### Target Protein

**Principal Names:** HsT17016, OTTHUMP00000161263, SNAP23A, SNAP23B, synaptosomal-associated protein 23, synaptosomal-associated protein, 23kDa, SNAP23

**Official Symbol:** SNAP23

**Accession Number(s):** NP\_003816.2; NP\_570710.1

**Human GeneID(s):** [8773](#)

**Non-Human GeneID(s):** 20619 (mouse), 64630 (rat)

**Important Comments:** This antibody is expected to recognize both isoforms (NP\_003816.2; NP\_570710.1). Amino acid numbering in name refers to NP\_003816.2 sequence.

### Immunogen

Peptide with sequence C-TDKADTNRDR, from the C Terminus of the protein sequence according to NP\_003816.2; NP\_570710.1.

Please note the [peptide](#) is available for sale.

### Purification and Storage

Purified from goat serum by ammonium sulphate precipitation followed by antigen affinity chromatography using the immunizing peptide.

Supplied at 0.5 mg/ml in Tris saline, 0.02% sodium azide, pH7.3 with 0.5% bovine serum albumin.

Aliquot and store at -20°C. Minimize freezing and thawing.

### Applications Tested

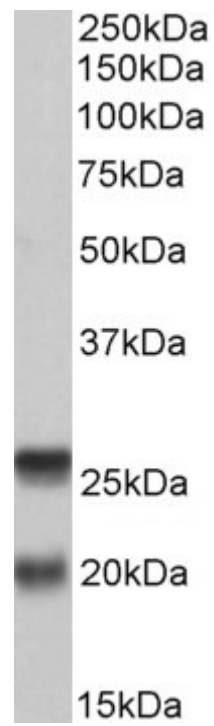
**Peptide ELISA:** antibody detection limit dilution 1:2000.

**Western blot:** Approx 20+26kDa bands observed in Human Peripheral Blood Mononucleocytes lysates (calculated MW of 17.8kDa according to NP\_570710.1 and of 23.4kDa according to NP\_003816.2). Recommended concentration: 0.2-0.6µg/ml.

### Species Reactivity

**Tested:** Human

**Expected from sequence similarity:** Human, Mouse, Rat, Dog, Cow



EB10231 (0.2µg/ml) staining of PBMC lysate (35µg protein in RIPA buffer). Primary incubation was 1 hour.  
Detected by chemiluminescence.