

UK Office

Everest Biotech Ltd

Cherwell Innovation Centre
77 Heyford Park
Upper Heyford
Oxfordshire
OX25 5HD
UK

Enquiries:

info@everestbiotech.com

Sales:

sales@everestbiotech.com

Tech support:

support@everestbiotech.com

Tel: +44 (0)1869 238326

www.everestbiotech.com

**Research Use Only. Not for
diagnostic or therapeutic use.**

EB10232 - Goat Anti-SNAP23 Antibody

Size: 100µg specific antibody in 200µl



Target Protein

Principal Names: HsT17016, OTTHUMP00000161263, SNAP23A, SNAP23B, synaptosomal-associated protein 23, synaptosomal-associated protein, 23kDa, SNAP23

Official Symbol: SNAP23

Accession Number(s): NP_003816.2; NP_570710.1

Human GeneID(s): [8773](#)

Non-Human GeneID(s): 20619 (mouse), 64630 (rat)

Important Comments: This antibody is expected to recognize both reported isoforms (NP_003816.2; NP_570710.1).

Immunogen

Peptide with sequence C-QIKRITDKAD, from the internal region of the protein sequence according to NP_003816.2; NP_570710.1.

Please note the [peptide](#) is available for sale.

Purification and Storage

Purified from goat serum by ammonium sulphate precipitation followed by antigen affinity chromatography using the immunizing peptide.

Supplied at 0.5 mg/ml in Tris saline, 0.02% sodium azide, pH7.3 with 0.5% bovine serum albumin.

Aliquot and store at -20°C. Minimize freezing and thawing.

Applications Tested

Peptide ELISA: antibody detection limit dilution 1:8000.

Western blot: Approx 26kDa band observed in Human Placenta lysates (calculated MW of 23.4kDa according to NP_003816.2). This molecular weight is routinely observed by other sources. Recommended concentration: 0.1-0.3µg/ml. Primary incubation was 1 hour.

IHC: Paraffin embedded Spleen. Recommended concentration: 3.75µg/ml.

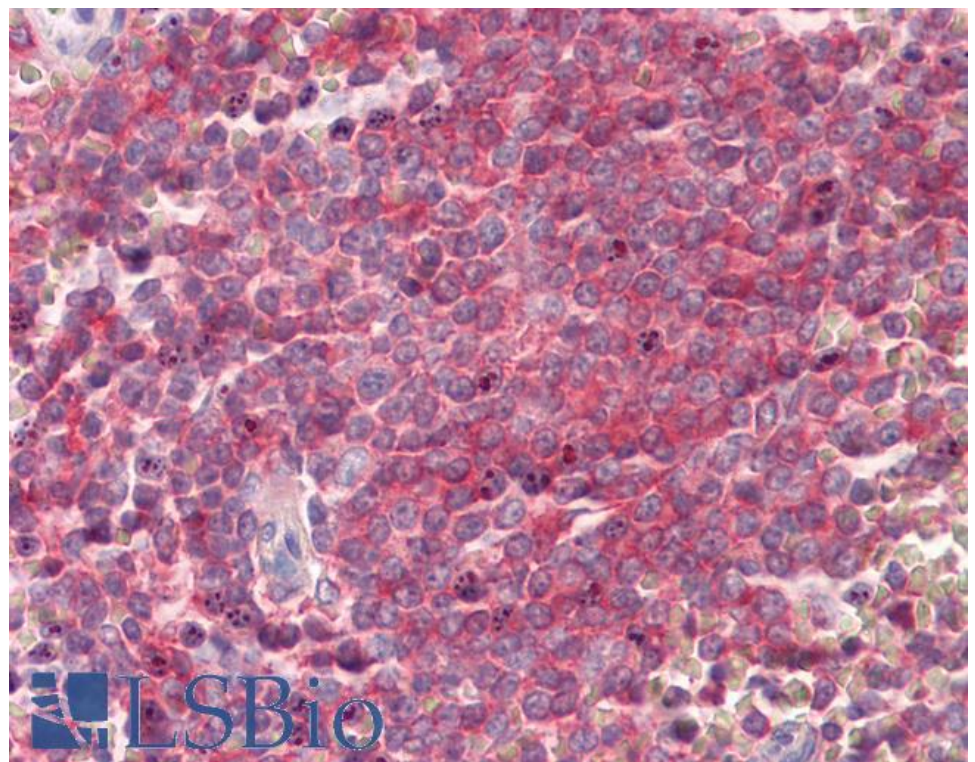
Species Reactivity

Tested: Human

Expected from sequence similarity: Human, Mouse, Rat, Cow



EB10232 (0.1 μ g/ml) staining of Human Placenta lysate (35 μ g protein in RIPA buffer). Detected by chemiluminescence.



EB10232 (3.75 μ g/ml) staining of paraffin embedded Human Spleen. Steamed antigen retrieval with citrate buffer pH 6, AP-staining.