



UK Office

Everest Biotech Ltd

Cherwell Innovation Centre
77 Heyford Park
Upper Heyford
Oxfordshire
OX25 5HD
UK

Enquiries:

info@everestbiotech.com

Sales:

sales@everestbiotech.com

Tech support:

support@everestbiotech.com

Tel: +44 (0)1869 238326

Fax: +44 (0)1869 238327

US Office

Everest Biotech c/o Abcore

405 Maple Street, Suite A106
Ramona,
CA 92065
USA

Inquiries:

info@everestbiotech.com

Sales:

usasales@everestbiotech.com

Tech support:

support@everestbiotech.com

Tel: 888-320-4628 (toll-free)

Fax: 888-841-9041

www.everestbiotech.com

**Research Use Only. Not for
diagnostic or therapeutic use.**

EB06738-B - Goat Anti-SNAP25, Biotinylated Antibody

Size: 100µg specific antibody in 200µl



Target Protein

Principal Names: SNAP25, synaptosome associated protein 25kDa, CMS18, RIC-4, RIC4, SEC9, SNAP, SNAP-25, SUP, bA416N4.2, dJ1068F16.2, resistance to inhibitors of cholinesterase 4 homolog, synaptosomal-associated protein, 25kDa

Official Symbol: SNAP25

Accession Number(s): NP_003072.2; NP_570824.1

Human GeneID(s): [6616](#)

Non-Human GeneID(s): 20614 (mouse), 25012 (rat)

Important Comments: This antibody is expected to recognise both reported isoforms NP_003072.2 (SNAP25A) and NP_570824.1 (SNAP25B). Reported variants represent identical protein: NP_001309831.1, NP_003072.2 Reported variants represent identical protein: NP_001309834.1, NP_001309832.1, NP_001309833.1, NP_001309839.1, NP_001309836.1, NP_570824.1, NP_001309838.1, NP_001309835.1, NP_001309837.1

Immunogen

Peptide with sequence C-DEANQRATKMLGSG., from the C Terminus of the protein sequence according to NP_003072.2; NP_570824.1.

Please note the [peptide](#) is available for sale.

Purification and Storage

Purified from goat serum by ammonium sulphate precipitation followed by antigen affinity chromatography using the immunizing peptide.

Supplied at 0.5 mg/ml in Tris saline, 0.02% sodium azide, pH7.3 with 0.5% bovine serum albumin.

Aliquot and store at -20°C. Minimize freezing and thawing.

Applications Tested

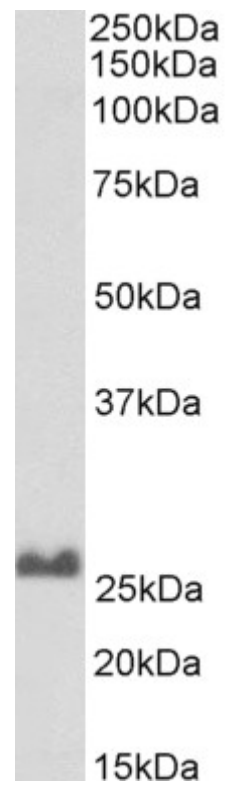
Peptide ELISA: antibody detection limit dilution 1:64000.

Western blot: Approx 26kDa band observed in Rat Brain lysates (calculated MW of 23.3kDa according to NP_003072.2 and NP_570824.1). See non-biotinylated parental product's datasheet for further QC data. Recommended concentration: 0.1-0.3µg/ml.

Species Reactivity

Tested: Human, Mouse, Rat

Expected from sequence similarity: Human, Mouse, Rat, Dog



Biotinylated EB06738 (0.1µg/ml) staining of Rat Brain lysate (35µg protein in RIPA buffer), exactly mirroring its parental non-biotinylated product. Primary incubation was 1 hour. Detected by chemiluminescence, using streptavidin-HRP and using NAP blocker as a substitute for skimmed milk.