



## UK Office

### Everest Biotech Ltd

Cherwell Innovation Centre  
77 Heyford Park  
Upper Heyford  
Oxfordshire  
OX25 5HD  
UK

Enquiries:

[info@everestbiotech.com](mailto:info@everestbiotech.com)

Sales:

[sales@everestbiotech.com](mailto:sales@everestbiotech.com)

Tech support:

[support@everestbiotech.com](mailto:support@everestbiotech.com)

Tel: +44 (0)1869 238326

Fax: +44 (0)1869 238327

## US Office

### Everest Biotech c/o Abcore

405 Maple Street, Suite A106  
Ramona,  
CA 92065  
USA

Inquiries:

[info@everestbiotech.com](mailto:info@everestbiotech.com)

Sales:

[usasales@everestbiotech.com](mailto:usasales@everestbiotech.com)

Tech support:

[support@everestbiotech.com](mailto:support@everestbiotech.com)

Tel: 888-320-4628 (toll-free)

Fax: 888-841-9041

[www.everestbiotech.com](http://www.everestbiotech.com)

**Research Use Only. Not for  
diagnostic or therapeutic use.**

## EB07382 - Goat Anti-SNX26 / TCGAP (N Terminus) Antibody

Size: 100µg specific antibody in 200µl



### Target Protein

**Principal Names:** SNX26, TCGAP, sorting nexin 26, FLJ39019

**Official Symbol:** SNX26

**Accession Number(s):** NP\_443180.2

**Human GenelD(s):** [115703](#)

### Immunogen

Peptide with sequence ARSTDSLDGPGE-C, from the N Terminus of the protein sequence according to NP\_443180.2.

Please note the [peptide](#) is available for sale.

### Purification and Storage

Purified from goat serum by ammonium sulphate precipitation followed by antigen affinity chromatography using the immunizing peptide.

Supplied at 0.5 mg/ml in Tris saline, 0.02% sodium azide, pH7.3 with 0.5% bovine serum albumin.

Aliquot and store at -20°C. Minimize freezing and thawing.

### Applications Tested

**Peptide ELISA:** antibody detection limit dilution 1:32000.

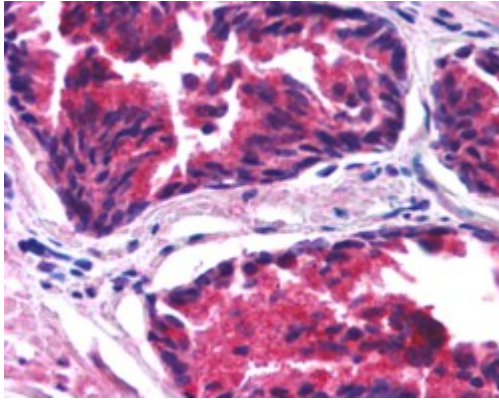
**Western blot:** Preliminary experiments gave an approx 35kDa band in human brain (hippocampus) lysates after 1µg/ml antibody staining. Please note that currently we cannot find an explanation in the literature for the band we observe given the calculated size of 121kDa according to NP\_443180.2. The 35kDa band was successfully blocked by incubation with the immunizing peptide. We would appreciate any feedback from people in the field - have any results been reported with other antibodies/lysates? Have any further splice variants/modified forms been reported?

**IHC:** In paraffin embedded Human Prostate shows cytoplasm staining of secretory cells in the glands. Recommended concentration, 1.25µg/ml.

### Species Reactivity

**Tested:** Human

**Expected from sequence similarity:** Human



EB07382 1.25µg/ml) staining of paraffin embedded human prostate. Steamed antigen retrieval with citrate buffer pH 6, AP-staining.