



UK Office

Everest Biotech Ltd

Cherwell Innovation Centre
77 Heyford Park
Upper Heyford
Oxfordshire
OX25 5HD
UK

Enquiries:

info@everestbiotech.com

Sales:

sales@everestbiotech.com

Tech support:

support@everestbiotech.com

Tel: +44 (0)1869 238326

Fax: +44 (0)1869 238327

US Office

Everest Biotech c/o Abcore

405 Maple Street, Suite A106
Ramona,
CA 92065
USA

Inquiries:

info@everestbiotech.com

Sales:

usasales@everestbiotech.com

Tech support:

support@everestbiotech.com

Tel: 888-320-4628 (toll-free)

Fax: 888-841-9041

www.everestbiotech.com

**Research Use Only. Not for
diagnostic or therapeutic use.**

EB06219 - Goat Anti-SNX8 Antibody

Size: 100µg specific antibody in 200µl



Target Protein

Principal Names: SNX8, sorting nexin 8, Mvp1

Official Symbol: SNX8

Accession Number(s): NP_037453.1

Human GeneID(s): [29886](#)

Immunogen

Peptide with sequence TPPCSPPEDGLCPH, from the C Terminus of the protein sequence according to NP_037453.1.

Please note the [peptide](#) is available for sale.

Purification and Storage

Purified from goat serum by ammonium sulphate precipitation followed by antigen affinity chromatography using the immunizing peptide.

Supplied at 0.5 mg/ml in Tris saline, 0.02% sodium azide, pH7.3 with 0.5% bovine serum albumin.

Aliquot and store at -20°C. Minimize freezing and thawing.

Applications Tested

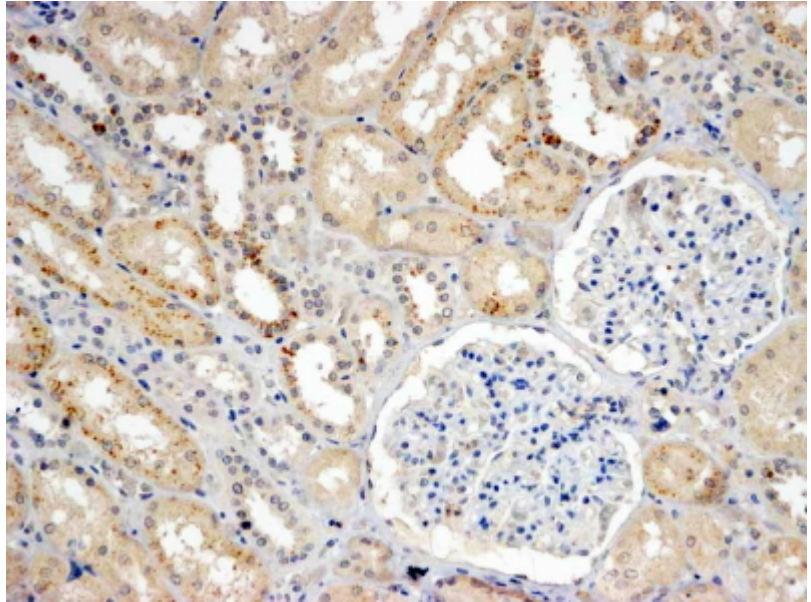
Peptide ELISA: antibody detection limit dilution 1:8000.

IHC: In paraffin embedded Human Kidney shows vesicular staining in the cytoplasm of preferentially DCT epithelial cells. Recommended concentration, 4-8µg/ml.

Species Reactivity

Tested: Human

Expected from sequence similarity: Human



EB06219 (4 μ g/ml) staining of paraffin embedded Human Kidney. Steamed antigen retrieval with Tris/EDTA buffer pH 9, HRP-staining.