



UK Office

Everest Biotech Ltd

Cherwell Innovation Centre
77 Heyford Park
Upper Heyford
Oxfordshire
OX25 5HD
UK

Enquiries:

info@everestbiotech.com

Sales:

sales@everestbiotech.com

Tech support:

support@everestbiotech.com

Tel: +44 (0)1869 238326

Fax: +44 (0)1869 238327

US Office

Everest Biotech c/o Abcore

405 Maple Street, Suite A106
Ramona,
CA 92065
USA

Inquiries:

info@everestbiotech.com

Sales:

usasales@everestbiotech.com

Tech support:

support@everestbiotech.com

Tel: 888-320-4628 (toll-free)

Fax: 888-841-9041

www.everestbiotech.com

**Research Use Only. Not for
diagnostic or therapeutic use.**

EB05040-B - Goat Anti-SOCS1, biotinylated Antibody

Size: 100µg specific antibody in 200µl



Target Protein

Principal Names: SOCS1, suppressor of cytokine signaling 1, CIS1, CISH1, JAB, SOCS-1, SSI-1, SSI1, TIP3, JAK binding protein, STAT induced SH3 protein 1, STAT-induced STAT inhibitor 1, TIP-3, Tec-interacting protein 3, cytokine-inducible SH2 protein 1

Official Symbol: SOCS1

Accession Number(s): NP_003736.1

Human GeneID(s): [8651](#)

Non-Human GeneID(s): 12703 (mouse)

Immunogen

Peptide with sequence C-VLRDYLSSFPFQI., from the C Terminus of the protein sequence according to NP_003736.1.

Please note the [peptide](#) is available for sale.

Purification and Storage

Purified from goat serum by ammonium sulphate precipitation followed by antigen affinity chromatography using the immunizing peptide.

Supplied at 0.5 mg/ml in Tris saline, 0.02% sodium azide, pH7.3 with 0.5% bovine serum albumin.

Aliquot and store at -20°C. Minimize freezing and thawing.

Applications Tested

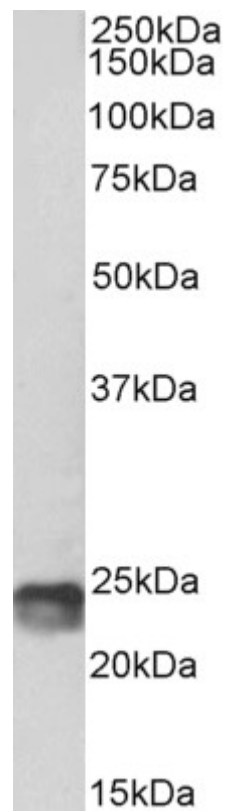
Peptide ELISA: antibody detection limit dilution 1:32000.

Western blot: Approx 24kDa band observed in Mouse Spleen lysates (calculated MW of 23.7kDa according to Mouse NP_034026.1). See non-biotinylated parental product's datasheet for further QC data. Recommended concentration: 1-3µg/ml.

Species Reactivity

Tested: Mouse, Human

Expected from sequence similarity: Human, Mouse, Rat, Dog, Cow



Biotinylated EB05040 (1µg/ml) staining of Mouse Spleen lysate (35µg protein in RIPA buffer). Primary incubation was 1 hour. Detected by chemiluminescence, using streptavidin-HRP and using NAP blocker as a substitute for skimmed milk.