



## UK Office

### Everest Biotech Ltd

Cherwell Innovation Centre  
77 Heyford Park  
Upper Heyford  
Oxfordshire  
OX25 5HD  
UK

Enquiries:

[info@everestbiotech.com](mailto:info@everestbiotech.com)

Sales:

[sales@everestbiotech.com](mailto:sales@everestbiotech.com)

Tech support:

[support@everestbiotech.com](mailto:support@everestbiotech.com)

Tel: +44 (0)1869 238326

Fax: +44 (0)1869 238327

## US Office

### Everest Biotech c/o Abcore

405 Maple Street, Suite A106  
Ramona,  
CA 92065  
USA

Inquiries:

[info@everestbiotech.com](mailto:info@everestbiotech.com)

Sales:

[usasales@everestbiotech.com](mailto:usasales@everestbiotech.com)

Tech support:

[support@everestbiotech.com](mailto:support@everestbiotech.com)

Tel: 888-320-4628 (toll-free)

Fax: 888-841-9041

[www.everestbiotech.com](http://www.everestbiotech.com)

**Research Use Only. Not for  
diagnostic or therapeutic use.**

## EB05455 - Goat Anti-SORBS1 / Ponsin (C Terminus) Antibody

Size: 100µg specific antibody in 200µl



### Target Protein

**Principal Names:** SORBS1, PONSIN, sorbin and SH3 domain containing 1, CAP, SH3D5, SORB1, SH3P12, ponsin, sh3p12, FLJ12406, KIAA1296, DKFZP586P1422, DKFZp451C066, SH3-domain protein 5 (ponsin), FLAF2, FLJ12406, R85FL, Fas-ligand associated factor 2, c-Cbl associated protein, DKFZp586P1422, OTTHUMP00000020142, OTTHUMP00000020143, OTTHUMP00000020144, OTTHUMP00000020145, ponsin

**Official Symbol:** SORBS1

**Accession Number(s):** NP\_006425.2; NP\_056200.1; NP\_001030126.1; NP\_001030127.1; NP\_001030128.1; NP\_079267.1; NP\_001030129.1

**Human GeneID(s):** [10580](#)

**Non-Human GeneID(s):** 20411 (mouse)

**Important Comments:** This antibody is expected to recognize all seven reported isoforms (NP\_006425.2, NP\_056200.1, NP\_001030126.1, NP\_001030127.1, NP\_001030128.1, NP\_079267.1 and NP\_001030129.1).

### Immunogen

Peptide with sequence C-GTFPGNYVKPLYL, from the C Terminus of the protein sequence according to NP\_006425.2; NP\_056200.1; NP\_001030126.1; NP\_001030127.1; NP\_001030128.1; NP\_079267.1; NP\_001030129.1.

Please note the [peptide](#) is available for sale.

### Purification and Storage

Purified from goat serum by ammonium sulphate precipitation followed by antigen affinity chromatography using the immunizing peptide.

Supplied at 0.5 mg/ml in Tris saline, 0.02% sodium azide, pH7.3 with 0.5% bovine serum albumin.

Aliquot and store at -20°C. Minimize freezing and thawing.

### Applications Tested

**Peptide ELISA:** antibody detection limit dilution 1:16000.

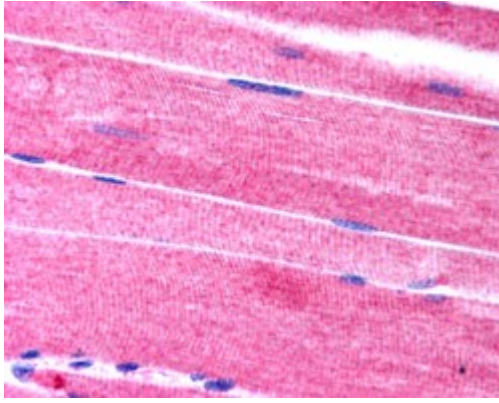
**Western blot:** No signal obtained yet but low background observed in Human Heart and 293 lysates at up to 2µg/ml.

**IHC:** Paraffin embedded Human Skeletal Muscle. Recommended concentration: 2.5µg/ml.

### Species Reactivity

**Tested:** Human

**Expected from sequence similarity:** Human, Mouse, Rat, Pig



EB05455 (2.5µg/ml) staining of paraffin embedded Human Skeletal Muscle. Steamed antigen retrieval with citrate buffer Ph 6, AP-staining.