



UK Office

Everest Biotech Ltd

Cherwell Innovation Centre
77 Heyford Park
Upper Heyford
Oxfordshire
OX25 5HD
UK

Enquiries:

info@everestbiotech.com

Sales:

sales@everestbiotech.com

Tech support:

support@everestbiotech.com

Tel: +44 (0)1869 238326

Fax: +44 (0)1869 238327

US Office

Everest Biotech c/o Abcore

405 Maple Street, Suite A106
Ramona,
CA 92065
USA

Inquiries:

info@everestbiotech.com

Sales:

usasales@everestbiotech.com

Tech support:

support@everestbiotech.com

Tel: 888-320-4628 (toll-free)

Fax: 888-841-9041

www.everestbiotech.com

**Research Use Only. Not for
diagnostic or therapeutic use.**

EB11123 - Goat Anti-SOX10 (aa204-217) Antibody

Size: 100µg specific antibody in 200µl



Target Protein

Principal Names: DOM, dominant megacolon, mouse, human homolog of, MGC15649, OTTHUMP00000195094, OTTHUMP00000195097, PCWH, SRY (sex determining region Y)-box 10, SRY-related HMG-box gene 10, transcription factor SOX-10, WS2E, WS4, WS4C, SOX10

Official Symbol: SOX10

Accession Number(s): NP_008872.1

Human GeneID(s): [6663](#)

Non-Human GeneID(s): 20665 (mouse), 29361 (rat)

Immunogen

Peptide with sequence C-QAHYKSAHLDHRHP, from the C or N Terminus of the protein sequence according to NP_008872.1.

Please note the [peptide](#) is available for sale.

Purification and Storage

Purified from goat serum by ammonium sulphate precipitation followed by antigen affinity chromatography using the immunizing peptide.

Supplied at 0.5 mg/ml in Tris saline, 0.02% sodium azide, pH7.3 with 0.5% bovine serum albumin.

Aliquot and store at -20°C. Minimize freezing and thawing.

Applications Tested

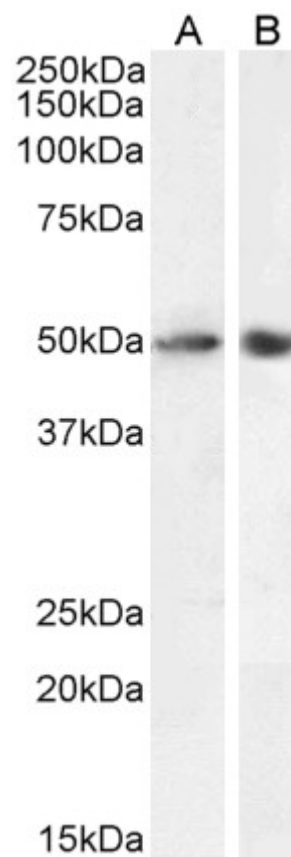
Peptide ELISA: antibody detection limit dilution 1:4000.

Western blot: Approx 50kDa band observed in Mouse and Rat Brain lysates (calculated MW of 49.9kDa according to Mouse NP_035567.1 and 50.0kDa according to Rat NP_062066.1). Recommended concentration: 0.3-0.5µg/ml. Primary incubation 1 hour at room temperature.

Species Reactivity

Tested: Mouse, Rat

Expected from sequence similarity: Human, Mouse, Rat, Dog, Pig, Cow



EB11123 (0.3µg/ml) staining of Mouse (A) and Rat (B) Brain lysate (35µg protein in RIPA buffer). Detected by chemiluminescence.