

UK Office

Everest Biotech Ltd

Cherwell Innovation Centre
77 Heyford Park
Upper Heyford
Oxfordshire
OX25 5HD
UK

Enquiries:

info@everestbiotech.com

Sales:

sales@everestbiotech.com

Tech support:

support@everestbiotech.com

Tel: +44 (0)1869 238326

www.everestbiotech.com

**Research Use Only. Not for
diagnostic or therapeutic use.**

EB08855 - Goat Anti-SOX10 Antibody

Size: 100µg specific antibody in 200µl



Target Protein

Principal Names: SOX10, SRY (sex determining region Y)-box 10, DOM, MGC15649, WS4, OTTHUMP00000028515, SRY-related HMG-box gene 10, dominant megacolon, mouse, human homolog of

Official Symbol: SOX10

Accession Number(s): NP_008872.1

Human GeneID(s): [6663](#)

Immunogen

Peptide with sequence C-DAKAQVKTETAGPQ, from the internal region of the protein sequence according to NP_008872.1.

Please note the [peptide](#) is available for sale.

Purification and Storage

Purified from goat serum by ammonium sulphate precipitation followed by antigen affinity chromatography using the immunizing peptide.

Supplied at 0.5 mg/ml in Tris saline, 0.02% sodium azide, pH7.3 with 0.5% bovine serum albumin.

Aliquot and store at -20°C. Minimize freezing and thawing.

Applications Tested

Peptide ELISA: antibody detection limit dilution 1:128000.

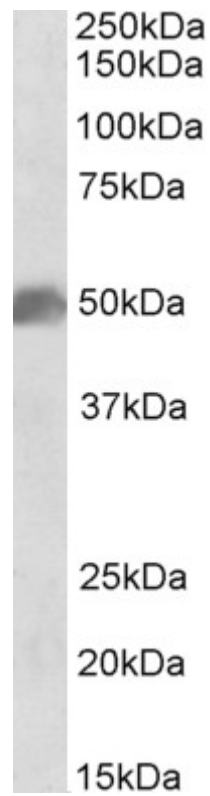
Western blot: Approx 50kDa band observed in Human Brain (Cerebellum) and approx. 52kDa in Mouse Brain lysates (calculated MW of 49.9kDa according to Human NP_008872.1 and Mouse NP_035567.1). Recommended concentration: 0.03-0.1µg/ml. Primary incubation 1 hour at room temperature.

Immunofluorescence: Strong expression of the protein seen in the nucleus of KNRK cells. Recommended concentration: 10µg/ml.

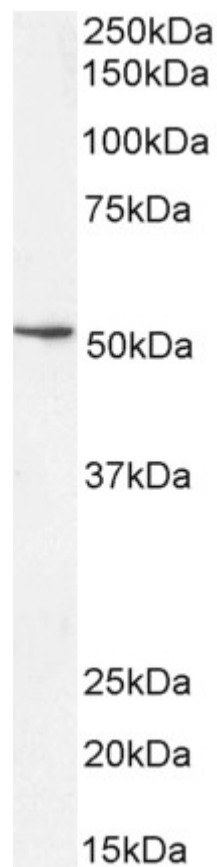
Species Reactivity

Tested: Human, Mouse, Rat

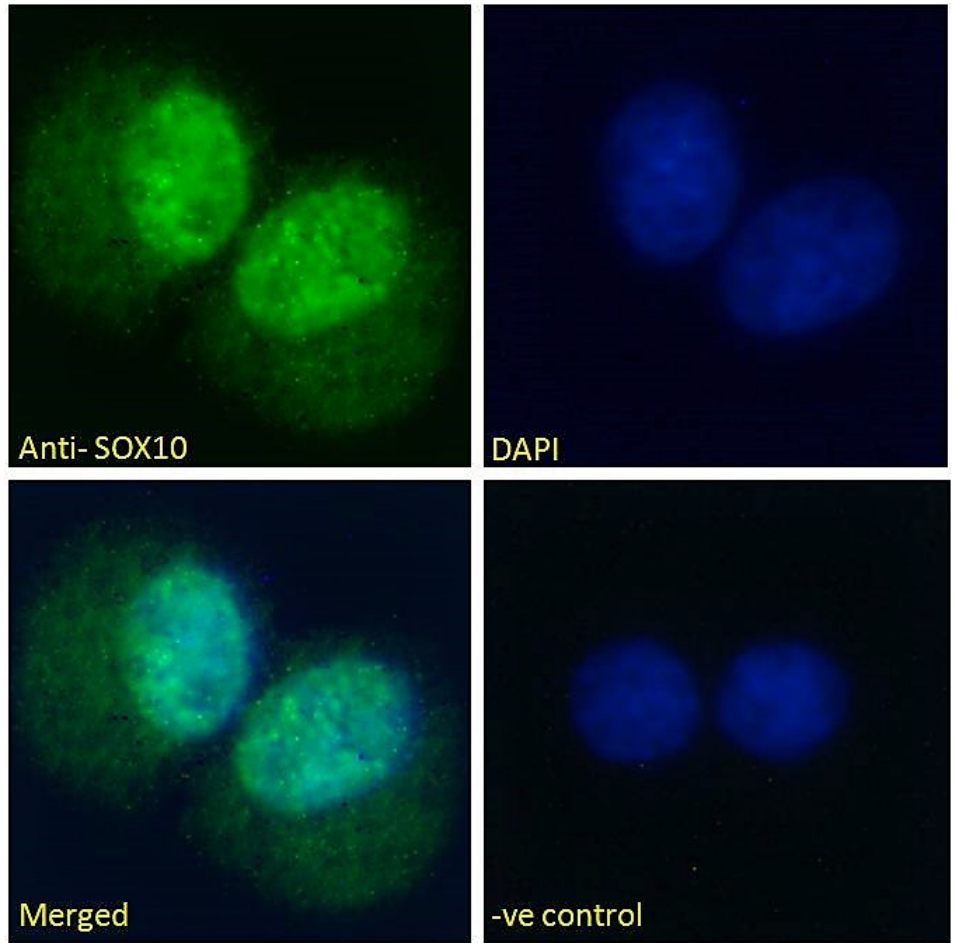
Expected from sequence similarity: Human, Mouse, Rat, Dog, Cow, Pig



EB08855 (0.1µg/ml) staining of Human Cerebellum lysate (35µg protein in RIPA buffer). Primary incubation was 1 hour. Detected by chemiluminescence.



EB08855 (0.1µg/ml) staining of Mouse Brain lysate (35µg protein in RIPA buffer). Detected by chemiluminescence.



EB08855 Immunofluorescence analysis of paraformaldehyde fixed KNRK cells, permeabilized with 0.15% Triton. Primary incubation 1hr (10ug/ml) followed by Alexa Fluor 488 secondary antibody (2ug/ml), showing nuclear staining. The nuclear stain is DAPI (blue). Negative control: Unimmunized goat IgG (10ug/ml) followed by Alexa Fluor 488 secondary antibody (2ug/ml).