



## UK Office

### Everest Biotech Ltd

Cherwell Innovation Centre  
77 Heyford Park  
Upper Heyford  
Oxfordshire  
OX25 5HD  
UK

Enquiries:

[info@everestbiotech.com](mailto:info@everestbiotech.com)

Sales:

[sales@everestbiotech.com](mailto:sales@everestbiotech.com)

Tech support:

[support@everestbiotech.com](mailto:support@everestbiotech.com)

Tel: +44 (0)1869 238326

Fax: +44 (0)1869 238327

## US Office

### Everest Biotech c/o Abcore

405 Maple Street, Suite A106  
Ramona,  
CA 92065  
USA

Inquiries:

[info@everestbiotech.com](mailto:info@everestbiotech.com)

Sales:

[usasales@everestbiotech.com](mailto:usasales@everestbiotech.com)

Tech support:

[support@everestbiotech.com](mailto:support@everestbiotech.com)

Tel: 888-320-4628 (toll-free)

Fax: 888-841-9041

[www.everestbiotech.com](http://www.everestbiotech.com)

**Research Use Only. Not for  
diagnostic or therapeutic use.**

## EB11231 - Goat Anti-SOX11 (aa309-323) Antibody

Size: 100µg specific antibody in 200µl



### Target Protein

**Principal Names:** SRY (sex determining region Y)-box 11, SRY (sex-determining region Y)-box 11, SRY-related HMG-box gene 11, transcription factor SOX-11, SOX11

**Official Symbol:** SOX11

**Accession Number(s):** NP\_003099.1

**Human GeneID(s):** [6664](#)

**Non-Human GeneID(s):** 20666 (mouse), 84046 (rat)

### Immunogen

Peptide with sequence C-SRLYYSFKNITKQHP, from the internal region of the protein sequence according to NP\_003099.1.

Please note the [peptide](#) is available for sale.

### Purification and Storage

Purified from goat serum by ammonium sulphate precipitation followed by antigen affinity chromatography using the immunizing peptide.

Supplied at 0.5 mg/ml in Tris saline, 0.02% sodium azide, pH7.3 with 0.5% bovine serum albumin.

Aliquot and store at -20°C. Minimize freezing and thawing.

### Applications Tested

**Peptide ELISA:** antibody detection limit dilution 1:2000.

**Western blot:** Approx 65kDa band observed in lysates of cell lines Daudi, Jurkat and MOLT4 (calculated MW of 46.7kDa according to NP\_003099.1). The observed molecular weight corresponds to earlier findings in literature with different antibodies (Dictor et al, Haematologica. 2009 Nov;94(11):1563-8. PMID: 19880779). Recommended concentration: 0.3-1µg/ml. Primary incubation was 1 hour. Preliminary testing was unsuccessful on NIH3T3, Mouse and Rat Brain for this particular batch.

### Species Reactivity

**Tested:** Human

**Expected from sequence similarity:** Human, Mouse, Rat, Pig, Cow

### Specific Reference

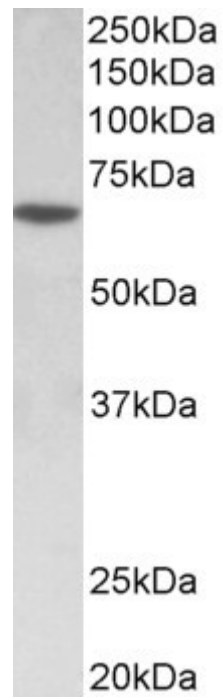
**This antibody has been successfully used in IHC on Mouse:**

Chen C, Jin J, Lee GA, Silva E, Donoghue M.

Cross-species functional analyses reveal shared and separate roles for Sox11 in frog primary neurogenesis and mouse cortical neuronal differentiation.

Biol Open. 2016 Apr 15;5(4):409-17

PMID: 26962049



EB11231 (0.5 $\mu$ g/ml) staining of MOLT4 lysate (35 $\mu$ g protein in RIPA buffer). Detected by chemiluminescence.