

UK Office

Everest Biotech Ltd

Cherwell Innovation Centre
77 Heyford Park
Upper Heyford
Oxfordshire
OX25 5HD
UK

Enquiries:

info@everestbiotech.com

Sales:

sales@everestbiotech.com

Tech support:

support@everestbiotech.com

Tel: +44 (0)1869 238326

www.everestbiotech.com

**Research Use Only. Not for
diagnostic or therapeutic use.**

EB09825 - Goat Anti-SPAG16 Antibody

Size: 100µg specific antibody in 200µl



Target Protein

Principal Names: DKFZp666P1710, FLJ22724, FLJ37717, MGC87036, PF20, sperm associated antigen 16, sperm-associated WD repeat protein, WD repeat domain 29, WDR29, SPAG16

Official Symbol: SPAG16

Accession Number(s): NP_078808.3

Human GeneID(s): [79582](#)

Non-Human GeneID(s): 66722 (mouse)

Important Comments: This antibody is expected to recognize isoform 1 (NP_078808.3) only.

Immunogen

Peptide with sequence C-KLHYASYEPTIR, from the internal region of the protein sequence according to NP_078808.3.

Please note the [peptide](#) is available for sale.

Purification and Storage

Purified from goat serum by ammonium sulphate precipitation followed by antigen affinity chromatography using the immunizing peptide.

Supplied at 0.5 mg/ml in Tris saline, 0.02% sodium azide, pH7.3 with 0.5% bovine serum albumin.

Aliquot and store at -20°C. Minimize freezing and thawing.

Applications Tested

Peptide ELISA: antibody detection limit dilution 1:32000.

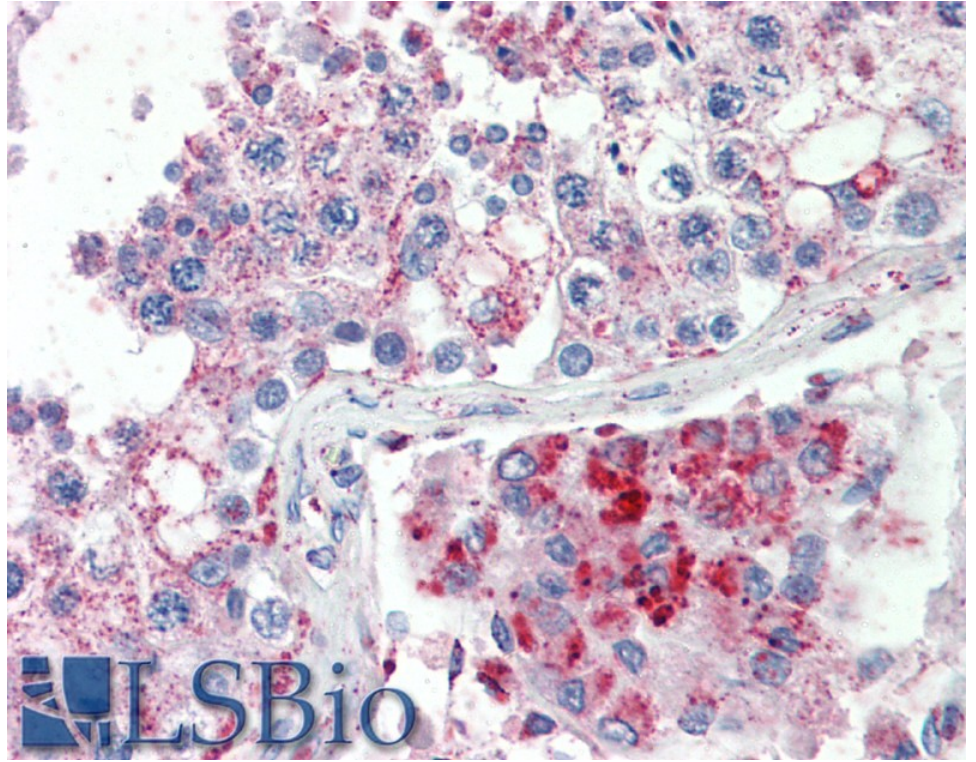
Western blot: Preliminary experiments gave bands at approx 55kDa and 22kDa in Human Testis lysates after 0.3µg/ml antibody staining. Please note that currently we cannot find an explanation in the literature for the bands we observe given the calculated size of 70.8kDa according to NP_078808.3. Both detected bands were successfully blocked by incubation with the immunizing peptide (and BLAST results with the immunizing peptide sequence did not identify any other proteins to explain the additional bands).

IHC: Paraffin embedded Human Testis. Recommended concentration: 5µg/ml.

Species Reactivity

Tested: Human

Expected from sequence similarity: Human, Mouse, Dog, Cow



EB09825 (5µg/ml) staining of paraffin embedded Human Testis. Steamed antigen retrieval with citrate buffer pH 6, AP-staining.