



## UK Office

### Everest Biotech Ltd

Cherwell Innovation Centre  
77 Heyford Park  
Upper Heyford  
Oxfordshire  
OX25 5HD  
UK

Enquiries:

[info@everestbiotech.com](mailto:info@everestbiotech.com)

Sales:

[sales@everestbiotech.com](mailto:sales@everestbiotech.com)

Tech support:

[support@everestbiotech.com](mailto:support@everestbiotech.com)

Tel: +44 (0)1869 238326

Fax: +44 (0)1869 238327

## US Office

### Everest Biotech c/o Abcore

405 Maple Street, Suite A106  
Ramona,  
CA 92065  
USA

Inquiries:

[info@everestbiotech.com](mailto:info@everestbiotech.com)

Sales:

[usasales@everestbiotech.com](mailto:usasales@everestbiotech.com)

Tech support:

[support@everestbiotech.com](mailto:support@everestbiotech.com)

Tel: 888-320-4628 (toll-free)

Fax: 888-841-9041

[www.everestbiotech.com](http://www.everestbiotech.com)

**Research Use Only. Not for  
diagnostic or therapeutic use.**

## EB08409 - Goat Anti-SPHK1 Antibody

Size: 100µg specific antibody in 200µl



### Target Protein

**Principal Names:** SPHK1, sphingosine kinase 1, SPHK, SK1, SKase

**Official Symbol:** SPHK1

**Accession Number(s):** NP\_068807.2; NP\_892010.2; NP\_001136073.1

**Human GeneID(s):** [8877](#)

**Non-Human GeneID(s):** 20698 (mouse), 170897 (rat)

**Important Comments:** This antibody is expected to recognise all three reported isoforms (NP\_068807.2; NP\_892010.2; NP\_001136073.1). Reported variants represent identical protein (NP\_001136073.1; NP\_001136074.1).

### Immunogen

Peptide with sequence C-DVDLESEKYRRLGE, from the internal region of the protein sequence according to NP\_068807.2; NP\_892010.2; NP\_001136073.1.

Please note the [peptide](#) is available for sale.

### Purification and Storage

Purified from goat serum by ammonium sulphate precipitation followed by antigen affinity chromatography using the immunizing peptide.

Supplied at 0.5 mg/ml in Tris saline, 0.02% sodium azide, pH7.3 with 0.5% bovine serum albumin.

Aliquot and store at -20°C. Minimize freezing and thawing.

### Applications Tested

**Peptide ELISA:** antibody detection limit dilution 1:16000.

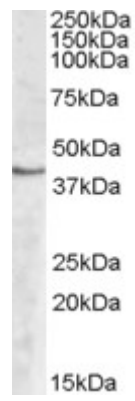
**Western blot:** Approx. 40 kDa band observed in Human Peripheral Blood Mononucleocyte lysates (calculated MW of 43.9 kDa according to NP\_068807.2).  
Recommended concentration: 2-3µg/ml.

**Immunoprecipitation:** EB05266 has been used in nuclear lysates of HeLa cells and a band of ~45kDa band has been detected.

### Species Reactivity

**Tested:** Human

**Expected from sequence similarity:** Human, Mouse, Rat, Dog, Cow



EB08409 (2µg/ml) staining of Human Peripheral Blood Mononucleocyte lysate (35µg protein in RIPA buffer).  
Primary incubation was 1 hour. Detected by chemiluminescence.