



UK Office

Everest Biotech Ltd
Cherwell Innovation Centre
77 Heyford Park
Upper Heyford
Oxfordshire
OX25 5HD
UK

Enquiries:

info@everestbiotech.com

Sales:

sales@everestbiotech.com

Tech support:

support@everestbiotech.com

Tel: +44 (0)1869 238326

Fax: +44 (0)1869 238327

US Office

Everest Biotech c/o Abcore
405 Maple Street, Suite A106
Ramona,
CA 92065
USA

Inquiries:

info@everestbiotech.com

Sales:

usasales@everestbiotech.com

Tech support:

support@everestbiotech.com

Tel: 888-320-4628 (toll-free)

Fax: 888-841-9041

www.everestbiotech.com

**Research Use Only. Not for
diagnostic or therapeutic use.**

EB06432 - Goat Anti-Sprouty Antibody

Size: 100µg specific antibody in 200µl



Target Protein

Principal Names: SPRY1, hSPRY1, sprouty homolog 1, antagonist of FGF signaling (Drosophila), sprouty (Drosophila) homolog 1 (antagonist of FGF signaling), sprouty, Drosophila, homolog of, 1 (antagonist of FGF signaling)

Official Symbol: SPRY1

Accession Number(s): NP_005832.1; NP_955359.1

Human GeneID(s): [10252](#)

Important Comments: NP_005832.1 and NP_955359.1 represent variants of the same protein.

Immunogen

Peptide with sequence CPSRGQGKPS, from the C Terminus of the protein sequence according to NP_005832.1; NP_955359.1.

Please note the [peptide](#) is available for sale.

Purification and Storage

Purified from goat serum by ammonium sulphate precipitation followed by antigen affinity chromatography using the immunizing peptide.

Supplied at 0.5 mg/ml in Tris saline, 0.02% sodium azide, pH7.3 with 0.5% bovine serum albumin.

Aliquot and store at -20°C. Minimize freezing and thawing.

Applications Tested

Peptide ELISA: antibody detection limit dilution 1:16000.

Western blot: Approx 37kDa band observed in Human Kidney lysates (calculated MW of 35.1kDa according to NP_005832.1). Recommended concentration: 0.3-1µg/ml. Primary incubation 1 hour at room temperature. This product has been successfully used in ERMS cells (PMID: 20068162). Recommended concentration: 1-3µg/ml.

IHC: This product has been successfully used by customers in paraffin embedded Mouse Brain, showing nuclear staining. Recommended concentration: 1-3µg/ml.

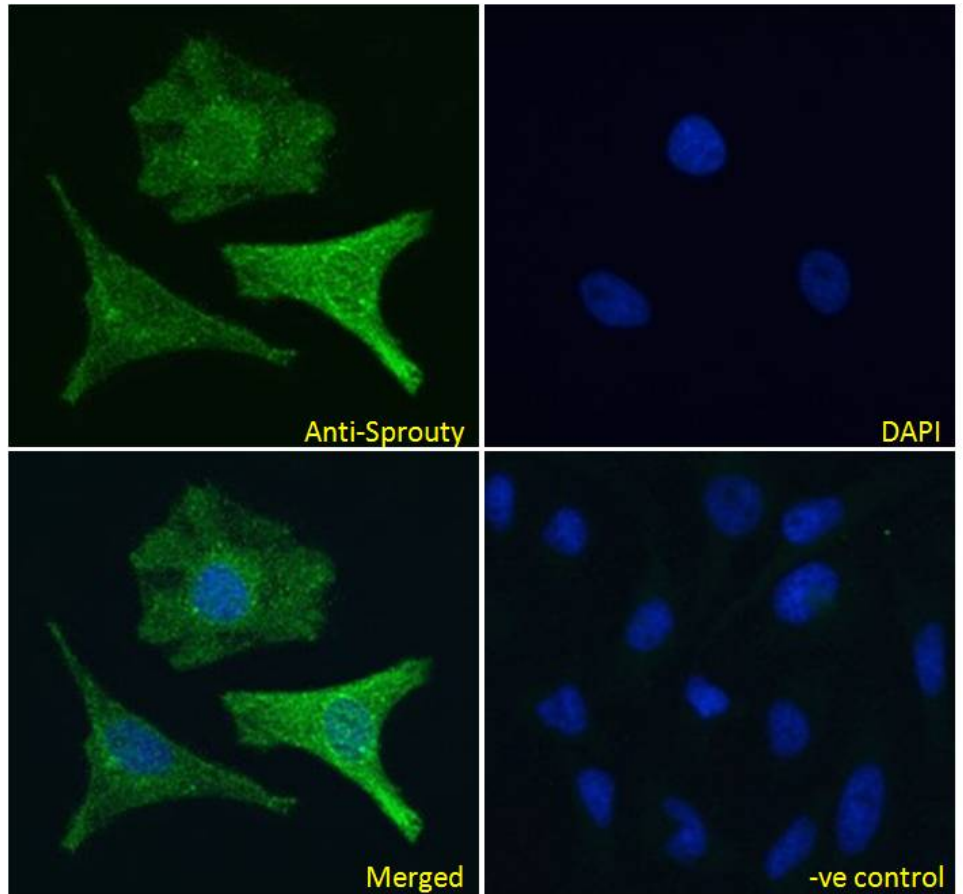
Immunofluorescence: Strong expression of the protein seen in the cytoplasm and Golgi apparatus of HeLa and HepG2 cells. Recommended concentration: 10µg/ml.

Flow Cytometry: Flow cytometric analysis of HEK293 cells. Recommended concentration: 10ug/ml.

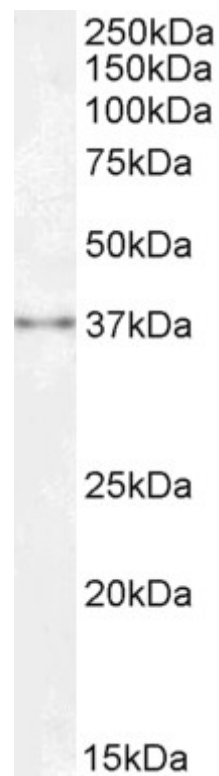
Species Reactivity

Tested: Human, Mouse

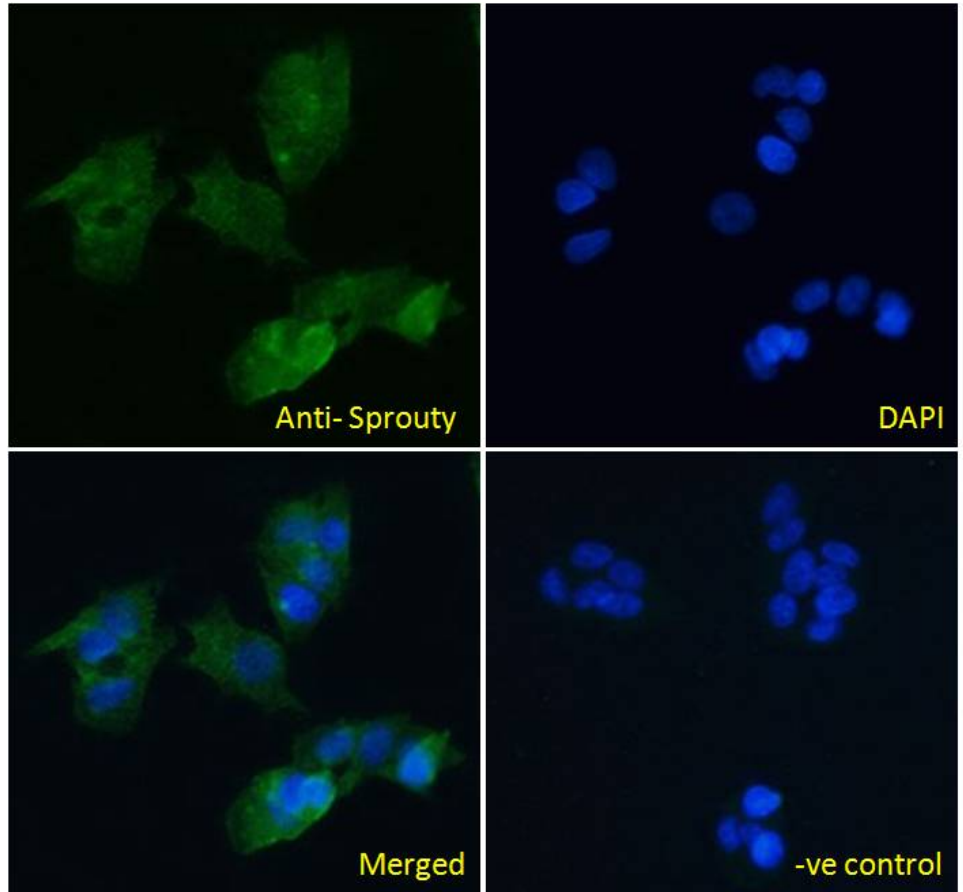
Expected from sequence similarity: Human



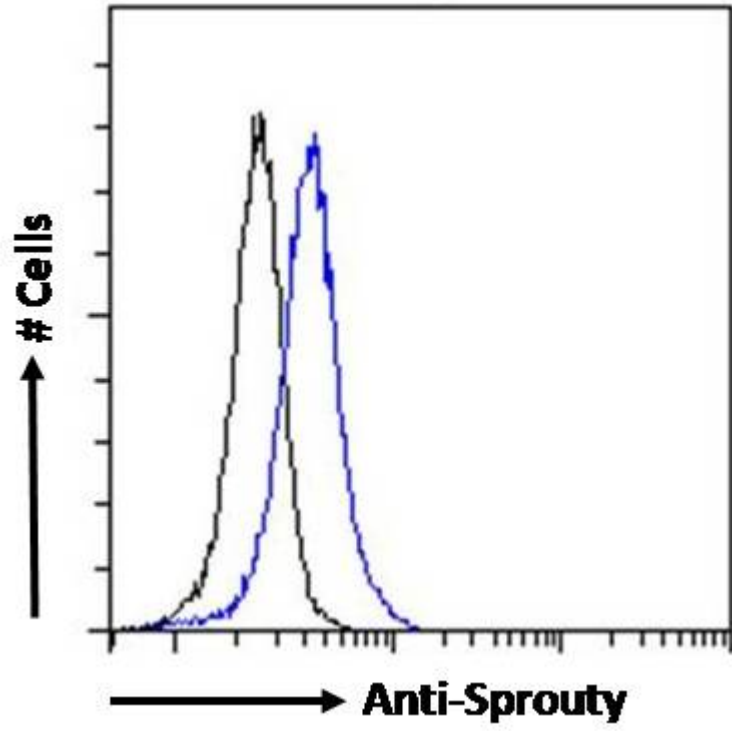
EB06432 Immunofluorescence analysis of paraformaldehyde fixed HeLa cells, permeabilized with 0.15% Triton. Primary incubation 1hr (10ug/ml) followed by Alexa Fluor 488 secondary antibody (4ug/ml), showing cytoplasmic and Golgi apparatus staining. The nuclear stain is DAPI (blue). Negative control: Unimmunized goat IgG (10ug/ml) followed by Alexa Fluor 488 secondary antibody (4ug/ml).



EB06432 (0.3µg/ml) staining of Human Kidney lysate (35µg protein in RIPA buffer). Detected by chemiluminescence.



EB06432 Immunofluorescence analysis of paraformaldehyde fixed HepG2 cells, permeabilized with 0.15% Triton. Primary incubation 1hr (10ug/ml) followed by Alexa Fluor 488 secondary antibody (4ug/ml), showing cytoplasmic and Golgi apparatus staining. The nuclear stain is DAPI (blue). Negative control: Unimmunized goat IgG (10ug/ml) followed by Alexa Fluor 488 secondary antibody (4ug/ml).



EB06432 Flow cytometric analysis of paraformaldehyde fixed HEK293 cells (blue line), permeabilized with 0.5% Triton. Primary incubation 1hr (10ug/ml) followed by Alexa Fluor 488 secondary antibody (0.4ug/ml). IgG control: Unimmunized goat IgG (black line) followed by Alexa Fluor 488 secondary antibody.