

UK Office

Everest Biotech Ltd

Cherwell Innovation Centre
77 Heyford Park
Upper Heyford
Oxfordshire
OX25 5HD
UK

Enquiries:

info@everestbiotech.com

Sales:

sales@everestbiotech.com

Tech support:

support@everestbiotech.com

Tel: +44 (0)1869 238326

www.everestbiotech.com

**Research Use Only. Not for
diagnostic or therapeutic use.**

EB11094 - Goat Anti-SRCAP (aa309-322) Antibody

Size: 100µg specific antibody in 200µl



Target Protein

Principal Names: domino homolog 1, domino homolog 2, DOMO1, EAF1, FLJ44499, helicase SRCAP, KIAA0309, OTTHUMP00000208671, Snf2-related CBP activator protein, Snf2-related CREBBP activator protein, Swi2/Snf2-related ATPase homolog, domino homolog 1, SWR1, SRCAP

Official Symbol: SRCAP

Accession Number(s): NP_006653.2

Human GeneID(s): [10847](#)

Non-Human GeneID(s): 100043597 (mouse), 361652 (rat)

Immunogen

Peptide with sequence C-QEGNDAEAGRREIE, from the internal region (near N Trminus) of the protein sequence according to NP_006653.2.

Please note the [peptide](#) is available for sale.

Purification and Storage

Purified from goat serum by ammonium sulphate precipitation followed by antigen affinity chromatography using the immunizing peptide.

Supplied at 0.5 mg/ml in Tris saline, 0.02% sodium azide, pH7.3 with 0.5% bovine serum albumin.

Aliquot and store at -20°C. Minimize freezing and thawing.

Applications Tested

Peptide ELISA: antibody detection limit dilution 1:128000.

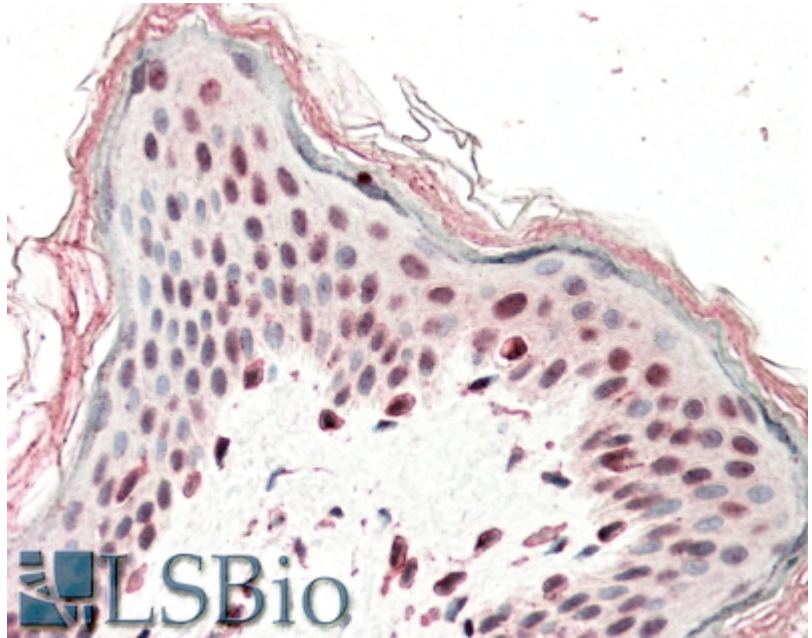
IHC: In paraffin embedded Human Skin shows nuclear staining in some keratinocytes.

Recommended concentration: 5-10µg/ml.

Species Reactivity

Tested: Human

Expected from sequence similarity: Human, Mouse, Rat, Dog, Pig



EB11094 (5µg/ml) staining of paraffin embedded Human Skin. Steamed antigen retrieval with citrate buffer pH 6, AP-staining.