



Everest Biotech Ltd
Cherwell Innovation Centre
77 Heyford Park
Upper Heyford
Oxfordshire
OX25 5HD, United Kingdom

everestbiotech.com

sales@everestbiotech.com

support@everestbiotech.com

Tel +44 1869 238326

Fax +44 1869 238327

Research Use Only. Not for diagnostic or therapeutic use.

Storage: For long-term storage keep aliquots at -20°C. (Store no longer than 12 months at 4°C). Minimize freezing and thawing.

EB06638 - Goat Anti-SRD5A1 / 5-alpha reductase 1 Antibody

Size: 100µg specific antibody in 200µl



Target Protein

Principal Names: steroid-5-alpha-reductase 1, 3-oxo-5 alpha-steroid delta 4-dehydrogenase alpha 1, steroid 5-alpha-reductase type I, 5-alpha reductase, steroid-5-alpha-reductase, alpha polypeptide 1 (3-oxo-5 alpha-steroid delta 4-dehydrogenase alpha 1), SRD5A1

Official Symbol: SRD5A1

Accession Number(s): NP_001038.1

Human GeneID(s): [6715](#)

Immunogen

Peptide with sequence ATATGVAEERLLC, from the N Terminus of the protein sequence according to NP_001038.1.

Please note the [peptide](#) is available for sale.

Purification and Storage

Purified from goat serum by ammonium sulphate precipitation followed by antigen affinity chromatography using the immunizing peptide.

Supplied at 0.5 mg/ml in Tris saline, 0.02% sodium azide, pH7.3 with 0.5% bovine serum albumin.

Aliquot and store at -20°C. Minimize freezing and thawing.

Applications Tested

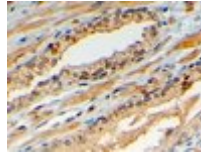
Peptide ELISA: antibody detection limit dilution 1:64000.

IHC: In paraffin embedded Human Prostate shows reticulate staining in the cytoplasm of secretory cells in the gland. Recommended concentration, 4-6µg/ml.

Species Reactivity

Tested: Human

Expected from sequence similarity: Human



EB06638 (4µg/ml) staining of paraffin embedded Human Prostate. Steamed antigen retrieval with citrate buffer pH 6, HRP-staining.