



## UK Office

### Everest Biotech Ltd

Cherwell Innovation Centre  
77 Heyford Park  
Upper Heyford  
Oxfordshire  
OX25 5HD  
UK

Enquiries:

[info@everestbiotech.com](mailto:info@everestbiotech.com)

Sales:

[sales@everestbiotech.com](mailto:sales@everestbiotech.com)

Tech support:

[support@everestbiotech.com](mailto:support@everestbiotech.com)

Tel: +44 (0)1869 238326

[www.everestbiotech.com](http://www.everestbiotech.com)

**Research Use Only. Not for  
diagnostic or therapeutic use.**

## EB09208 - Goat Anti-SRD5A2 Antibody

Size: 100µg specific antibody in 200µl



### Target Protein

**Principal Names:** SRD5A2, steroid 5 alpha-reductase 2, 5ART2, steroid 5 alpha reductase type2, 3-oxo-5 alpha-steroid 4-dehydrogenase 2

**Official Symbol:** SRD5A2

**Accession Number(s):** NP\_000339.2

**Human GeneID(s):** [6716](#)

**Non-Human GeneID(s):** 64677 (rat)

### Immunogen

Peptide with sequence C-KMFEDYPKSRK, from the C Terminus of the protein sequence according to NP\_000339.2.

Please note the [peptide](#) is available for sale.

### Purification and Storage

Purified from goat serum by ammonium sulphate precipitation followed by antigen affinity chromatography using the immunizing peptide.

Supplied at 0.5 mg/ml in Tris saline, 0.02% sodium azide, pH7.3 with 0.5% bovine serum albumin.

Aliquot and store at -20°C. Minimize freezing and thawing.

### Applications Tested

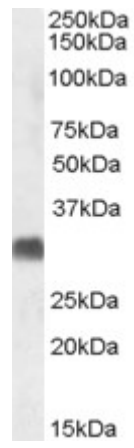
**Peptide ELISA:** antibody detection limit dilution 1:16000.

**Western blot:** Approx. 29kDa band observed in Human Testis lysates (calculated MW of 28.4kDa according to NP\_000339.2). Recommended concentration: 1-3µg/ml.

### Species Reactivity

**Tested:** Human

**Expected from sequence similarity:** Human, Rat, Dog, Pig



EB09208 (1µg/ml) staining of Human Testis lysate (35µg protein in RIPA buffer). Primary incubation was 1 hour.  
Detected by chemiluminescence.