



## UK Office

### Everest Biotech Ltd

Cherwell Innovation Centre  
77 Heyford Park  
Upper Heyford  
Oxfordshire  
OX25 5HD  
UK

Enquiries:

[info@everestbiotech.com](mailto:info@everestbiotech.com)

Sales:

[sales@everestbiotech.com](mailto:sales@everestbiotech.com)

Tech support:

[support@everestbiotech.com](mailto:support@everestbiotech.com)

Tel: +44 (0)1869 238326

Fax: +44 (0)1869 238327

## US Office

### Everest Biotech c/o Abcore

405 Maple Street, Suite A106  
Ramona,  
CA 92065  
USA

Inquiries:

[info@everestbiotech.com](mailto:info@everestbiotech.com)

Sales:

[usasales@everestbiotech.com](mailto:usasales@everestbiotech.com)

Tech support:

[support@everestbiotech.com](mailto:support@everestbiotech.com)

Tel: 888-320-4628 (toll-free)

Fax: 888-841-9041

[www.everestbiotech.com](http://www.everestbiotech.com)

**Research Use Only. Not for  
diagnostic or therapeutic use.**

## EB09543 - Goat Anti-SRF Antibody

Size: 100µg specific antibody in 200µl



### Target Protein

**Principal Names:** SRF, serum response factor (c-fos serum response element-binding transcription factor), MCM1, OTTHUMP00000039820

**Official Symbol:** SRF

**Accession Number(s):** NP\_003122.1

**Human GeneID(s):** [6722](#)

**Non-Human GeneID(s):** 20807 (mouse), 501099 (rat)

### Immunogen

Peptide with sequence C-QASPSRDSSTDLTQ, from the internal region of the protein sequence according to NP\_003122.1.

Please note the [peptide](#) is available for sale.

### Purification and Storage

Purified from goat serum by ammonium sulphate precipitation followed by antigen affinity chromatography using the immunizing peptide.

Supplied at 0.5 mg/ml in Tris saline, 0.02% sodium azide, pH7.3 with 0.5% bovine serum albumin.

Aliquot and store at -20°C. Minimize freezing and thawing.

### Applications Tested

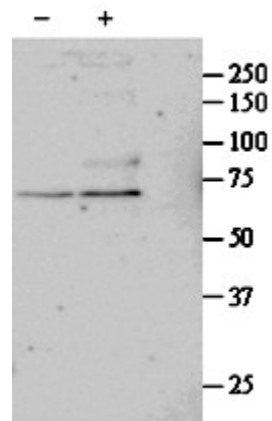
**Peptide ELISA:** antibody detection limit dilution 1:32000.

**Western blot:** Approx 67kDa band observed in primary cultured Human Lung fibroblasts lysates after 24 h treatment with 1ng/ml TGF-β1 (calculated MW of 51.6kDa according to NP\_003122.1). The observed molecular weight corresponds to earlier findings in literature with different antibodies (Davis FJ et al, Am J Physiol Heart Circ Physiol. 2002 Apr;282(4):H1521-33.; PMID: 11893590). Recommended concentration: 1-3µg/ml.

### Species Reactivity

**Tested:** Human

**Expected from sequence similarity:** Human, Mouse, Dog, Cow



EB09543 (1 $\mu$ g/ml) staining of untreated (first lane) and TGF- $\beta$ 1-treated (second lane) primary cultured Human Lung fibroblast lysate. Primary incubated overnight at 4C. Detected by western blot using chemiluminescence. Data kindly provided by Nickolai Dulin, Dept Medicine/Pulmonary, Chicago, USA.