

## UK Office

### Everest Biotech Ltd

Cherwell Innovation Centre  
77 Heyford Park  
Upper Heyford  
Oxfordshire  
OX25 5HD  
UK

Enquiries:

[info@everestbiotech.com](mailto:info@everestbiotech.com)

Sales:

[sales@everestbiotech.com](mailto:sales@everestbiotech.com)

Tech support:

[support@everestbiotech.com](mailto:support@everestbiotech.com)

Tel: +44 (0)1869 238326

[www.everestbiotech.com](http://www.everestbiotech.com)

**Research Use Only. Not for  
diagnostic or therapeutic use.**

## EB12143 - Goat Anti-SRRT / ARS2 Antibody

Size: 100µg specific antibody in 200µl



### Target Protein

**Principal Names:** SRRT, serrate RNA effector molecule homolog (Arabidopsis), ARS2, ASR2, serrate, arsenate resistance protein 2, arsenate resistance protein ARS2, arsenite resistance protein, arsenite-resistance protein 2, serrate RNA effector molecule homolog

**Official Symbol:** SRRT

**Accession Number(s):** NP\_056992.4; NP\_001122324.1; NP\_001122325.1; NP\_001122326.1

**Human GeneID(s):** [51593](#)

**Non-Human GeneID(s):** 83701 (mouse), 686980 (rat)

**Important Comments:** This antibody is expected to recognize all reported isoform (NP\_056992.4; NP\_001122324.1; NP\_001122325.1; NP\_001122326.1).

### Immunogen

Peptide with sequence C-DPRAIVEYRDL DAPD, from the C Terminus of the protein sequence according to NP\_056992.4; NP\_001122324.1; NP\_001122325.1; NP\_001122326.1.

Please note the [peptide](#) is available for sale.

### Purification and Storage

Purified from goat serum by ammonium sulphate precipitation followed by antigen affinity chromatography using the immunizing peptide.

Supplied at 0.5 mg/ml in Tris saline, 0.02% sodium azide, pH7.3 with 0.5% bovine serum albumin.

Aliquot and store at -20°C. Minimize freezing and thawing.

### Applications Tested

**Peptide ELISA:** antibody detection limit dilution 1:128000.

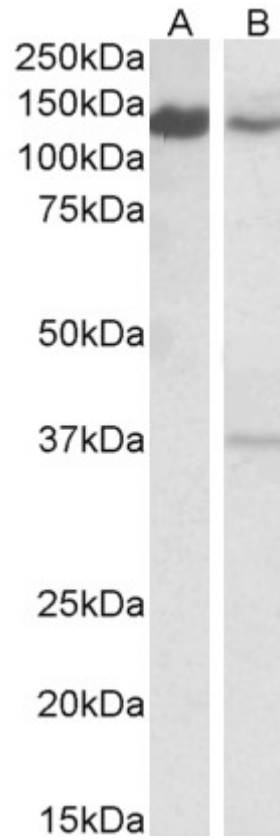
**Western blot:** Approx 140kDa band observed in lysates of cell line Daudi and of Mouse Spleen, and approx 150kDa band observed in lysates of Rat Testis (calculated MW of 101kDa according to Human NP\_056992.4, 100kDa according to Mouse NP\_113582.1 and 88.4kDa according to Rat XP\_006221478.1). The observed molecular weight is explained by the acetylation of the protein and it corresponds to earlier findings from sources. An additional band of unknown identity was also consistently observed at 37kDa in Mouse Spleen. This band was successfully blocked by incubation with the immunizing peptide. Primary incubation was 1 hour.

**IHC:** Paraffin embedded Human Uterus. Recommended concentration: 5µg/ml.

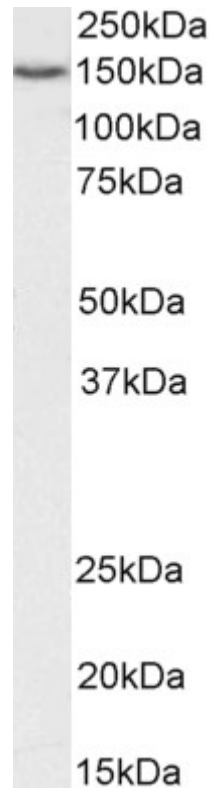
### Species Reactivity

**Tested:** Human, Mouse, Rat

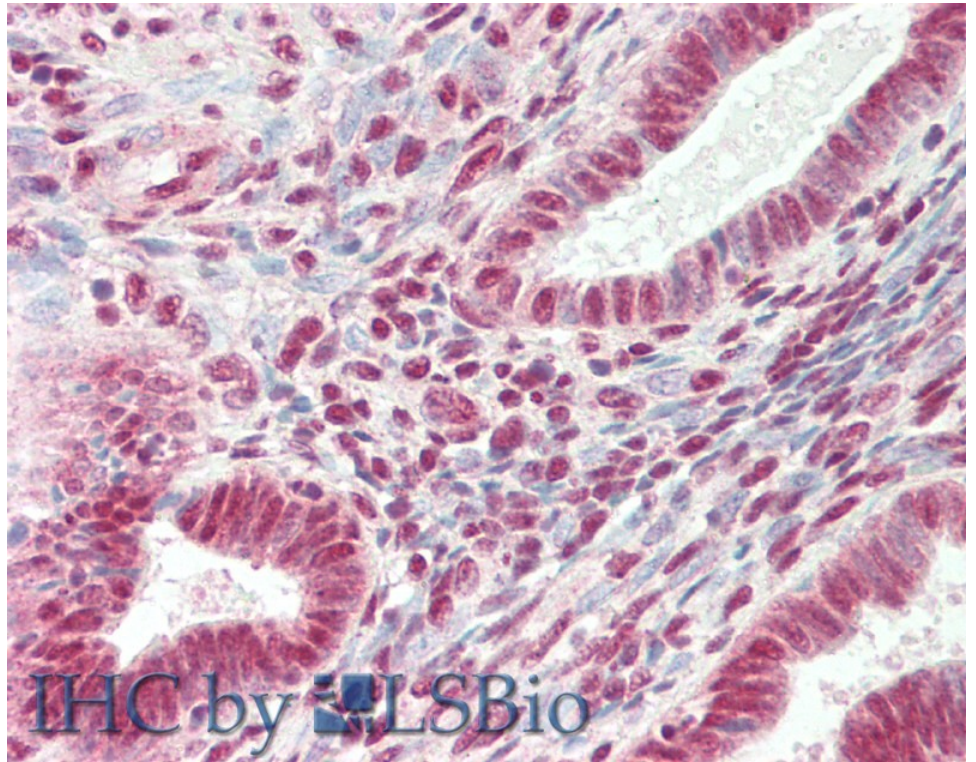
**Expected from sequence similarity:** Human, Mouse, Rat, Dog, Pig, Cow



EB12143 (0.1 $\mu$ g/ml) staining of Daudi (A) and Mouse Spleen (B) lysates (35 $\mu$ g protein in RIPA buffer). Detected by chemiluminescence.



EB12143 (0.1 $\mu$ g/ml) staining of Rat Testis lysate (35 $\mu$ g protein in RIPA buffer). Detected by chemiluminescence.



EB12143 (5µg/ml) staining of paraffin embedded Human Uterus. Steamed antigen retrieval with citrate buffer pH 6, AP-staining.