



## UK Office

### Everest Biotech Ltd

Cherwell Innovation Centre  
77 Heyford Park  
Upper Heyford  
Oxfordshire  
OX25 5HD  
UK

Enquiries:

[info@everestbiotech.com](mailto:info@everestbiotech.com)

Sales:

[sales@everestbiotech.com](mailto:sales@everestbiotech.com)

Tech support:

[support@everestbiotech.com](mailto:support@everestbiotech.com)

Tel: +44 (0)1869 238326

Fax: +44 (0)1869 238327

## US Office

### Everest Biotech c/o Abcore

405 Maple Street, Suite A106  
Ramona,  
CA 92065  
USA

Inquiries:

[info@everestbiotech.com](mailto:info@everestbiotech.com)

Sales:

[usasales@everestbiotech.com](mailto:usasales@everestbiotech.com)

Tech support:

[support@everestbiotech.com](mailto:support@everestbiotech.com)

Tel: 888-320-4628 (toll-free)

Fax: 888-841-9041

[www.everestbiotech.com](http://www.everestbiotech.com)

**Research Use Only. Not for  
diagnostic or therapeutic use.**

## EB05885 - Goat Anti-SSP29 / ANP32B Antibody

Size: 100µg specific antibody in 200µl



### Target Protein

**Principal Names:** ANP32B, SSP29, APRIL, PHAPI2, acidic (leucine-rich) nuclear phosphoprotein 32 family, member B, acidic protein rich in leucines, acidic nuclear phosphoprotein 32 family member B, putative HLA-DR-associated protein I-2, silver-stainable protein SSP29

**Official Symbol:** ANP32B

**Accession Number(s):** NP\_006392.1

**Human GeneID(s):** [10541](#)

**Non-Human GeneID(s):** 67628 (mouse), 170724 (rat)

**Important Comments:** This antibody does NOT recognize the TNF family member also known as APRIL - Gene ID number 8741. However this antibody may cross-react with ANP32A (GeneID 8125).

### Immunogen

Peptide with sequence C-KRKRETDDEGEDD, from the C Terminus of the protein sequence according to NP\_006392.1.

Please note the [peptide](#) is available for sale.

### Purification and Storage

Purified from goat serum by ammonium sulphate precipitation followed by antigen affinity chromatography using the immunizing peptide.

Supplied at 0.5 mg/ml in Tris saline, 0.02% sodium azide, pH7.3 with 0.5% bovine serum albumin.

Aliquot and store at -20°C. Minimize freezing and thawing.

### Applications Tested

**Peptide ELISA:** antibody detection limit dilution 1:16000.

**Western blot:** Approx 28kDa band observed in Human Tonsil lysates, and approx 30kDa band observed in Rat and Pig Spleen lysates and in lysates of cell line NIH3T3 (calculated MW of 28.8kDa according to Human NP\_006392.1, 31.1kDa according to Mouse NP\_570959.1 and to Rat NP\_571986.1 and 29.9kDa according to Pig XP\_013849138.1).

Recommended concentration: 0.1-0.3µg/ml.

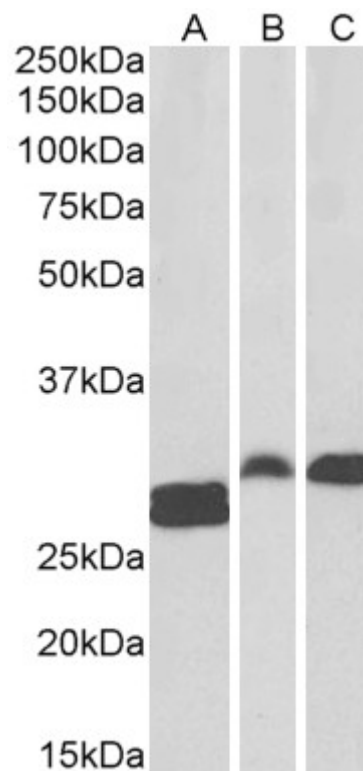
**IHC:** In paraffin embedded Human Breast shows nuclear staining in lobular cells.

Recommended concentration: 3-5µg/ml.

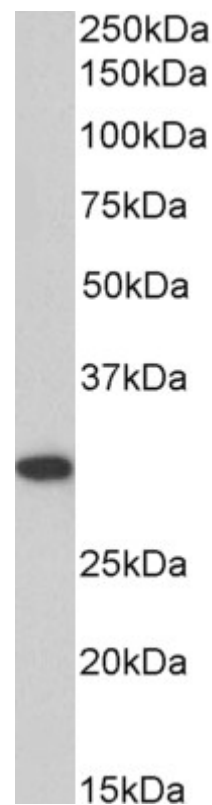
### Species Reactivity

**Tested:** Human, Mouse, Rat, Pig

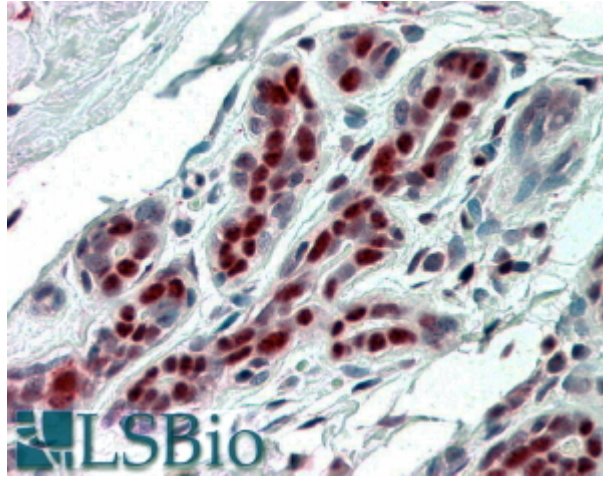
**Expected from sequence similarity:** Human, Mouse, Rat, Dog, Pig, Cow



EB05885 (0.1 $\mu$ g/ml) staining of Human Tonsil (A) and Rat (B) and Pig (C) Spleen lysate (35 $\mu$ g protein in RIPA buffer). Primary incubation was 1 hour. Detected by chemiluminescence.



EB05885 (0.1 $\mu$ g/ml) staining of NIH3T3 cell lysate (35 $\mu$ g protein in RIPA buffer). Primary incubation was 1 hour. Detected by chemiluminescence.



EB05885 (3.8µg/ml) staining of paraffin embedded Human Breast. Steamed antigen retrieval with citrate buffer pH 6, AP-staining.