



## UK Office

### Everest Biotech Ltd

Cherwell Innovation Centre  
77 Heyford Park  
Upper Heyford  
Oxfordshire  
OX25 5HD  
UK

Enquiries:

[info@everestbiotech.com](mailto:info@everestbiotech.com)

Sales:

[sales@everestbiotech.com](mailto:sales@everestbiotech.com)

Tech support:

[support@everestbiotech.com](mailto:support@everestbiotech.com)

Tel: +44 (0)1869 238326

Fax: +44 (0)1869 238327

## US Office

### Everest Biotech c/o Abcore

405 Maple Street, Suite A106  
Ramona,  
CA 92065  
USA

Inquiries:

[info@everestbiotech.com](mailto:info@everestbiotech.com)

Sales:

[usasales@everestbiotech.com](mailto:usasales@everestbiotech.com)

Tech support:

[support@everestbiotech.com](mailto:support@everestbiotech.com)

Tel: 888-320-4628 (toll-free)

Fax: 888-841-9041

[www.everestbiotech.com](http://www.everestbiotech.com)

**Research Use Only. Not for  
diagnostic or therapeutic use.**

## EB07213 - Goat Anti-STAM2 Antibody

Size: 100µg specific antibody in 200µl



### Target Protein

**Principal Names:** STAM2, signal transducing adaptor molecule (SH3 domain and ITAM motif) 2, HGNC:11358, DKFZp564C047, Hbp, STAM2A, STAM2B, STAM-like protein containing SH3 and ITAM domains 2, signal transducing adaptor molecule 2

**Official Symbol:** STAM2

**Accession Number(s):** NP\_005834.3

**Human GeneID(s):** [10254](#)

**Non-Human GeneID(s):** 56324 (mouse)

**Important Comments:** No cross-reaction expected with STAM1.

### Immunogen

Peptide with sequence C-QSIDPTDSKPDSQD, from the internal region of the protein sequence according to NP\_005834.3.

Please note the [peptide](#) is available for sale.

### Purification and Storage

Purified from goat serum by ammonium sulphate precipitation followed by antigen affinity chromatography using the immunizing peptide.

Supplied at 0.5 mg/ml in Tris saline, 0.02% sodium azide, pH7.3 with 0.5% bovine serum albumin.

Aliquot and store at -20°C. Minimize freezing and thawing.

### Applications Tested

**Peptide ELISA:** antibody detection limit dilution 1:8000.

**Western blot:** Approx 70kDa band observed in Human Spleen lysates and in preliminary testing of HeLa cell lysate (calculated MW of 58.2kDa according to NP\_005834.3). This molecular weight is routinely observed by other sources. Recommended concentration: 1-3µg/ml.. Primary incubation 1 hour at room temperature.

**Flow Cytometry:** Flow cytometric analysis of K562 and HeLa cells. Recommended concentration: 10ug/ml.

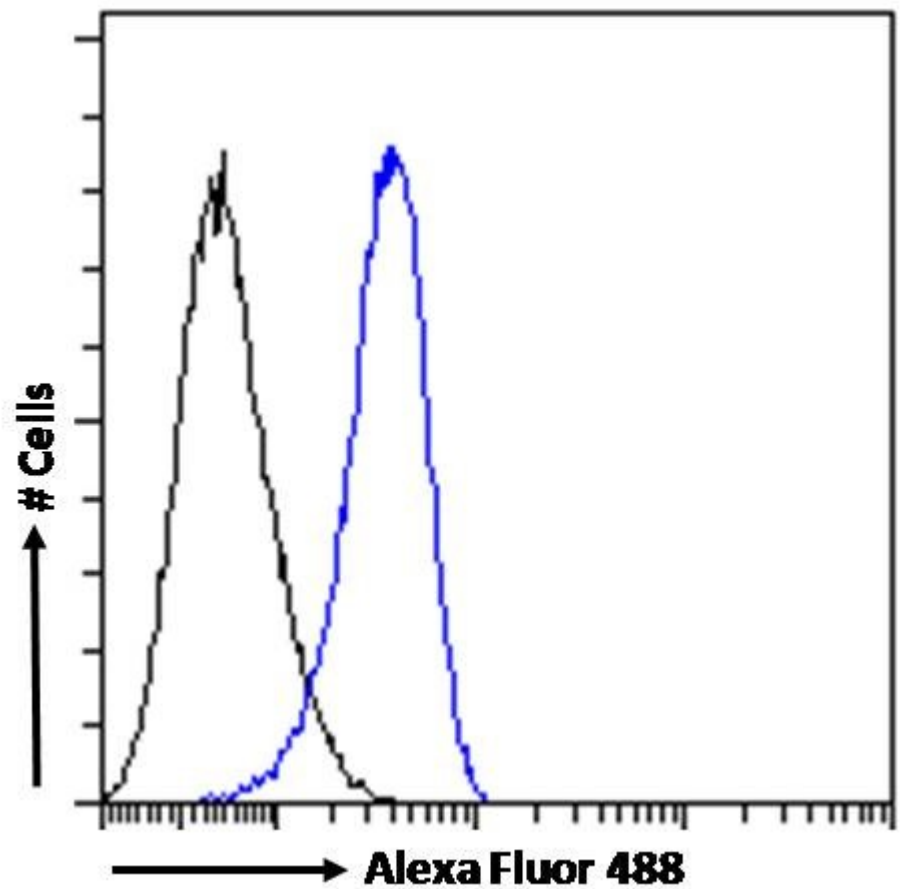
### Species Reactivity

**Tested:** Human

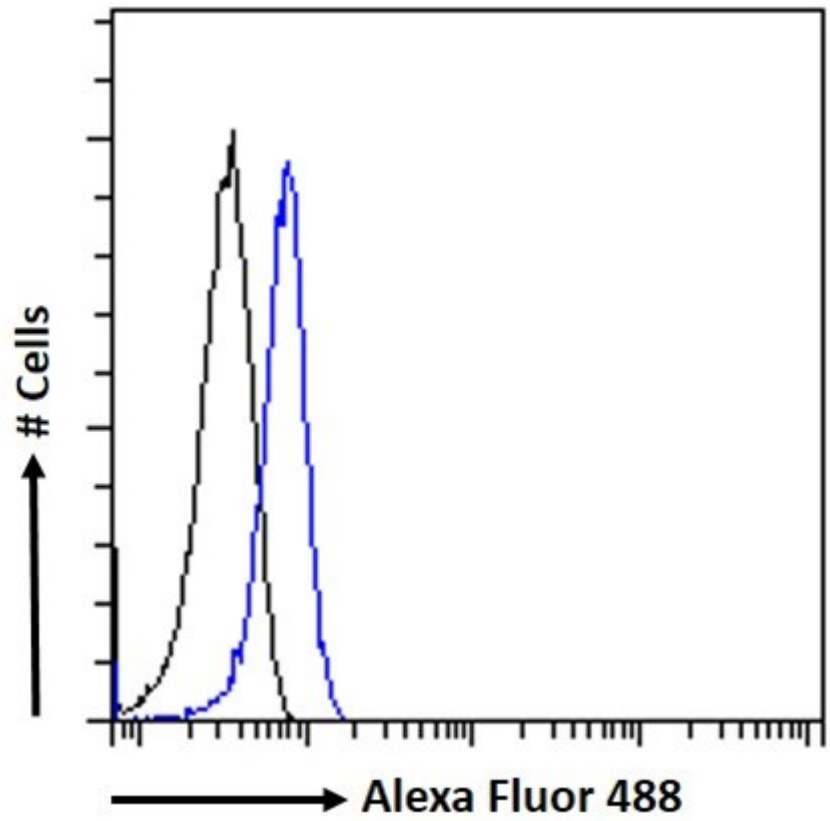
**Expected from sequence similarity:** Human, Mouse, Dog, Cow



EB07213 (1 $\mu$ g/ml) staining of Human Spleen lysate (35 $\mu$ g protein in RIPA buffer). Detected by chemiluminescence.



EB07213 Flow cytometric analysis of paraformaldehyde fixed K562 cells (blue line), permeabilized with 0.5% Triton. Primary incubation 1hr (10 $\mu$ g/ml) followed by Alexa Fluor 488 secondary antibody (1 $\mu$ g/ml). IgG control: Unimmunized goat IgG (black line) followed by Alexa Fluor 488 secondary antibody.



EB07213 Flow cytometric analysis of paraformaldehyde fixed HeLa cells (blue line), permeabilized with 0.5% Triton. Primary incubation 1hr (10ug/ml) followed by Alexa Fluor 488 secondary antibody (1ug/ml). IgG control: Unimmunized goat IgG (black line) followed by Alexa Fluor 488 secondary antibody.