



## UK Office

### Everest Biotech Ltd

Cherwell Innovation Centre  
77 Heyford Park  
Upper Heyford  
Oxfordshire  
OX25 5HD  
UK

Enquiries:

[info@everestbiotech.com](mailto:info@everestbiotech.com)

Sales:

[sales@everestbiotech.com](mailto:sales@everestbiotech.com)

Tech support:

[support@everestbiotech.com](mailto:support@everestbiotech.com)

Tel: +44 (0)1869 238326

[www.everestbiotech.com](http://www.everestbiotech.com)

**Research Use Only. Not for  
diagnostic or therapeutic use.**

## EB09862 - Goat Anti-STAT4 (aa 369-383) Antibody

Size: 100µg specific antibody in 200µl



### Target Protein

**Principal Names:** OTTHUMP00000163553, signal transducer and activator of transcription 4, SLEB11, STAT4

**Official Symbol:** STAT4

**Accession Number(s):** NP\_003142.1

**Human GeneID(s):** [6775](#)

### Immunogen

Peptide with sequence TLSNRRFVLCGTNVK, from the internal region of the protein sequence according to NP\_003142.1.

Please note the [peptide](#) is available for sale.

### Purification and Storage

Purified from goat serum by ammonium sulphate precipitation followed by antigen affinity chromatography using the immunizing peptide.

Supplied at 0.5 mg/ml in Tris saline, 0.02% sodium azide, pH7.3 with 0.5% bovine serum albumin.

Aliquot and store at -20°C. Minimize freezing and thawing.

### Applications Tested

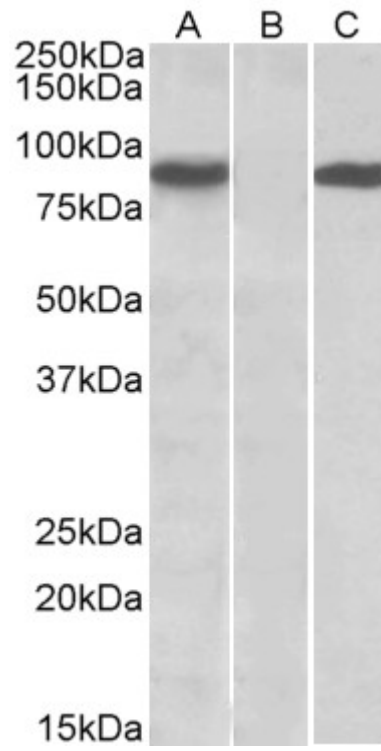
**Peptide ELISA:** antibody detection limit dilution 1:1000.

**Western blot:** In transfected HEK293 transiently expressing full-length Human STAT4 (MYC and DYKDDDDK tagged), a band of approx.85kDa was observed. No bands were observed in mock-transfected HEK293 and the same band was observed using anti-myc tag antibody. Recommended concentration, 0.5-1µg/ml.

### Species Reactivity

**Tested:** Human

**Expected from sequence similarity:** Human



HEK293 lysate (10ug protein in RIPA buffer) overexpressing Human STAT4 (RC206892) with C-terminal MYC tag probed with EB09862 (1ug/ml) in Lane A and probed with anti-MYC Tag (1/1000) in lane C. Mock-transfected HEK293 probed with EB09862 (1mg/ml) in Lane B. Primary incubations were for 1 hour. Detected by chemiluminescence.