



## UK Office

### Everest Biotech Ltd

Cherwell Innovation Centre  
77 Heyford Park  
Upper Heyford  
Oxfordshire  
OX25 5HD  
UK

Enquiries:

[info@everestbiotech.com](mailto:info@everestbiotech.com)

Sales:

[sales@everestbiotech.com](mailto:sales@everestbiotech.com)

Tech support:

[support@everestbiotech.com](mailto:support@everestbiotech.com)

Tel: +44 (0)1869 238326

[www.everestbiotech.com](http://www.everestbiotech.com)

**Research Use Only. Not for  
diagnostic or therapeutic use.**

## EB07980 - Goat Anti-STEAP4 / Dudulin4 Antibody

Size: 100µg specific antibody in 200µl



### Target Protein

**Principal Names:** STEAP family member 4, DKFZp666D049, FLJ23153, STAMP2, TIARP, TNFAIP9, six transmembrane prostate protein 2, tumor necrosis factor, alpha-induced protein 9, tumor necrosis-alpha-induced adipose-related protein

**Official Symbol:** STEAP4

**Accession Number(s):** NP\_078912.2

**Human GeneID(s):** [79689](#)

**Non-Human GeneID(s):** 117167 (mouse)

### Immunogen

Peptide with sequence CVDNLTLRIRQGWERN, from the C Terminus of the protein sequence according to NP\_078912.2.

Please note the [peptide](#) is available for sale.

### Purification and Storage

Purified from goat serum by ammonium sulphate precipitation followed by antigen affinity chromatography using the immunizing peptide.

Supplied at 0.5 mg/ml in Tris saline, 0.02% sodium azide, pH7.3 with 0.5% bovine serum albumin.

Aliquot and store at -20°C. Minimize freezing and thawing.

### Applications Tested

**Peptide ELISA:** antibody detection limit dilution 1:4000.

**Western blot:** Approx. 50-55kDa band observed in Human Adipose lysates (calculated MW of 52.0kDa according to NP\_078912.2). In transfected HEK293 transiently expressing Human Dudulin4 a band of approx. 52kDa is observed. This band is not observed in the non-transfected HEK293. Recommended concentration: 0.3-1µg/ml.

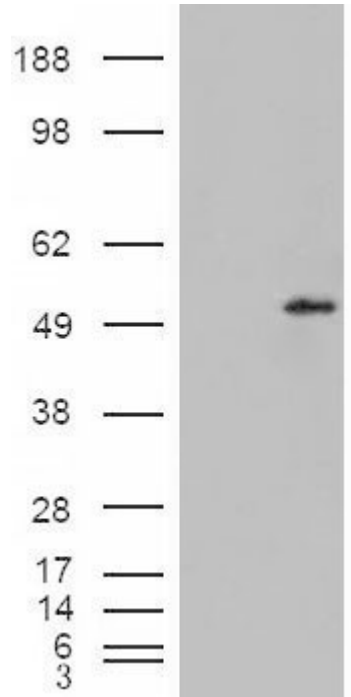
### Species Reactivity

**Tested:** Human

**Expected from sequence similarity:** Human, Mouse, Rat, Dog



EB07980 (0.3µg/ml) staining of Human Adipose lysate (35µg protein in RIPA buffer). Primary incubation was 1 hour. Detected by chemiluminescence.



HEK293 overexpressing Dudulin4 (RC216917) and probed with EB07980 (mock transfection in first lane), tested by Origene.