



## UK Office

### Everest Biotech Ltd

Cherwell Innovation Centre  
77 Heyford Park  
Upper Heyford  
Oxfordshire  
OX25 5HD  
UK

Enquiries:

[info@everestbiotech.com](mailto:info@everestbiotech.com)

Sales:

[sales@everestbiotech.com](mailto:sales@everestbiotech.com)

Tech support:

[support@everestbiotech.com](mailto:support@everestbiotech.com)

Tel: +44 (0)1869 238326

Fax: +44 (0)1869 238327

## US Office

### Everest Biotech c/o Abcore

405 Maple Street, Suite A106  
Ramona,  
CA 92065  
USA

Inquiries:

[info@everestbiotech.com](mailto:info@everestbiotech.com)

Sales:

[usasales@everestbiotech.com](mailto:usasales@everestbiotech.com)

Tech support:

[support@everestbiotech.com](mailto:support@everestbiotech.com)

Tel: 888-320-4628 (toll-free)

Fax: 888-841-9041

[www.everestbiotech.com](http://www.everestbiotech.com)

**Research Use Only. Not for  
diagnostic or therapeutic use.**

## EB07108 - Goat Anti-Stearoyl-CoA desaturase Antibody

Size: 100µg specific antibody in 200µl



### Target Protein

**Principal Names:** SCD, SCD1, HGNC:10571, FADS5, PRO0998, acyl-CoA desaturase, delta-9-desaturase, fatty acid desaturase, predicted protein of HQ0998, stearoyl-CoA desaturase

**Official Symbol:** SCD

**Accession Number(s):** NP\_005054.3

**Human GeneID(s):** [6319](#)

### Immunogen

Peptide with sequence C-RIKRTGDGNYKSG, from the C Terminus of the protein sequence according to NP\_005054.3.

Please note the [peptide](#) is available for sale.

### Purification and Storage

Purified from goat serum by ammonium sulphate precipitation followed by antigen affinity chromatography using the immunizing peptide.

Supplied at 0.5 mg/ml in Tris saline, 0.02% sodium azide, pH7.3 with 0.5% bovine serum albumin.

Aliquot and store at -20°C. Minimize freezing and thawing.

### Applications Tested

**Peptide ELISA:** antibody detection limit dilution 1:64000.

**Western blot:** Preliminary experiments gave an approx 30kDa band in Human Adipose, Brain and Liver lysates after 0.3 µg/ml antibody staining. Please note that currently we cannot find an explanation in the literature for the band we observe given the calculated size of 41.5kDa according to NP\_005054.3. The 30kDa band was successfully blocked by incubation with the immunizing peptide.

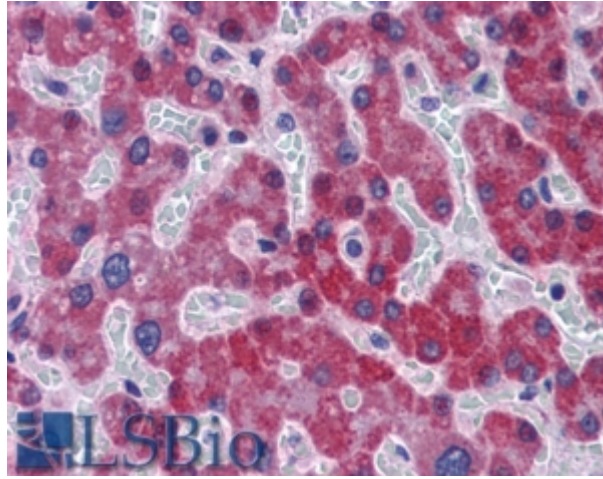
**IHC:** Paraffin embedded Human Liver and Colon. Recommended concentration: 5µg/ml.

**Flow Cytometry:** Exclusively staining of HepG2 when mixed with Peripheral Blood Lymphocytes.

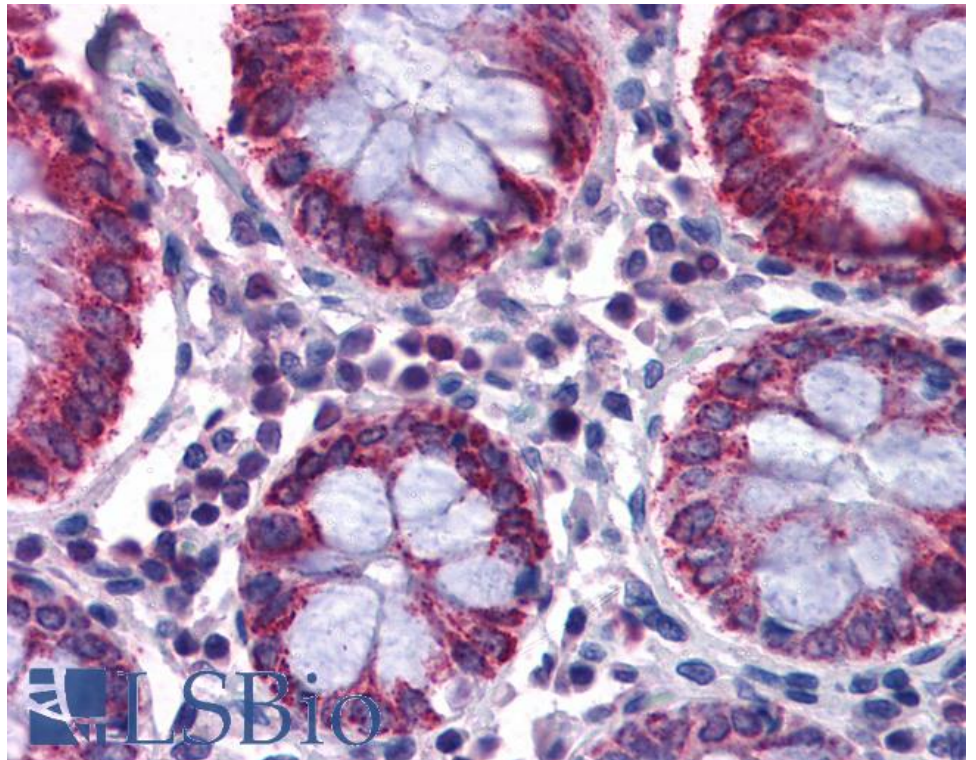
### Species Reactivity

**Tested:** Human

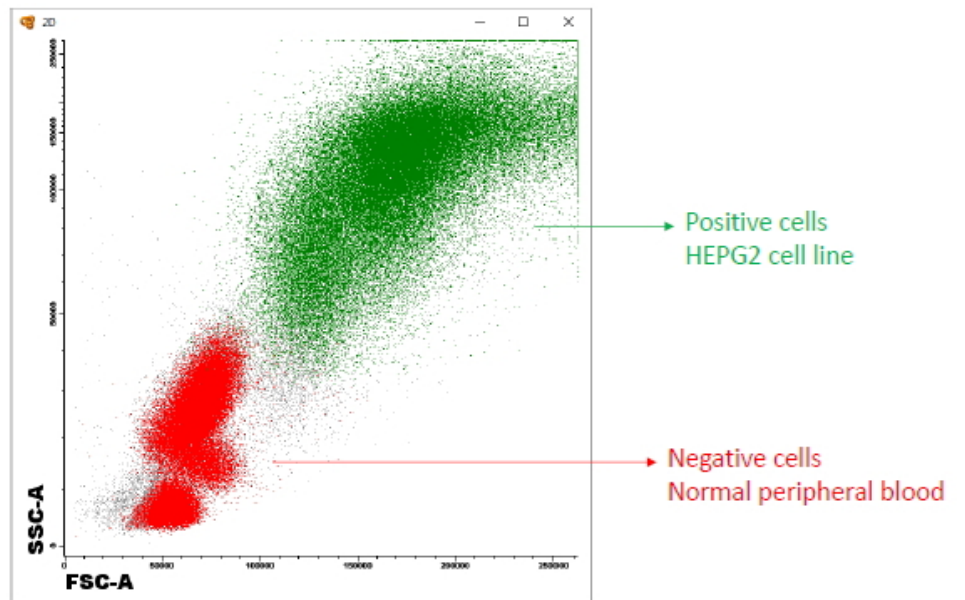
**Expected from sequence similarity:** Human



EB07108 (5µg/ml) staining of paraffin embedded Human Liver. Steamed antigen retrieval with citrate buffer pH 6, AP-staining.



EB07108 (5µg/ml) staining of paraffin embedded Human Colon. Steamed antigen retrieval with citrate buffer pH 6, AP-staining.



EB07108 (2.5ul) staining of HepG2 cells mixed in with PBL. Detected by fluorescence with PE for SCD in green and with OC515 for CD45 (CYT-450C) in red.