



UK Office

Everest Biotech Ltd

Cherwell Innovation Centre
77 Heyford Park
Upper Heyford
Oxfordshire
OX25 5HD
UK

Enquiries:

info@everestbiotech.com

Sales:

sales@everestbiotech.com

Tech support:

support@everestbiotech.com

Tel: +44 (0)1869 238326

Fax: +44 (0)1869 238327

US Office

Everest Biotech c/o Abcore

405 Maple Street, Suite A106
Ramona,
CA 92065
USA

Inquiries:

info@everestbiotech.com

Sales:

usasales@everestbiotech.com

Tech support:

support@everestbiotech.com

Tel: 888-320-4628 (toll-free)

Fax: 888-841-9041

www.everestbiotech.com

**Research Use Only. Not for
diagnostic or therapeutic use.**

EB07115 - Goat Anti-STMN1 / Stathmin 1 Antibody

Size: 100µg specific antibody in 200µl



Target Protein

Principal Names: STMN1, stathmin 1/oncoprotein 18, LAP18, Lag, OP18, PP17, PP19, PR22, SMN, Pr22 protein, leukemia-associated phosphoprotein p18, metastasin, oncoprotein 18, phosphoprotein 19, prosolin, stathmin 1, stathmin 1 variant

Official Symbol: STMN1

Accession Number(s): NP_005554.1; NP_981944.1; NP_981946.1

Human GeneID(s): [3925](#)

Important Comments: This antibody is expected to cross-react with isoform 1 a (NP_005554.1; NP_981944.1; NP_981946.1) only. The three reported isoforms (NP_005554.1, NP_981944.1 and NP_981946.1) represent identical protein.

Immunogen

Peptide with sequence C-KNKESKDPADETEAD, from the C Terminus of the protein sequence according to NP_005554.1; NP_981944.1; NP_981946.1.

Please note the [peptide](#) is available for sale.

Purification and Storage

Purified from goat serum by ammonium sulphate precipitation followed by antigen affinity chromatography using the immunizing peptide.

Supplied at 0.5 mg/ml in Tris saline, 0.02% sodium azide, pH7.3 with 0.5% bovine serum albumin.

Aliquot and store at -20°C. Minimize freezing and thawing.

Applications Tested

Peptide ELISA: antibody detection limit dilution 1:1000.

Western blot: Approx 17kDa band observed in Human Testis and Mouse Brain lysates (calculated MW of 17.3kDa according to NP_005554.1, NP_981944.1 and NP_981946.1). Recommended concentration: 1-3µg/ml.

IHC: Paraffin embedded Human Thymus and Tonsil. Recommended concentration: 3.75µg/ml.

ELISA: This antibody has been successfully used in ELISA as described in the following paper: Song et al, Aging Cell. 2010 Aug;9(4):607-15; PMID: 20560902.

Species Reactivity

Tested: Human, Mouse

Expected from sequence similarity: Human, Mouse, Rat

Specific References

This antibody has been successfully used in the following paper:

Watabe-Rudolph M, Song Z, Lausser L, Schnack C, Begus-Nahrmann Y, Scheithauer MO, Rettinger G, Otto M, Tumani H, Thal DR, Attems J, Jellinger KA, Kestler HA, von Arnim CA, Rudolph KL.

Chitinase enzyme activity in CSF is a powerful biomarker of Alzheimer disease. Neurology. 2012 Feb 21;78(8):569-77.

PMID: 22323746

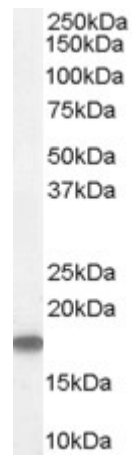
This antibody has been successfully used in ELISA:

Song Z, von Figura G, Liu Y, Kraus JM, Torrice C, Dillon P, Rudolph-Watabe M, Ju Z, Kestler HA, Sanoff H, Lenhard Rudolph K.

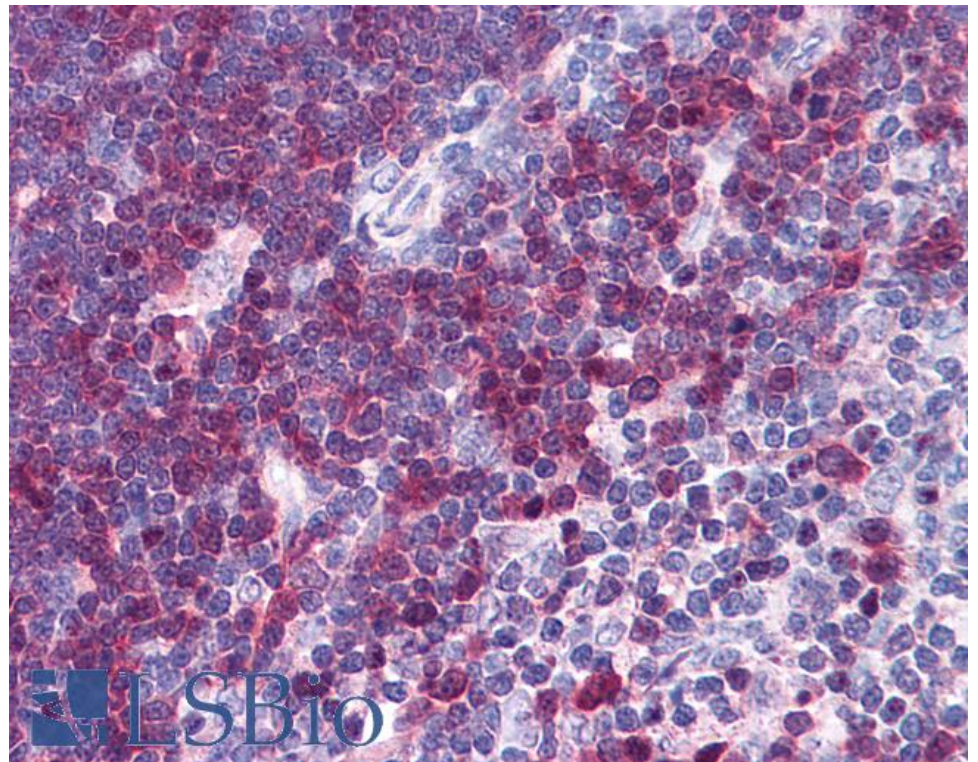
Lifestyle impacts on the aging-associated expression of biomarkers of DNA damage and telomere dysfunction in human blood.

Aging Cell. 2010 Aug;9(4):607-15.

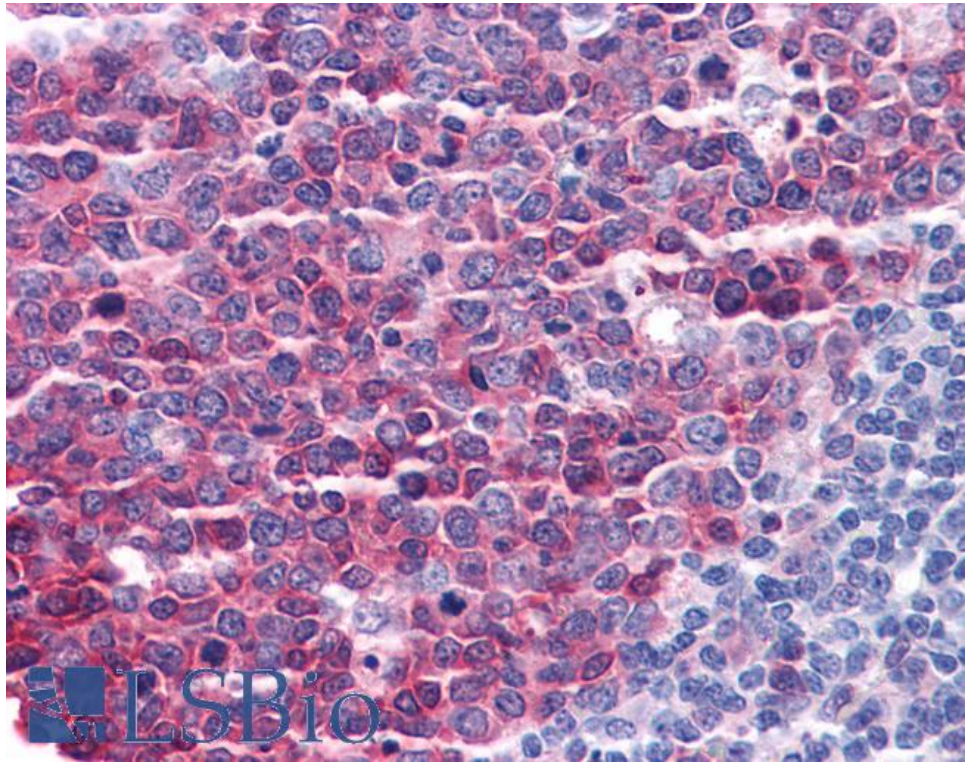
PMID: 20560902



EB07115 (1 μ g/ml) staining of Human Testis Lysate (35 μ g protein in RIPA buffer). Primary incubation was 1 hour.
Detected by chemiluminescence.



EB07115 (3.75 μ g/ml) staining of paraffin embedded Human Thymus. Steamed antigen retrieval with citrate buffer pH 6, AP-staining.



EB07115 (3.75µg/ml) staining of paraffin embedded Human Tonsil. Steamed antigen retrieval with citrate buffer pH 6, AP-staining.